

WAAS CH <b>82338</b> <b>W17A</b>	APP CRS <b>169°</b>	Rwy Idg TDZE Apt Elev	<b>9597</b> <b>4219</b> <b>4227</b>
--	------------------------	-----------------------------	---

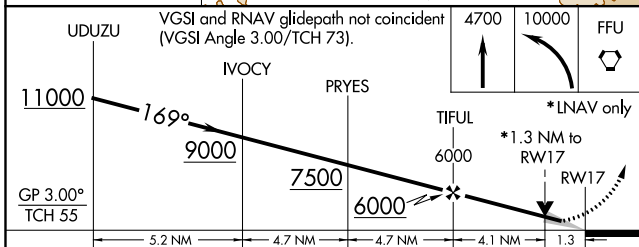
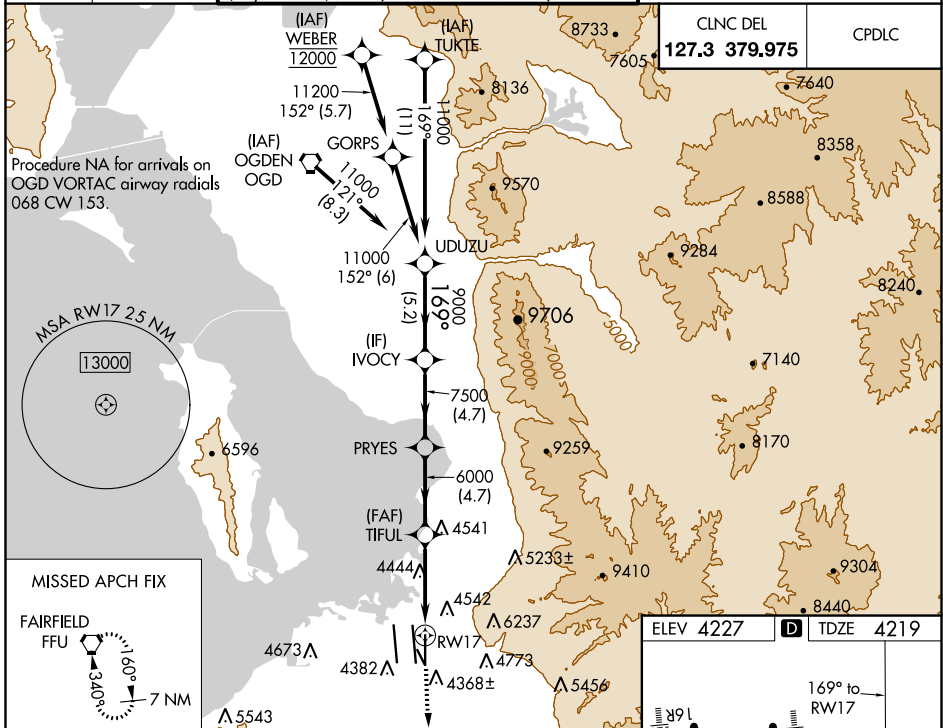
# RNAV (GPS) RWY 17

SALT LAKE CITY INTL (SLC)

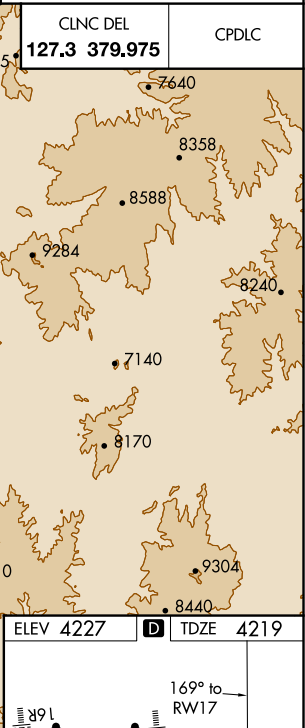
▼ For uncompensated Baro-VNAV systems, LNAV/VNAV NA below -14°C (7°F) or above 49°C (121°F). DME/DME RNP-0.3 NA. For inop ALS, increase LPV Cat E visibility to RVR 4000, LNAV/VNAV Cat E visibility to RVR 6000, and LNAV Cat C/D/E visibility to 1½ SM. Simultaneous approach authorized. LNAV procedure NA during simultaneous operations. Use of FD or AP providing RNAV track guidance required during simultaneous operations.

MALSR 	MISSED APPROACH: Climb to 4700 then climbing left turn to 10000 direct FFU VORTAC and hold.
-----------	--

D-ATIS <b>124.75</b> <b>125.625</b>	SALT LAKE CITY APP CON <b>125.7 284.6</b>	SALT LAKE CITY TOWER <b>119.05 257.8 118.3 257.8 132.65 336.4</b> (Rwy 16L-34R) (Rwys 14-32, 17-35) (Rwy 16R-34L)			GND CON <b>121.9 348.6 123.775 348.6</b> (Rwys 14-32, 17-35) (Rwys 16L-34R, 16R-34L)
---	---	---	--	--	--



CATEGORY	A	B	C	D	E
LPV DA	4419/18		200 (200-½)		
LNAV/VNAV DA	4571/30		352 (400-¾)		
LNAV MDA	4700/24	481 (500-½)	4700/50	481 (500-1)	



SW-4, 25 FEB 2021 to 25 MAR 2021

SW-4, 25 FEB 2021 to 25 MAR 2021