

WAAS CH 49230 W34A	APP CRS 344°	Rwy ldg TDZE Apt Elev	12002 4222 4227
--	------------------------	-----------------------------	--

RNAV (GPS) RWY 34R

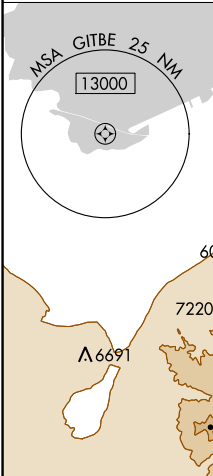
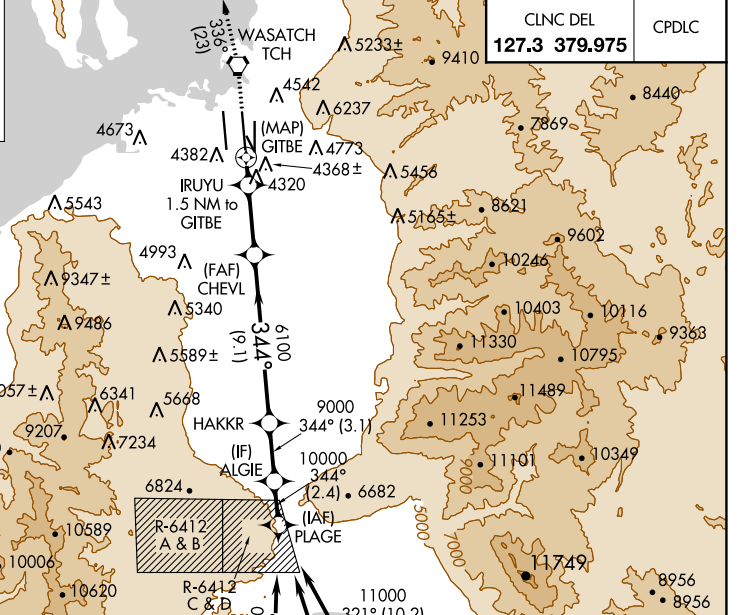
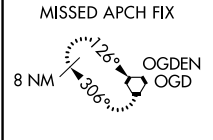
SALT LAKE CITY INTL (SLC)

∇ Simultaneous approach authorized. DME/DME RNP-0.3 NA. Use of FD or AP providing RNAV track guidance required during simultaneous operations. LNAV procedure NA during simultaneous operations. For uncompensated Baro-VNAV systems, LNAV/VNAV NA below -17°C (1°F) or above 49°C (121°F). For inop ALS, increase LPV Cat E visibility to 3/4, LNAV/VNAV Cat E visibility to 1 3/4 and LNAV Cats C/D/E to 1 3/8 SM.

ALSF-2
A

MISSED APPROACH:
Climb to 9000 direct TCH VORTAC and on track 336° to OGD VORTAC and hold.

D-ATIS 124.75	SALT LAKE CITY APP CON 125.625 125.7 284.6	SALT LAKE CITY TOWER 119.05 257.8 118.3 257.8 132.65 336.4 (Rwy 16L-34R) (Rwys 14-32, 17-35) (Rwy 16R-34L)			GND CON 121.9 348.6 123.775 348.6 (Rwys 14-32, 17-35) (Rwy 16L-34R, 16R-34L)	
-------------------------	--	---	--	--	---	--

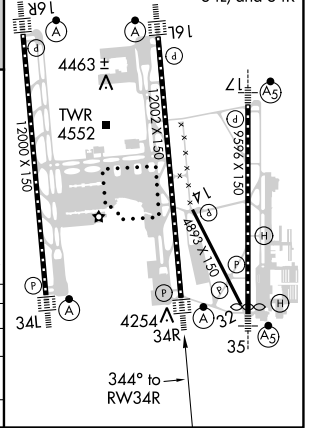
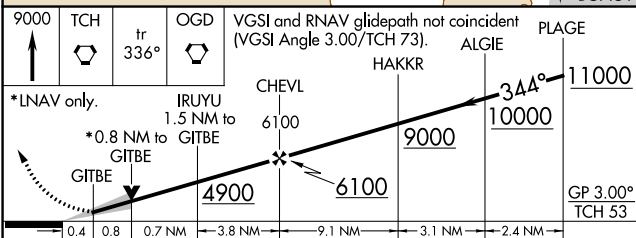


CLNC DEL 127.3 379.975	CPDLC
----------------------------------	-------



ELEV 4227	D	TDZE 4222
-----------	----------	-----------

HIRL all Rwys
TDZ/CL Rwys 16L, 16R, 17, 35, 34L, and 34R



CATEGORY	A	B	C	D	E
LPV DA	4422/18		200 (200-1/2)		
LNAV/VNAV DA	4735/60		513 (600-1 1/4)		
LNAV MDA	4700/24	478 (500-1/2)	4700/50		478 (500-1)

SW-4, 25 FEB 2021 to 25 MAR 2021

SW-4, 25 FEB 2021 to 25 MAR 2021