

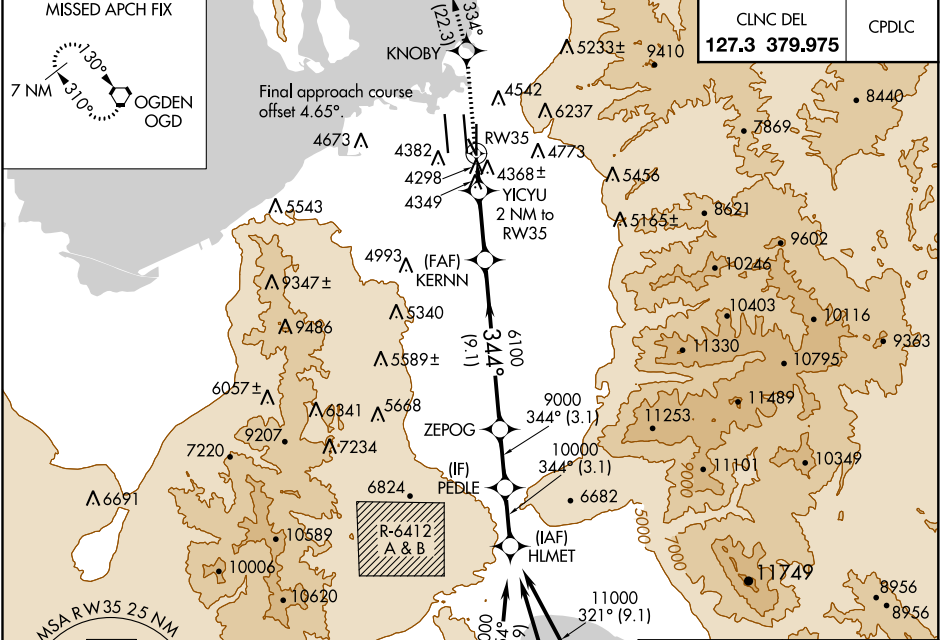
WAAS CH 77722 W35A	APP CRS 344°	Rwy Idg TDZE Apt Elev	9273 4224 4227
--	------------------------	-----------------------------	---

RNAV (GPS) RWY 35

SALT LAKE CITY INTL (SLC)

	DME/DME RNP-0.3 NA. For inop ALS, increase LP Cat E to RVR 5000, increase LNAV Cat E to 1/2 SM.		MISSED APPROACH: Climb to 9000 direct KNOBY and on track 334° to OGD VORTAC and hold.

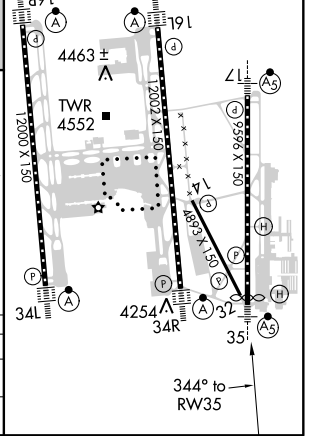
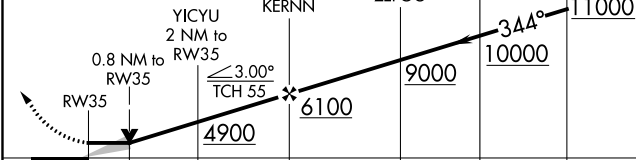
D-ATIS 124.75	SALT LAKE CITY APP CON 125.7 284.6	SALT LAKE CITY TOWER			GND CON		
		119.05 257.8 (Rwy 16L-34R)	118.3 257.8 (Rwys 14-32, 17-35)	132.65 336.4 (Rwy 16R-34L)	121.9 348.6 (Rwys 14-32, 17-35)	123.775 348.6 (Rwys 16L-34R, 16R-34L)	



ELEV 4227	D	TDZE 4224
-----------	----------	-----------

HIRL all Rwys
TDZ/CL Rwys 16L, 16R, 17, 35,
34L, and 34R

9000	KNOBY	OGD	VGSI and descent angles not coincident (VGSI Angle 3.00/TCH 74).
		tr 334°	



CATEGORY	A	B	C	D	E
LP MDA	4560/24	336 (400-1/2)	4560/26	336 (400-1/2)	
LNAV MDA	4760/24	536 (600-1/2)	4760/55	536 (600-1)	

SW-4, 25 FEB 2021 to 25 MAR 2021

SW-4, 25 FEB 2021 to 25 MAR 2021