

SW-4, 25 FEB 2021 to 25 MAR 2021

D-ATIS 124.75 125.625  
 CLNC DEL 127.3 379.975  
 CPDLC  
 GND CON 121.9 348.6 (Rwys 14-32, 17-35)  
 SALT LAKE CITY TOWER 123.775 348.6 (Rwys 16L-34R, 16R-34L)  
 119.05 257.8 (Rwy 16L-34R)  
 118.3 257.8 (Rwys 14-32, 17-35)  
 132.65 336.4 (Rwy 16R-34L)  
 SALT LAKE CITY DEP CON 135.5 316.15

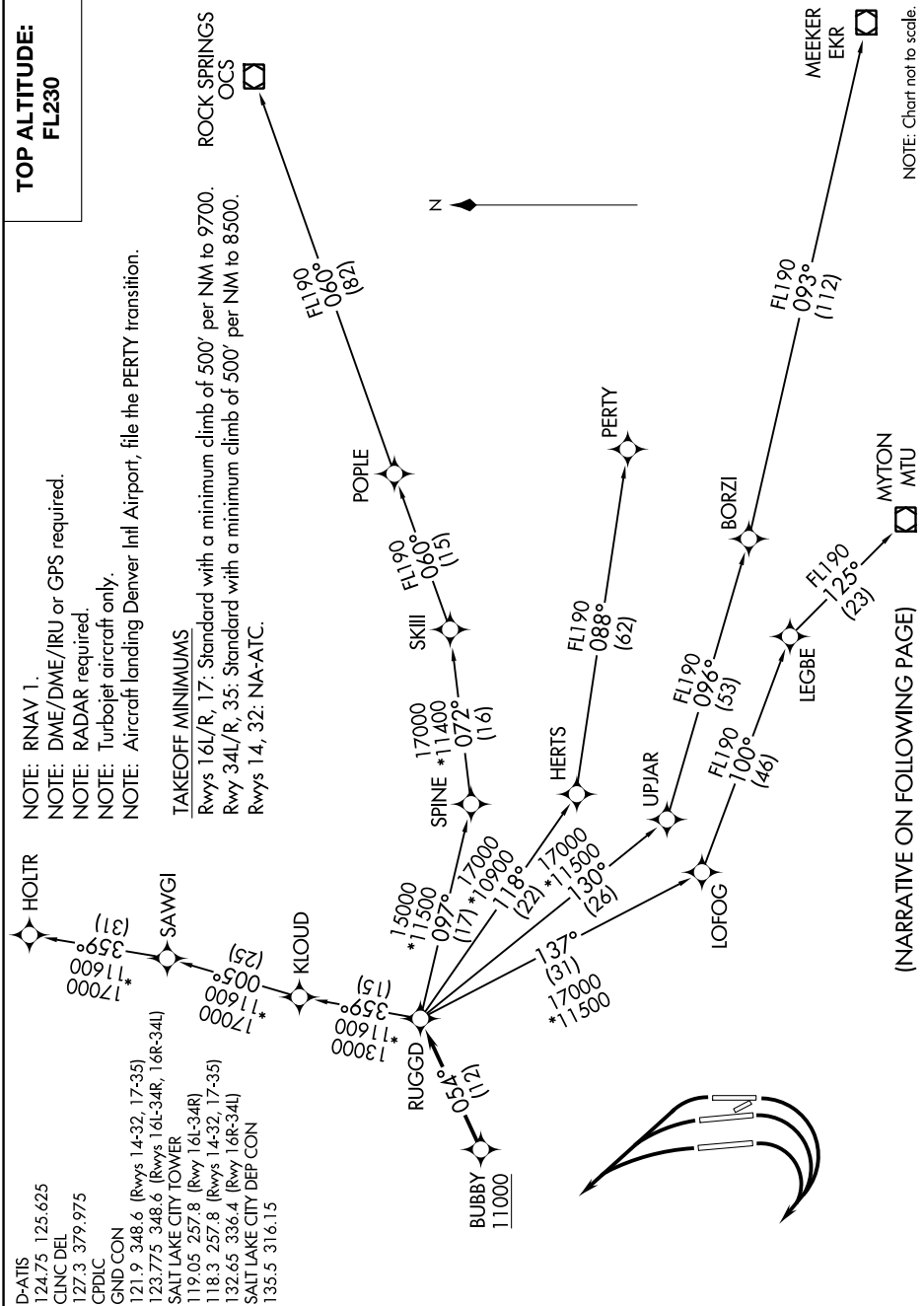
HOLTR  
 SAWGI  
 KLOUD  
 RUGGD  
 BUBBY

NOTE: RNAV 1.  
 NOTE: DME/DME/IRU or GPS required.  
 NOTE: RADAR required.  
 NOTE: Turbojet aircraft only.  
 NOTE: Aircraft landing Denver Intl Airport, file the PERTY transition.

TAKEOFF MINIMUMS

Rwys 16L/R, 17: Standard with a minimum climb of 500' per NM to 9700.  
 Rwy 34L/R, 35: Standard with a minimum climb of 500' per NM to 8500.  
 Rwys 14, 32: NA-ATC.

TOP ALTITUDE:  
FL230



NOTE: Chart not to scale.

(NARRATIVE ON FOLLOWING PAGE)

SW-4, 25 FEB 2021 to 25 MAR 2021