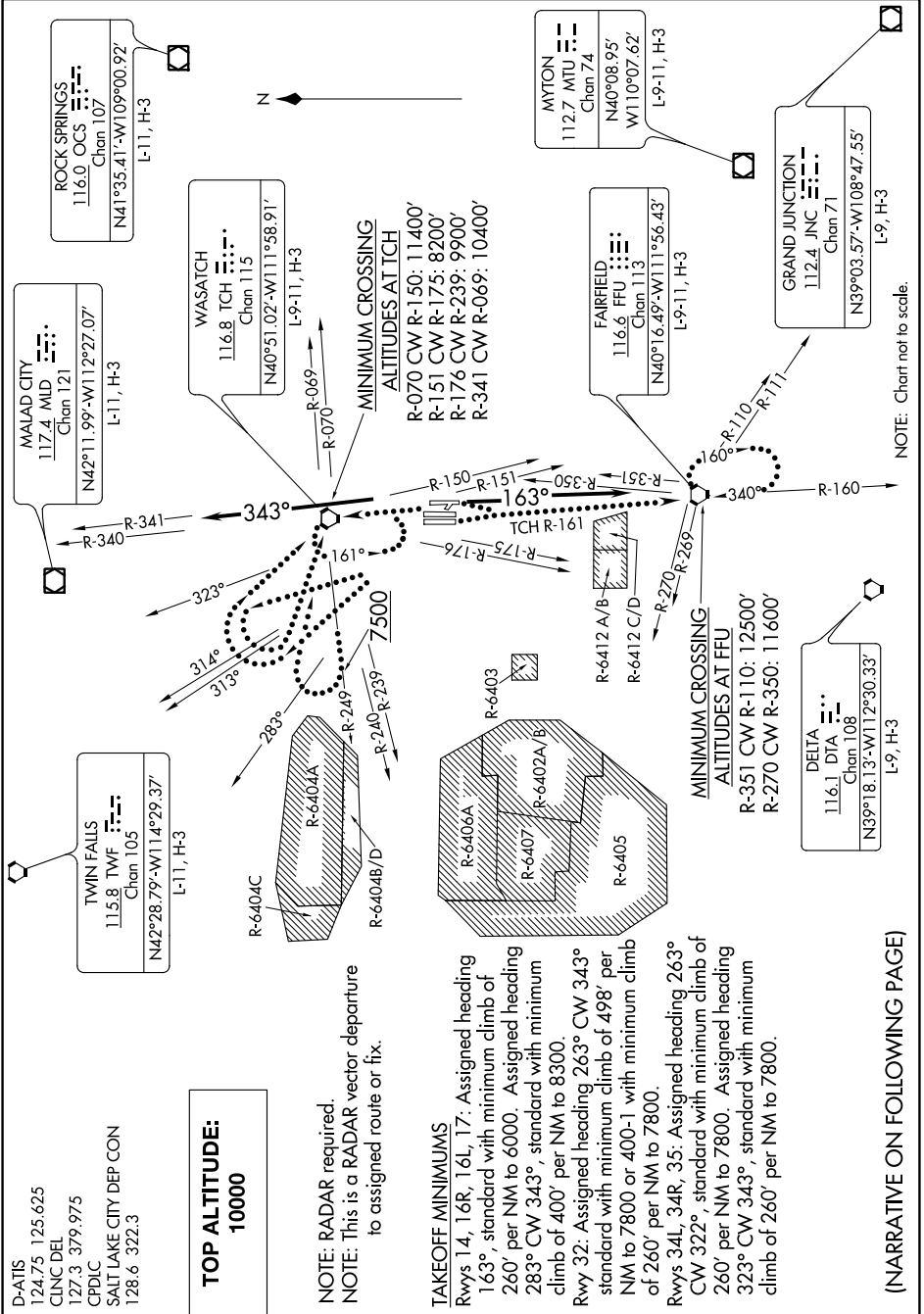


SW-4, 25 FEB 2021 to 25 MAR 2021



NOTE: Chart not to scale.

SW-4, 25 FEB 2021 to 25 MAR 2021

(NARRATIVE ON FOLLOWING PAGE)

TAKEOFF MINIMUMS

Rwys 14, 16R, 16L, 17: Assigned heading 163°, standard with minimum climb of 260' per NM to 6000. Assigned heading 283° CW 343°, standard with minimum climb of 400' per NM to 8300.

Rwy 32: Assigned heading 263° CW 343° standard with minimum climb of 498' per NM to 7800 or 400-1 with minimum climb of 260' per NM to 7800.

Rwys 34L, 34R, 35: Assigned heading 263° CW 322°, standard with minimum climb of 260' per NM to 7800. Assigned heading 323° CW 343°, standard with minimum climb of 260' per NM to 7800.

**TOP ALTITUDE:
10000**

NOTE: RADAR required.
NOTE: This is a RADAR vector departure to assigned route or fix.