

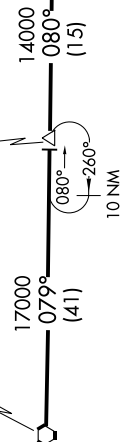
SW-4, 25 FEB 2021 to 25 MAR 2021

SALT LAKE CITY APP CON
128.1 307.05
D-ATIS
124.75 125.625



BONNEVILLE
BVL

KNOLE
Expect 17000



NOTE: Chart not to scale.

ARRIVAL ROUTE DESCRIPTION

From BVL VORTAC on track 079° to KNOLE, then on track 080° to WAATS.

LANDING NORTH RUNWAYS 34L/R and 35: From WAATS on track 067° to RAAACE, thence as depicted to CEEDR, then on heading 164° . Expect RADAR vectors to final approach course.

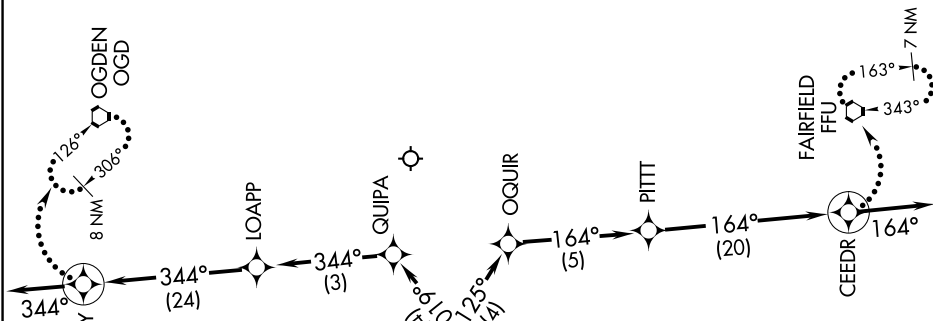
LANDING SOUTH RUNWAYS 16L/R and 17: From WAATS on track 081° to DUGGY, thence as depicted to RROYY, then on heading 344° . Expect RADAR vectors to final approach course.

LOST COMMUNICATIONS

LANDING NORTH: At CEEDR, turn left direct to FFU VORTAC and hold. Maintain 12000.

LANDING SOUTH: At RROYY, turn right direct to OGD VORTAC and hold. Maintain 12000.

- NOTE: RADAR required.
- NOTE: RNAV 1.
- NOTE: DME/DME/IRU or GPS required.
- NOTE: Turboprop aircraft only.
- NOTE: For non-GPS equipped aircraft LCU, TCH and OGD DMEs must be operational.



SW-4, 25 FEB 2021 to 25 MAR 2021