

# ILS or LOC Z RWY 31

MCNARY FIELD (SLE)

LOC/DME I-SLE <b>110.3</b> Chan <b>40</b>	APP CRS <b>313°</b>	Rwy Idg <b>5811</b> TDZE <b>214</b> Apt Elev <b>214</b>
---	------------------------	---

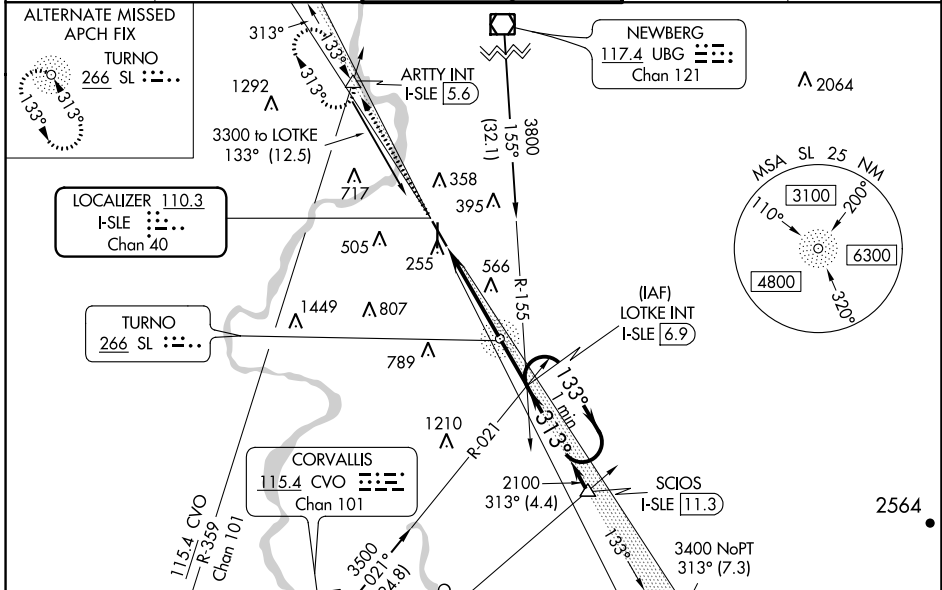
RADAR required for procedure entry at ARTTY.

**▼** When local altimeter setting not received, use Mc Minnville altimeter setting: increase DA to 463 feet, and all MDA 60 feet; increase S-LOC 31 Cats C/D visibility to 2 SM and Circling Cat A visibility to 1½ SM. VDP NA when using Mc Minnville altimeter setting. For inop ALS, increase S-LOC 31 Cat C/D visibility to 2½ SM. # RVR 1800 authorized with the use of FD or AP or HUD to DA, NA when using Mc Minnville altimeter setting.

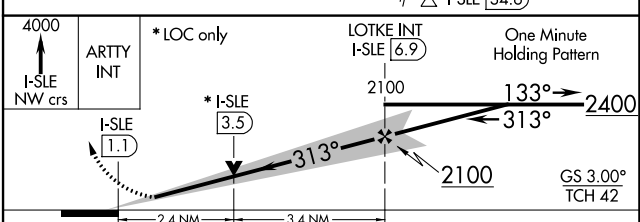
MALSR

MISSED APPROACH: Climb to 4000 on I-SLE Localizer NW course to ARTTY INT/I-SLE 5.6 DME and hold, continue climb-in-hold to 4000.

ATIS <b>124.55</b>	SEATTLE CENTER <b>125.8 291.7</b>	SALEM TOWER ★ <b>119.1</b> (CTAF) <b>0 257.2</b>	GND CON <b>121.9</b>	UNICOM <b>122.95</b>
-----------------------	--------------------------------------	---	-------------------------	-------------------------



ELEV 214	<b>D</b> TDZE 214
REIL Rwy 13, 16 and 34	MIRL Rwy 16-34
HIRL Rwy 13-31	



FAF to MAP 5.8 NM	313° 5.8 NM from FAF				
Knots	60	90	120	150	180
Min:Sec	5:48	3:52	2:54	2:19	1:56

CATEGORY	A	B	C	D
S-ILS 31 #	414/24 200 (200-½)			
S-LOC 31	1020/24 806 (900-½)	1020/40 806 (900-¾)	1020-1⅞ 806 (900-1⅞)	806 (900-1⅞)
CIRCLING	1020-1 806 (900-1)	1020-1¼ 806 (900-1¼)	1060-2½ 846 (900-2½)	1260-3 1046 (1100-3)

NW-1, 25 FEB 2021 to 25 MAR 2021

NW-1, 25 FEB 2021 to 25 MAR 2021