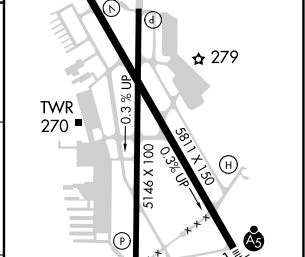
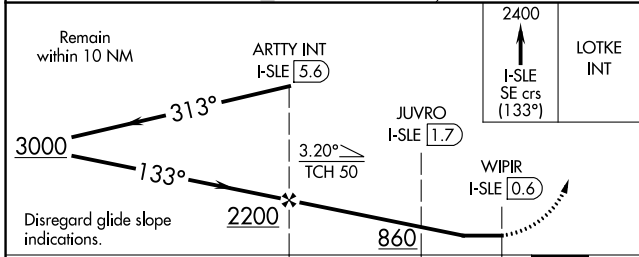
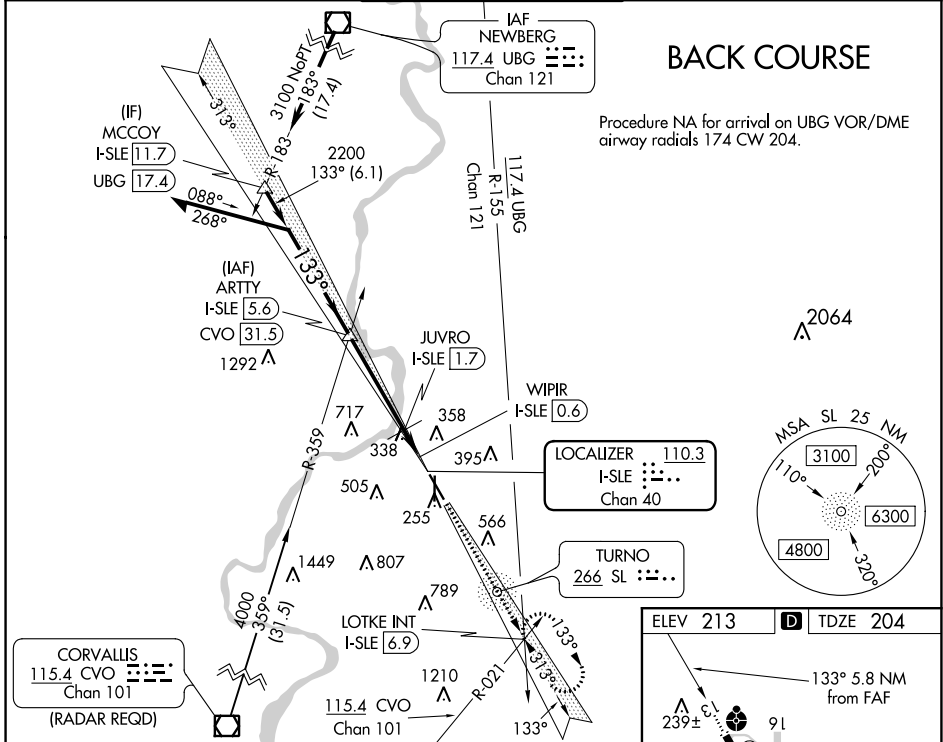


LOC/DME I-SLE 110.3 Chan 40	APP CRS 133°	Rwy Idg TDZE Apt Elev	5811 204 213
------------------------------------------	------------------------	-----------------------------	-----------------------------------------

LOC BC RWY 13

MCNARY FIELD (SLE)

DME required.		SALEM TOWER ★ 119.1 (CTAF) 0 257.2	GND CON 121.9	UNICOM 122.95
<p>▼ When local altimeter setting not received, use Mc Minnville altimeter setting and increase all MDAs 60 feet and visibility S-LOC 13 Cat C/D 1/2 SM and Circling Cat C 1/4 SM. For inop ALS when using Mc Minnville altimeter setting, increase S-LOC 13 Cats C and D visibility to 1 3/8 SM. Rwy 13 helicopter visibility reduction below 3/4 SM NA.</p>		ODALS	<p>MISSED APPROACH: Climb to 2400 on I-SLE Localizer SE course (133°) to LOTKE INT/ I-SLE 6.9 DME and hold.</p>	
ATIS 124.55	SEATTLE CENTER 125.8 291.7			



CATEGORY	A	B	C	D
S-LOC 13	600-3/4	396 (400-3/4)	600-1	396 (400-1)
CIRCLING	900-1 687 (700-1)	960-1 747 (800-1)	1060-2 1/2 847 (900-2 1/2)	1260-3 1047 (1100-3)

REIL Rwsy 13, 16 and 34 269± A

HIRL Rwy 13-31 0

MIRL Rwy 16-34 0

NW-1, 25 FEB 2021 to 25 MAR 2021

NW-1, 25 FEB 2021 to 25 MAR 2021