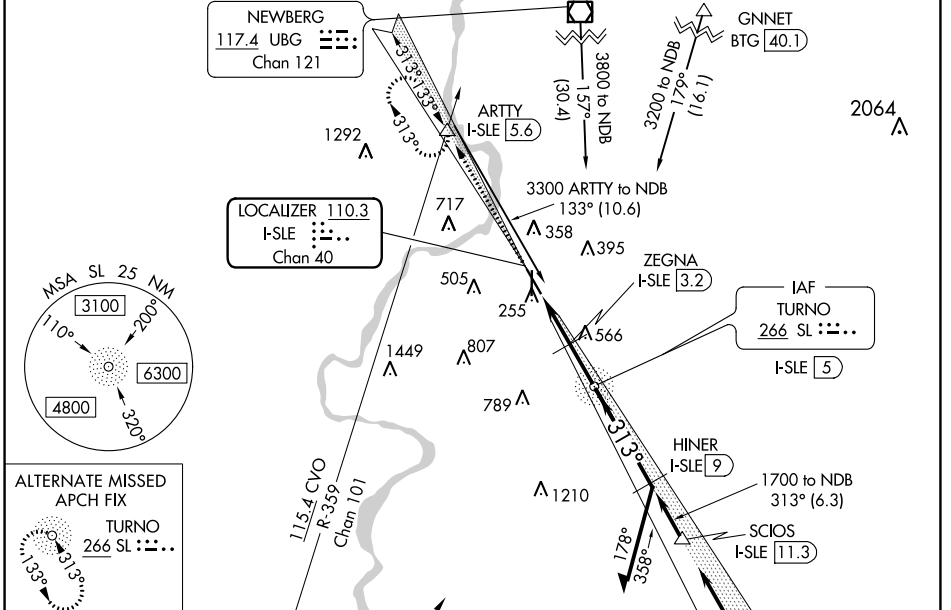


LOC/DME I-SLE 110.3 Chan 40	APP CRS 313°	Rwy Idg TDZE 213 Apt Elev 213	5811
--	------------------------	---	-------------

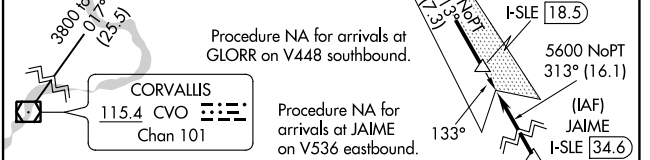
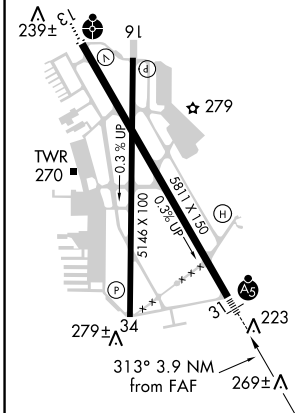
LOC Y RWY 31

MCNARY FIELD (SLE)

DME required. RADAR required.		SALEM TOWER ★		GND CON	UNICOM
<p>⚠ When local altimeter setting not received, use Mc Minnville altimeter setting and increase all MDAs 60 feet and visibility S-LOC 31 Cat C/D 1/8 SM and Circling Cat C 1/4 SM. For inop ALS, increase S-LOC 31 Cats C and D visibility to 1/8 SM. For inop ALS when using Mc Minnville altimeter setting, increase S-LOC 31 Cats C and D visibility to 1/4 SM. VDP NA when using Mc Minnville altimeter setting.</p>		<p>MALSRL</p>		<p>MISSED APPROACH: Climb to 4000 on I-SLE Localizer NW course (313°) to ARTTY INT/I-SLE 5.6 DME and hold, continue climb-in-hold to 4000.</p>	
ATIS 124.55	SEATTLE CENTER 125.8 291.7	119.1 (CTAF) 0 257.2		121.9	122.95



ELEV 213	D	TDZE 213
----------	---	----------



ARTTY I-SLE NW crs (313°)	ZEGNA I-SLE 3.2	HINER I-SLE 9
I-SLE 1.1	I-SLE 2.5	I-SLE 5
≤ 3.50° TCH 55		
1020*	1700	2400
1.4 NM	0.7 NM	1.8 NM
C		
D		

CATEGORY	A	B	C	D
S-LOC 31	780/24	567 (600-1/2)	780-1/4	567 (600-1/4)
CIRCLING	900-1	960-1	1060-2 1/2	1260-3
	687 (700-1)	747 (800-1)	847 (900-2 1/2)	1047 (1100-3)

NW-1, 25 FEB 2021 to 25 MAR 2021

NW-1, 25 FEB 2021 to 25 MAR 2021