


LOC I-SLK 108.9	APP CRS 229°	Rwy Idg TDZE Apt Elev	6333 1663 1663
---------------------------	------------------------	-----------------------------	---

ILS or LOC RWY 23

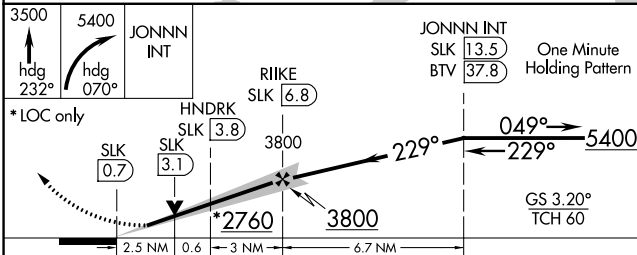
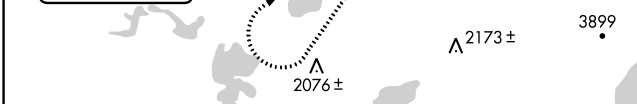
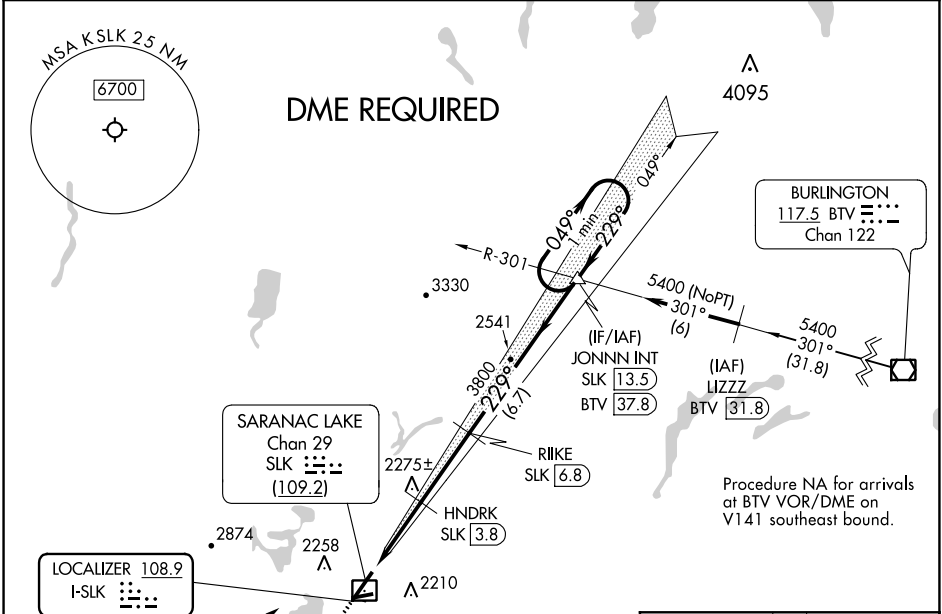
ADIRONDACK RGNL (SLK)

⚠ Circling to Rwy 5, 9, 27 NA at night.
⚠ Inop table does not apply to S-ILS 23.
❄ -28°C
 Rwy 23 helicopter visibility reduction below 3/4 SM NA.
 DME from SLK DME.
 Simultaneous reception of I-SLK and SLK DME required.

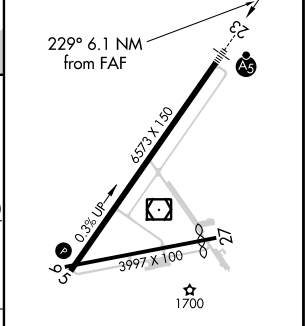
MALSR


MISSED APPROACH: Climb to 3500 on heading 232° then climbing right turn to 5400 on heading 070° to intercept I-SLK localizer course NE to JONNN INT/SLK 13.5 DME and hold.

ASOS 124.175	BOSTON CENTER 120.35 342.25	UNICOM 123.0 (CTAF)
------------------------	---------------------------------------	-------------------------------



ELEV 1663	D TDZE 1663
-----------	--------------------



CATEGORY	A	B	C	D
S-ILS 23	1863-3/4 200 (200-3/4)			
S-LOC 23	2580-3/4	917 (1000-3/4)	2580-2	917 (1000-1)
C CIRCLING	2580-1/4 917 (1000-1/4)	2660-1/2 997 (1000-1/2)	2660-3 997 (1000-3)	2680-3 1017 (1100-3)

HIRL Rwy 5-23 **⓪**
MIRL Rwy 9-27 **⓪**

NE-2, 25 FEB 2021 to 25 MAR 2021

NE-2, 25 FEB 2021 to 25 MAR 2021