

WAAS CH <b>42520</b> <b>W23A</b>	APP CRS <b>229°</b>	Rwy Idg TDZE Apt Elev	<b>6333</b> <b>1663</b> <b>1663</b>
----------------------------------------	------------------------	-----------------------------	-------------------------------------------

# RNAV (GPS) RWY 23

ADIRONDACK RGNL (SLK)

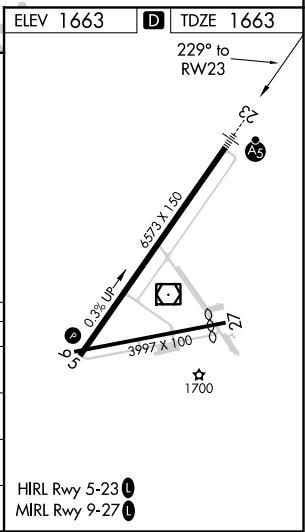
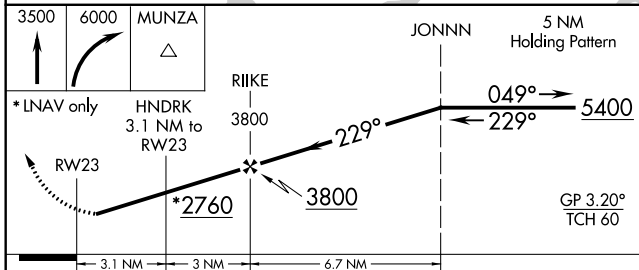
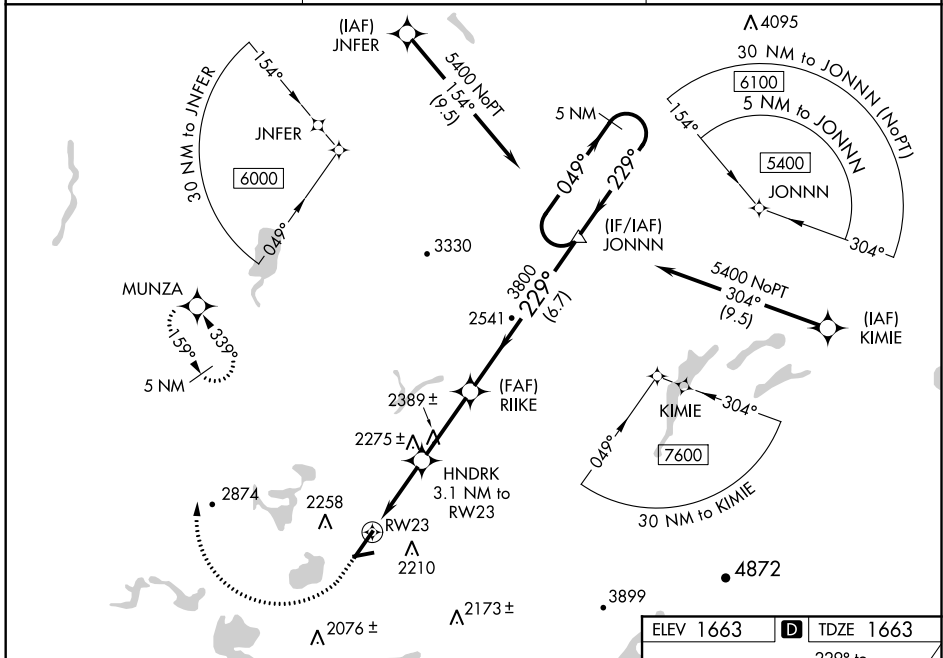
RNP APCH.

**⚠** Circling to Rwy 5, 9, 27 NA at night. For uncompensated Baro-VNAV systems, LNAV/VNAV NA below -18°C (0°F) or above 54°C (130°F). Rwy 23 helicopter visibility reduction below ¾ SM NA. For inop ALS, increase LNAV/VNAV all Cats visibility to 1 ¾ SM.

MALSR **A5**

**MISSED APPROACH:** Climb to 3500 then climbing right turn to 6000 direct MUNZA and hold, continue climb-in-hold to 6000.

ASOS <b>124.175</b>	BOSTON CENTER <b>120.35 342.25</b>	UNICOM <b>123.0 (CTAF)</b>
------------------------	---------------------------------------	-------------------------------



CATEGORY	A	B	C	D
LPV DA		1863-¾	200 (200-¾)	
LNAV/VNAV DA		2150-1	487 (500-1)	
LNAV MDA	2640-¾ 977 (1000-¾)	2640-1 977 (1000-1)	2640-2 ½	977 (1000-2 ½)
<b>C</b> CIRCLING	2640-1 ¼ 977 (1000-1 ¼)	2660-1 ½ 977 (1000-1 ½)	2660-3 977 (1000-3)	2680-3 1017 (1100-3)

NE-2, 25 FEB 2021 to 25 MAR 2021

NE-2, 25 FEB 2021 to 25 MAR 2021