

LOC/DME I-MDK <b>111.75</b> Chan 54 (Y)	APP CRS <b>168°</b>	Rwy ldg <b>8605</b> TDZE <b>27</b> Apt Elev <b>27</b>
---	------------------------	---

# ILS RWY 17L (SA CAT II)

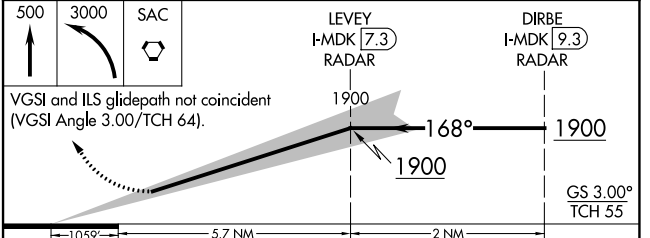
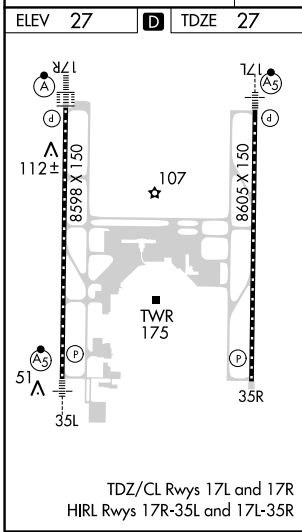
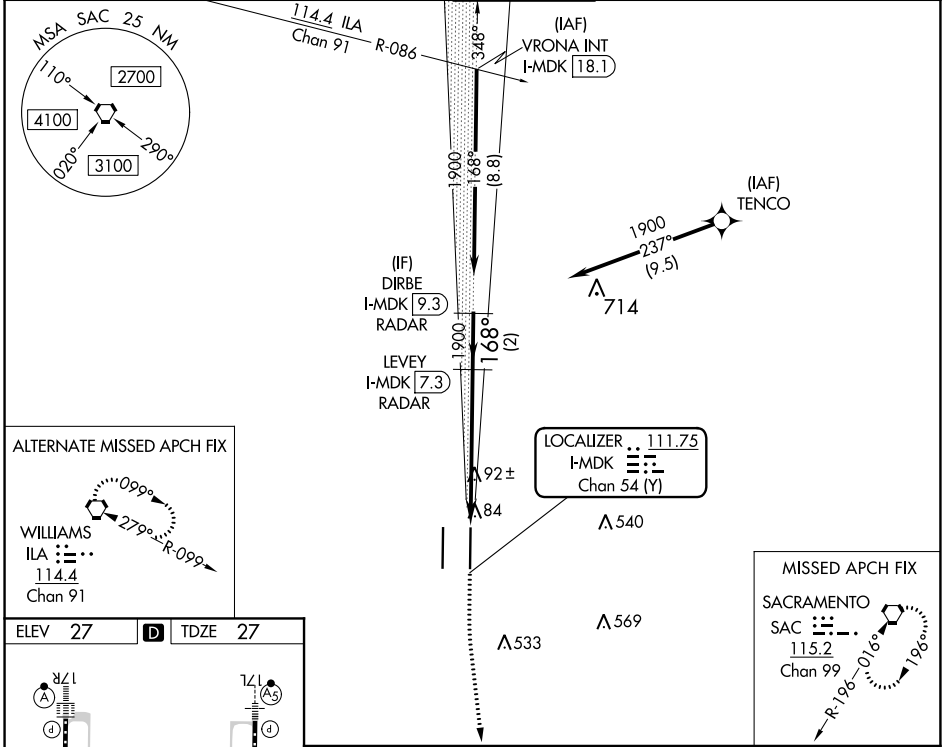
SACRAMENTO INTL (SMF)

RNAV 1-GPS or RADAR required for procedure entry.  
From TENCO: RNAV 1-GPS required. DME or RADAR required.

▼ Simultaneous approach authorized. Reduced lighting: Requires specific OPSPEC, MSPEC, or LOA approval and use of autoland or HUD to touchdown.

MALSR  
MISSED APPROACH: Climb to 500 then climbing left turn to 3000 direct SAC VORTAC and hold.

D-ATIS <b>126.75</b>	NORCAL APP CON <b>125.4 259.1</b> (W-NE) <b>127.4 317.5</b> (E-SE)	<b>125.25 257.9</b> (SW)	<b>CAPITOL TOWER</b> <b>125.7 256.7</b>	GND CON <b>121.7 256.7</b>	CLNC DEL <b>121.1 256.7</b>	CPDLC
-------------------------	--	--------------------------	--	-------------------------------	--------------------------------	-------



CATEGORY	A	B	C	D
S-ILS 17L	RA 108/12 100 DA 127			

**SA CATEGORY II ILS-SPECIAL AIRCREW & AIRCRAFT CERTIFICATION REQUIRED**

SW-2, 25 FEB 2021 to 25 MAR 2021

SW-2, 25 FEB 2021 to 25 MAR 2021