

LOC/DME I-SMF 111.1 Chan 48	APP CRS 168°	Rwy ldg 8598 TDZE 25 Apt Elev 27
--	------------------------	---

ILS or LOC RWY 17R

SACRAMENTO INTL (SMF)

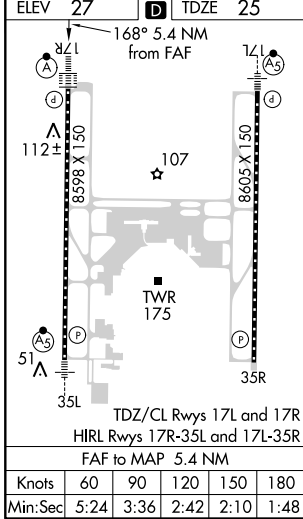
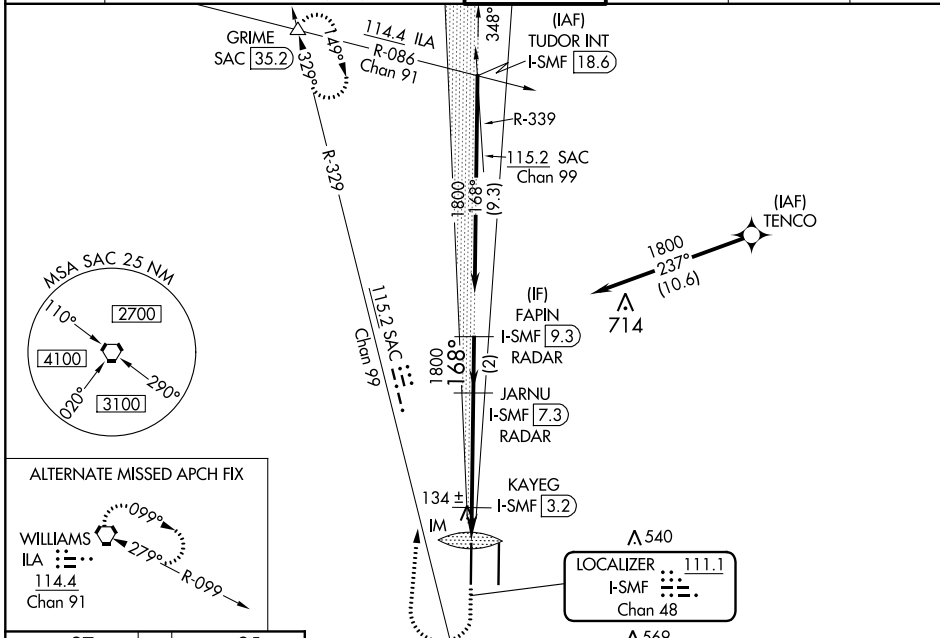
RNAV 1-GPS or RADAR required for procedure entry.
From TENCO: RNAV 1-GPS required. DME or RADAR required.



MISSED APPROACH: Climb to 500 then climbing right turn to 2000 on heading 350° and SAC VORTAC R-329 to GRIME INT/SAC 35.2 DME and hold.

Simultaneous approach authorized. Circling NA east of Rwy 17R-35L.

D-ATIS 126.75	NORCAL APP CON 125.4 259.1 (W-NE) 125.25 257.9 (SW) 127.4 317.5 (E-SE)	CAPITOL TOWER 125.7 256.7	GND CON 121.7 256.7	CLNC DEL 121.1 256.7	CPDLC
-------------------------	--	-------------------------------------	-------------------------------	--------------------------------	-------



ELEV 27	TDZE 25	500	2000	SAC R-329	GRIME	VGSI and ILS glidepath not coincident (VGSI Angle 3.00/TCH 72).				
* LOC only.		hdg 350°		JARNU I-SMF [7.3] RADAR	FAPIN I-SMF [9.3] RADAR					
KAYEG I-SMF [3.2]		IM		1800		1800		GS 3.00° TCH 57		
480*		0.1		1.2 NM		4.1 NM		2 NM		
CATEGORY	A	B	C	D						
S-ILS 17R	225/18				200 (200-½)					
S-LOC 17R	480/24	455 (500-½)		480/45		455 (500-¾)				
CIRCLING	480-1	453 (500-1)		480-1½		453 (500-1½)		580-2		
KAYEG FIX MINIMUMS (DME REQUIRED)										
S-LOC 17R	400/24	375 (400-½)		400/35		375 (400-¾)				
CIRCLING	440-1	480-1		480-1½		453 (500-1½)		580-2		
	413 (500-1)	453 (500-1)		453 (500-1½)		553 (600-2)				

SW-2, 25 FEB 2021 to 25 MAR 2021

SW-2, 25 FEB 2021 to 25 MAR 2021