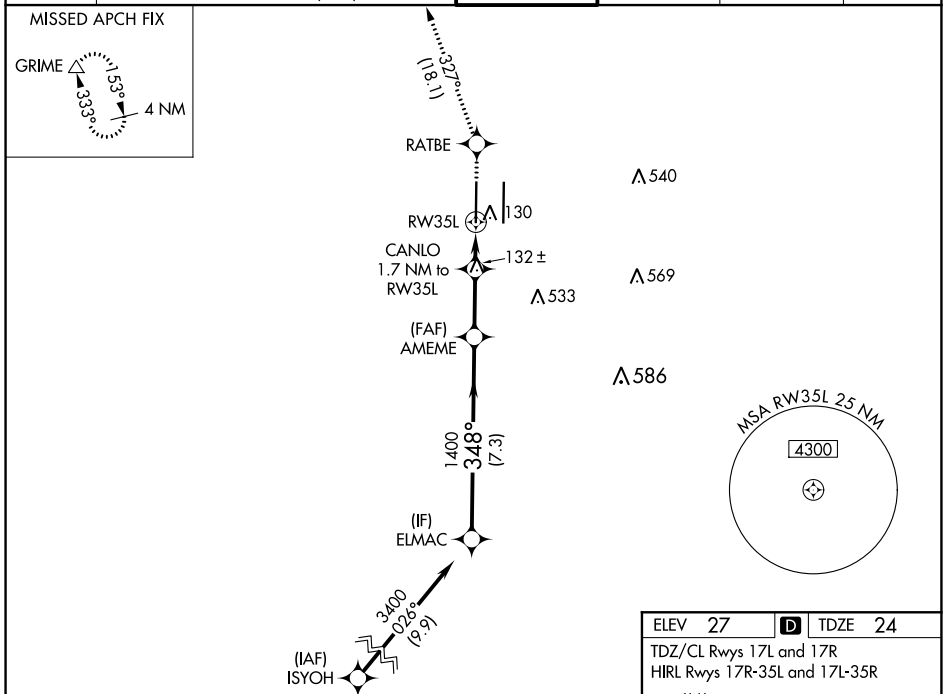


WAAS CH 86602 W35A	APP CRS 348°	Rwy Idg TDZE Apt Elev	8598 24 27
--	------------------------	-----------------------------	---------------------------------------

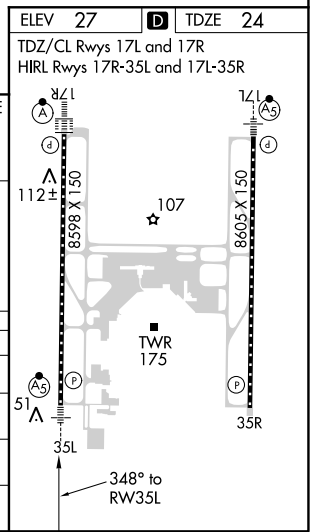
RNAV (GPS) Y RWY 35L

SACRAMENTO INTL (SMF)

RNP APCH.		MALSR 		MISSED APPROACH: Climb to 2000 direct RATBE and track 327° to GRIME and hold.	
▼ Circling NA east of Rwy 17R-35L. For uncompensated Baro-VNAV systems, LNAV/VNAV NA below -4°C or above 54°C. For inop ALS, increase LPV all Cats visibility to RVR 4000 and LNAV Cat C/D visibility to RVR 5500. # RVR 1800 authorized with use of FD or AP or HUD to DA.		NORCAL APP CON D-ATIS 126.75 125.4 259.1 (W-NE) 125.25 257.9 (SW) 127.4 317.5 (E-SE)		CAPITOL TOWER 125.7 256.7	
GND CON		CLNC DEL		CPDLC	
121.7 256.7		121.1 256.7			



VGSi and RNAV glidepath not coincident (VGSi Angle 3.00/TCH 76).		2000	RATBE	GRIME
ELMAC		↑		
GP 3.00° TCH 59			tr 327°	△
3400 348° 1400 *620 7.3 NM 2.4 NM 0.8 NM 0.9 NM		CANLO 1.7 NM to RWY35L *0.9 NM to RWY35L		*LNAV only
CATEGORY	A	B	C	D
LPV DA#		224/24	200 (200-½)	
LNAV/VNAV DA		313/24	289 (300-½)	
LNAV MDA	380/24	356 (400-½)	380/30	356 (400-⅝)
CIRCLING	440-1 413 (500-1)	480-1 453 (500-1)	480-1½ 453 (500-1½)	580-2 553 (600-2)



SW-2, 25 FEB 2021 to 25 MAR 2021

SW-2, 25 FEB 2021 to 25 MAR 2021