

APP CRS	Rwy Idg	<b>5510</b>
<b>175°</b>	TDZE	<b>4041</b>
	Apt Elev	<b>4044</b>

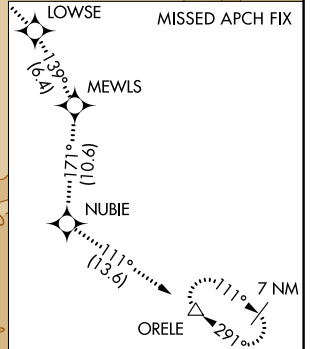
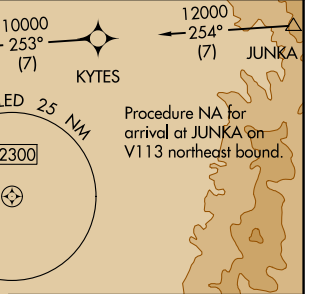
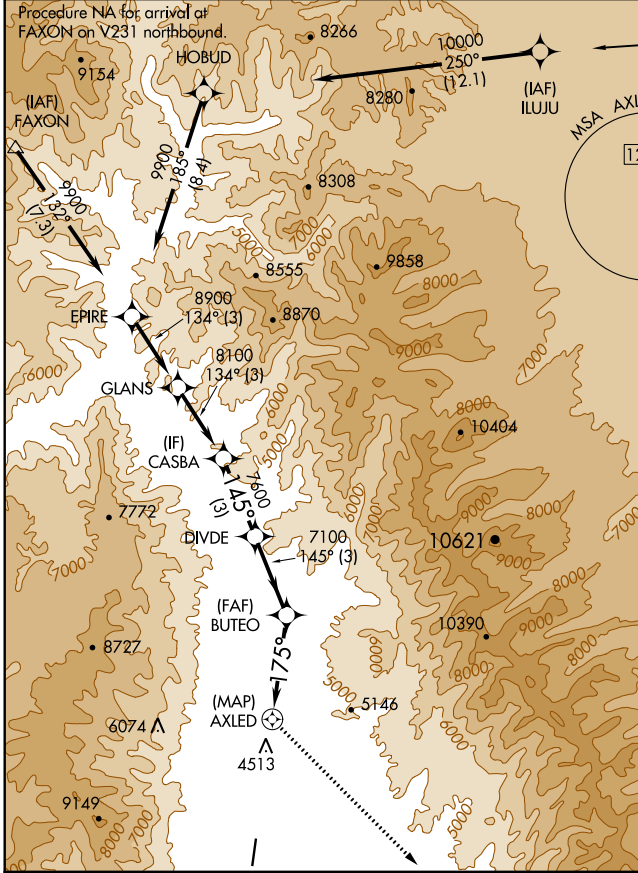
# RNAV (GPS) RWY 17

LEMHI COUNTY (SMN)

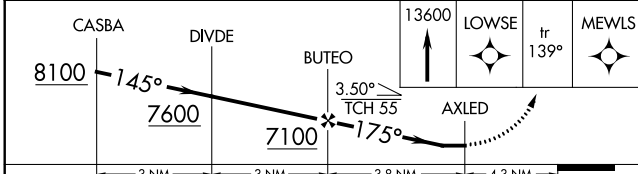
**NA**  
 DME/DME RNP-0.3 NA. Night landing: Rwy 35 NA.  
 Circling NA for Cats B and C east of Rwy 17-35.  
 Helicopter visibility reduction below 3/4 SM NA.

**MISSED APPROACH:** Climb to 13600 direct LOWSE and track 139° to MEWLS and track 171° to NUBIE and track 111° to ORELE and hold, continue climb-in-hold to 13600.

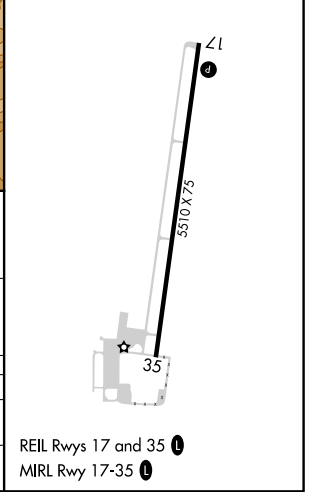
AWOS-3PT <b>135,075</b>	SALT LAKE CENTER <b>132.4 338.3</b>	UNICOM <b>122.8 (CTAF)</b>
----------------------------	--	-------------------------------



ELEV 4044	TDZE 4041
-----------	-----------



CATEGORY	A	B	C	D
LNVA MDA	5740-5 1699 (1700-5)			NA
<b>C</b> CIRCLING	5740-5	1696 (1700-5)	6180-5 2136 (2200-5)	NA



NW-1, 25 FEB 2021 to 25 MAR 2021

NW-1, 25 FEB 2021 to 25 MAR 2021