

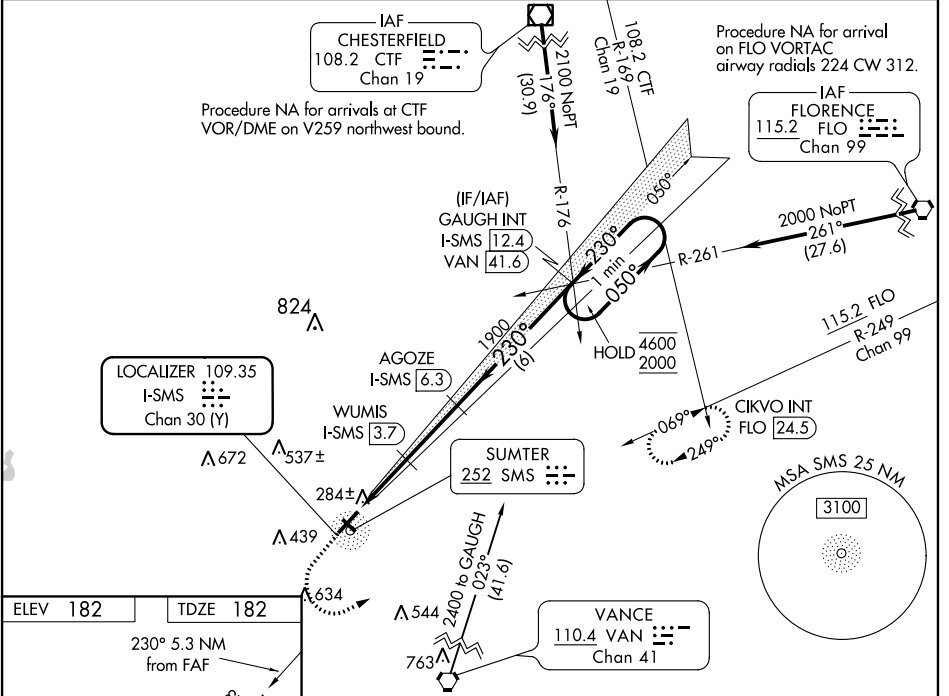
LOC/DME I-SMS 109.35 Chan 30 (Y)	APP CRS 230°	Rwy Idg 5501 TDZE 182 Apt Elev 182
--	------------------------	---

ILS or LOC RWY 23

SUMTER (SMS)

DME required. 	ODALS 	MISSED APPROACH: Climb to 700 then climbing left turn to 2000 on heading 040° and FLO VORTAC R-249 to CIKVO INT/FLO 24.5 DME and hold.
Circling NA to Rwy 14 and 32. Inop table does not apply to S-ILS 23 all Cats.		

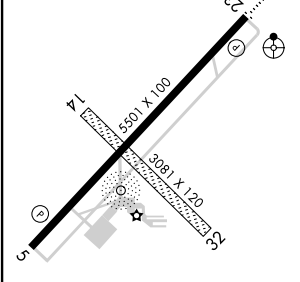
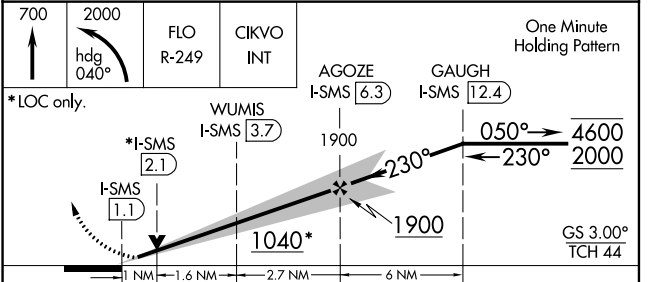
AWOS-3 118.075	SHAW APP CON * 125.4	UNICOM 122.7 (CTAF)
--------------------------	--------------------------------	-------------------------------



SE-2, 25 FEB 2021 to 25 MAR 2021

SE-2, 25 FEB 2021 to 25 MAR 2021

ELEV 182	TDZE 182
230° 5.3 NM from FAF	



CATEGORY	A	B	C	D
S-ILS 23	382- ³ / ₄ 200 (200- ³ / ₄)			
S-LOC 23	540- ³ / ₄	358 (400- ³ / ₄)	540- ⁷ / ₈	358 (400- ⁷ / ₈)
CIRCLING	600-1 418 (500-1)	680-1 498 (500-1)	1000-2 ¹ / ₂ 818 (900-2 ¹ / ₂)	1000-2 ³ / ₄ 818 (900-2 ³ / ₄)

MIRL Rwy 5-23
REIL Rwy 5 and 23