

WAAS CH <b>61215</b> <b>W05A</b>	APP CRS <b>050°</b>	Rwy Idg TDZE <b>181</b> Apt Elev <b>182</b>	<b>5501</b>
--	------------------------	---	-------------

# RNAV (GPS) RWY 5

SUMTER (SMS)

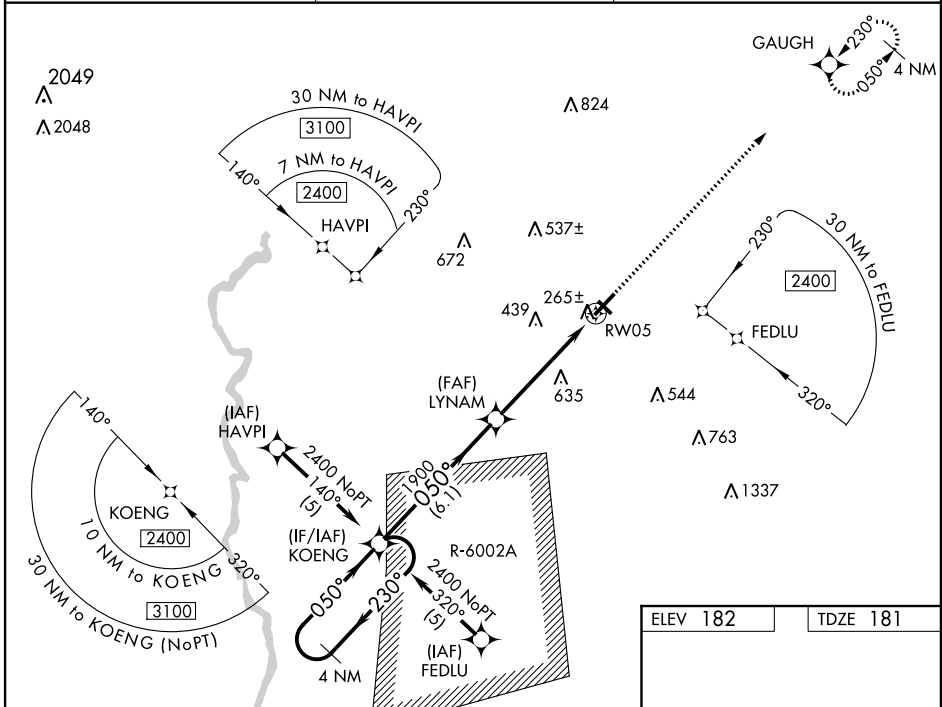
**⚠** For uncompensated Baro-VNAV systems, LNAV/VNAV NA below -1.5°C (5°F) or above 48°C (118°F). DME/DME RNP-0.3 NA. Procedure NA when R-6002A is active. Circling NA to Rwy 14-32. When local altimeter setting not received, use Camden altimeter setting and increase all DA 65 feet and all MDA 80 feet and LPV all Cats, LNAV/VNAV all Cats, LNAV Cats C/D, and Circling Cats C/D visibilities ¼ mile. VDP and Baro/VNAV NA when using Camden altimeter setting.

MISSED APPROACH: Climb to 2400 direct GAUGH and hold.

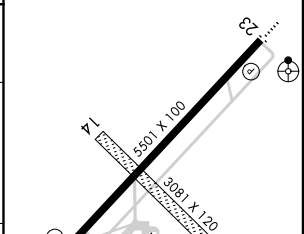
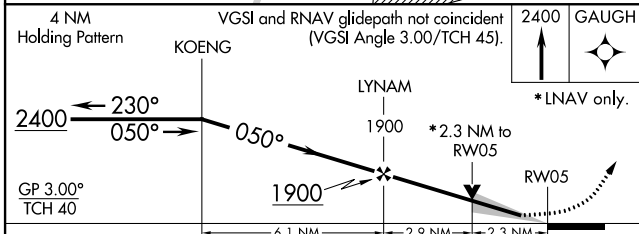
AWOS-3  
**118.075**

SHAW APP CON\*  
**125.4**

UNICOM  
**122.7 (CTAF)**



ELEV 182	TDZE 181
----------	----------



CATEGORY	A	B	C	D
LPV DA		381-¾	200 (200-¾)	
LNAV/VNAV DA		535-1¼	354 (400-1¼)	
LNAV MDA	940-1 759 (800-1)	940-1¼ 759 (800-1¼)	940-2¼ 759 (800-2¼)	940-2½ 759 (800-2½)
<b>C</b> CIRCLING	940-1 758 (800-1)	940-1¼ 758 (800-1¼)	1000-2½ 818 (900-2½)	1000-2¾ 818 (900-2¾)

MIRL Rwy 5-23  
REL Rwy 5 and 23

SE-2, 25 FEB 2021 to 25 MAR 2021

SE-2, 25 FEB 2021 to 25 MAR 2021