

APP CRS	Rwy Idg	<b>2163</b>
<b>174°</b>	TDZE	<b>416</b>
	Apt Elev	<b>416</b>

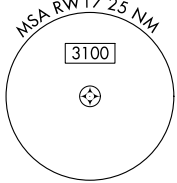
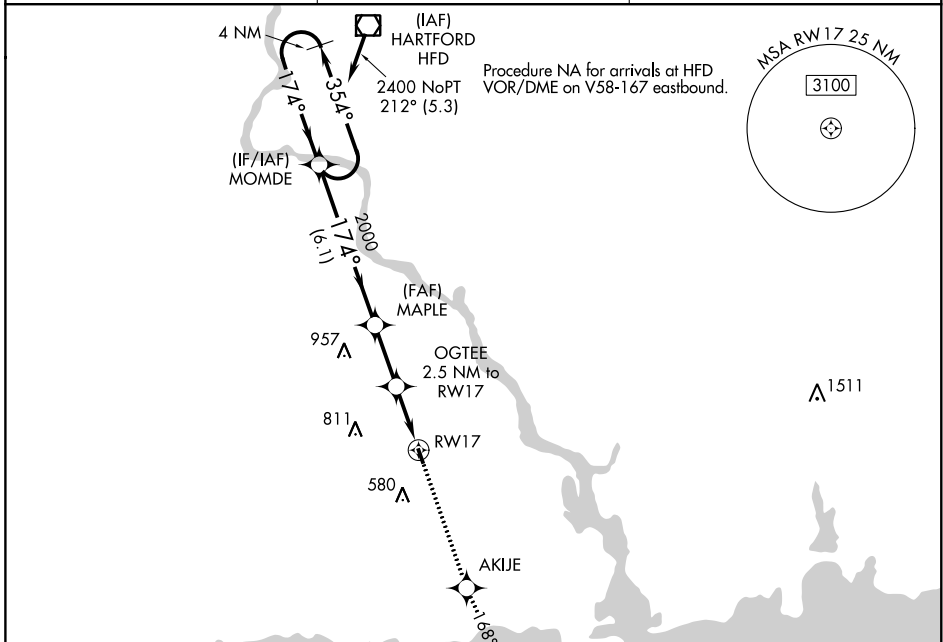
# RNAV (GPS) RWY 17

CHESTER (SNC)

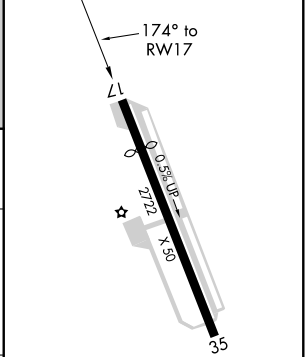
**⚠** DME/DME RNP-0.3 NA. Procedure NA at night. Helicopter visibility reduction below 1 SM NA.  
**⚠** When local altimeter setting not received, use Meriden altimeter setting and increase all MDA 100 feet.

**MISSED APPROACH:** Climb to 2100 direct AKIJE and via track 168° to FLIBB and hold.

AWOS-3 <b>118.325</b>	NEW YORK APP CON <b>124.075 343.65</b>	UNICOM <b>122.725</b> (CTAF)
--------------------------	---	---------------------------------



ELEV 416	TDZE 416
----------	----------



2400 to MOMDE 353° (21.2)

2400

354°

174°

174°

2000

3.04° TCH 40

MAPLE

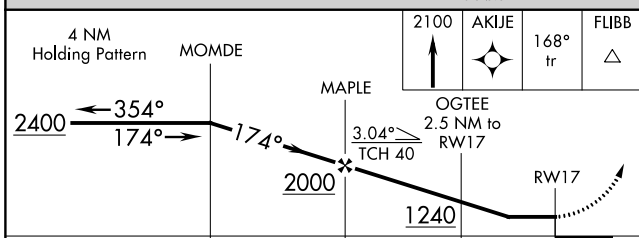
OGTEE 2.5 NM to RWY 17

1240

168° tr

FLIBB

4 NM



CATEGORY	A	B	C	D
RNAV MDA	960-1	544 (600-1)		NA
CIRCLING	960-1	544 (600-1)		NA

REIL Rwy 17 and 35  
MIRL Rwy 17-35

NE-1, 25 FEB 2021 to 25 MAR 2021

NE-1, 25 FEB 2021 to 25 MAR 2021