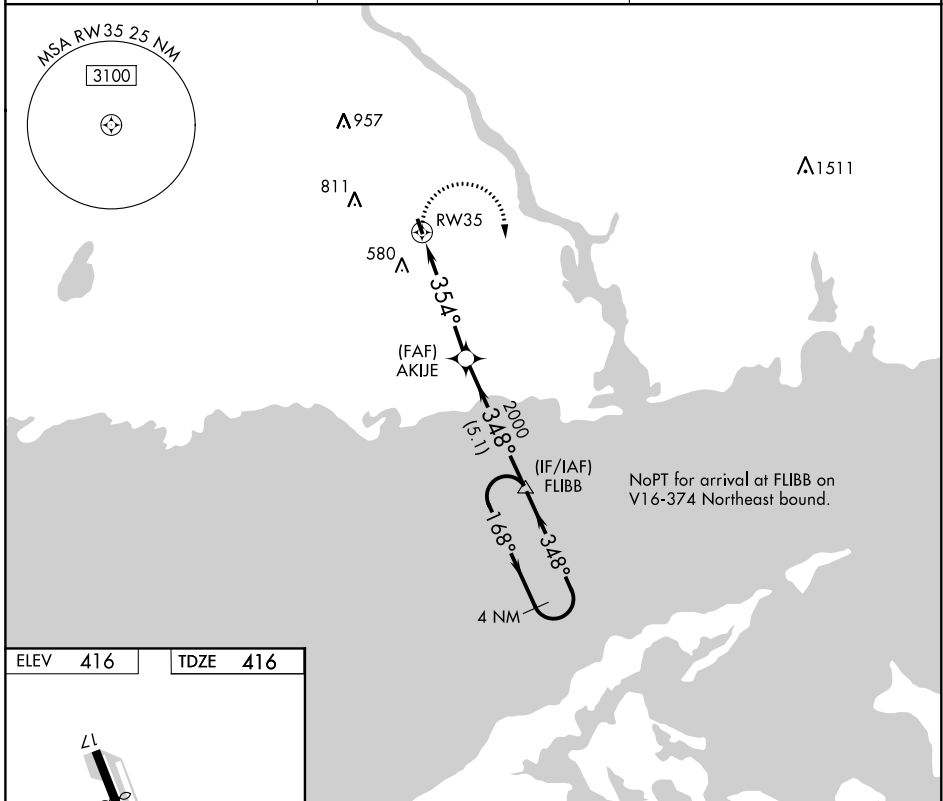


APP CRS <b>354°</b>	Rwy Idg <b>2722</b>
	TDZE <b>416</b>
	Apt Elev <b>416</b>

# RNAV (GPS) RWY 35

CHESTER (SNC)

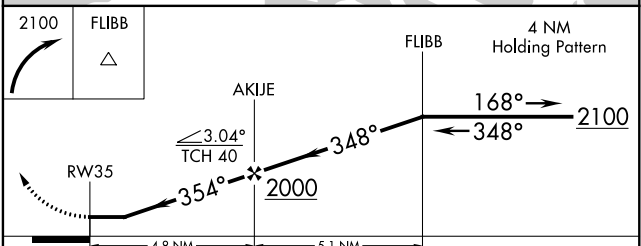
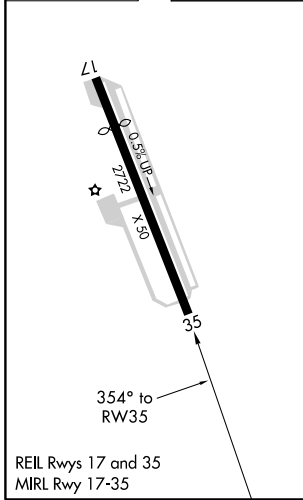
<p><b>⚠</b> DME/DME RNP-0.3 NA. Procedure NA at night. Helicopter visibility reduction below 1 SM NA. When local altimeter setting not received, use Meriden altimeter setting and increase all MDA 100 feet.</p>	<p>MISSED APPROACH: Climbing right turn to 2100 direct FLIBB and hold.</p>
<p>AWOS-3 <b>118.325</b></p>	<p>NEW YORK APP CON <b>124.075 343.65</b></p>
<p>UNICOM <b>122.725</b> (CTAF)</p>	



NE-1, 25 FEB 2021 to 25 MAR 2021

NE-1, 25 FEB 2021 to 25 MAR 2021

ELEV	416	TDZE	416
------	-----	------	-----



CATEGORY	A	B	C	D
LNAV MDA	820-1	404 (500-1)	NA	
CIRCLING	920-1	504 (600-1)	NA	