

WAAS CH 42912 W19A	APP CRS 189°	Rwy Idg TDZE Apt Elev	5000 467 473
--	------------------------	-----------------------------	---

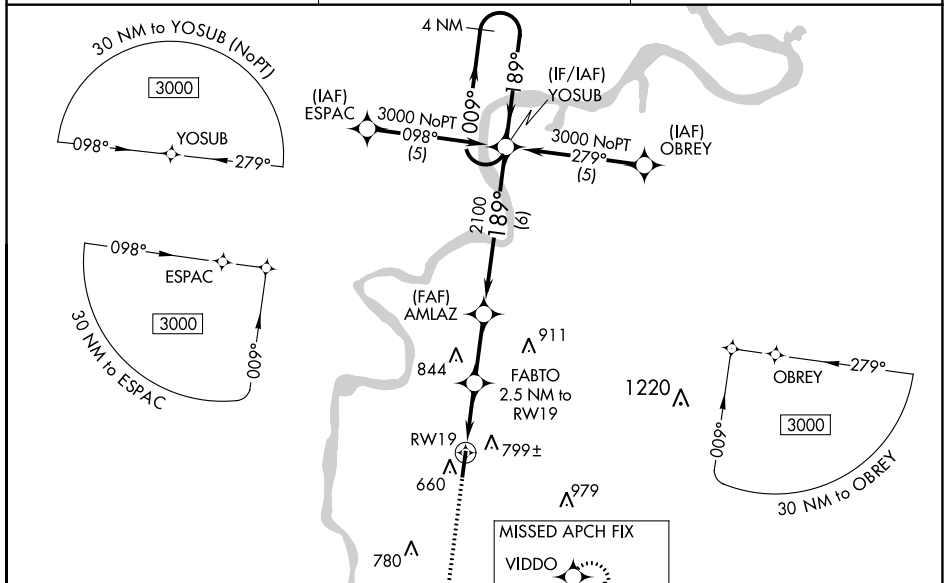
RNAV (GPS) RWY 19

SAVANNAH-HARDIN COUNTY (SNH)

Baro-VNAV NA when using Muscle Shoals altimeter setting. For uncompensated Baro-VNAV systems, LNAV/VNAV NA below -15° C (5° F) or above 54° C (130° F). DME/DME RNP-0.3 NA. Visibility reduction by helicopters NA. When local altimeter setting not received use Muscle Shoals, AL altimeter setting and increase all DA 102 feet and all MDA 120 feet and increase LPV visibility all Cats ½ mile, LNAV/VNAV visibility all Cats ¼ mile, LNAV Cat. C visibility ½ mile, Circling Cat. B visibility ¼ mile and Circling Cat. C visibility ½ mile.

MISSED APPROACH:
Climb to 3000 direct VIDDO and hold.

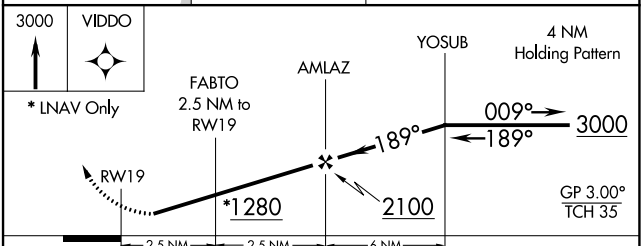
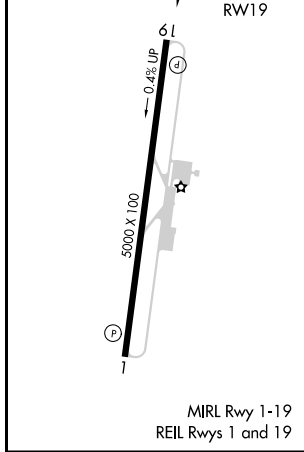
AWOS-3 133.925	MEMPHIS CENTER 124.35 239.3	UNICOM 122.8 (CTAF)
--------------------------	---------------------------------------	-------------------------------



SE-1, 25 FEB 2021 to 25 MAR 2021

SE-1, 25 FEB 2021 to 25 MAR 2021

ELEV 473	TDZE 467
----------	----------



CATEGORY	A	B	C	D	
LPV DA	873-1½			406 (400-1½)	NA
LNAV/VNAV DA	999-2			532 (600-2)	NA
LNAV MDA	1060-1 593 (600-1)		1060-1½ 593 (600-1½)		NA
CIRCLING	1100-1 627 (700-1)		1100-1¾ 627 (700-1¾)		NA