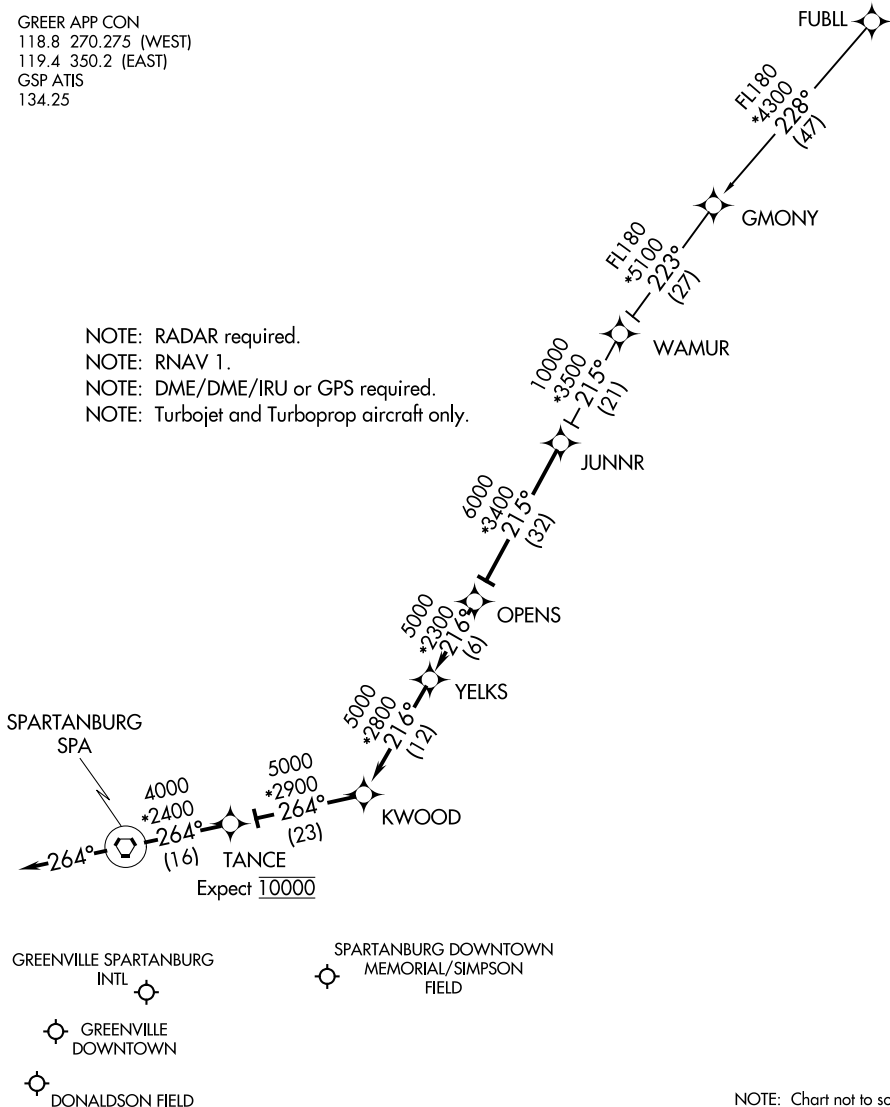


# JUNNR THREE ARRIVAL (RNAV)

GREER, SOUTH CAROLINA

GREER APP CON  
 118.8 270.275 (WEST)  
 119.4 350.2 (EAST)  
 GSP ATIS  
 134.25

NOTE: RADAR required.  
 NOTE: RNAV 1.  
 NOTE: DME/DME/IRU or GPS required.  
 NOTE: Turbojet and Turboprop aircraft only.



NOTE: Chart not to scale.

## ARRIVAL ROUTE DESCRIPTION

### FUBLL TRANSITION (FUBLL.JUNNR3)

From JUNNR on track 215° to OPENS, then on track 216° to YELKS, then on track 216° to KWOOD, then on track 264° to TANCE, then on track 264° to SPA VORTAC, then on heading 264° or as assigned by ATC. Expect RADAR vectors to final approach course.

# JUNNR THREE ARRIVAL (RNAV)

GREER, SOUTH CAROLINA