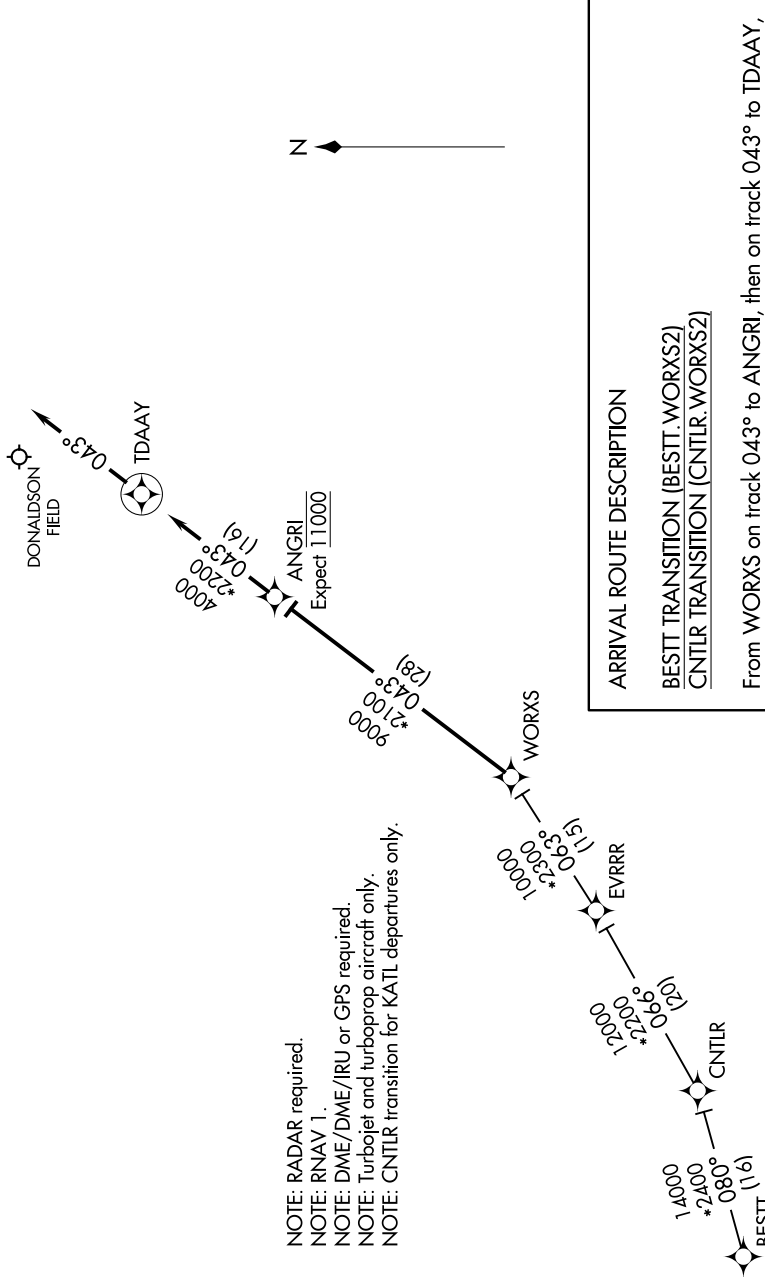


# WORXS TWO ARRIVAL(RNAV)

GREER, SOUTH CAROLINA

SE-2, 25 FEB 2021 to 25 MAR 2021

GREER APP CON  
118.8 270.275 (WEST)  
119.4 350.2 (EAST)  
GSP ATIS  
134.25



- NOTE: RADAR required.
- NOTE: RNAV 1.
- NOTE: DME/DME/IRU or GPS required.
- NOTE: Turbojet and turboprop aircraft only.
- NOTE: CNTLR transition for KATL departures only.

**ARRIVAL ROUTE DESCRIPTION**

**BESTT TRANSITION (BESTT.WORXS2)**

**CNTLR TRANSITION (CNTLR.WORXS2)**

From WORXS on track 043° to ANGR1, then on track 043° to TDAAY, then on heading 043°. Expect RADAR vectors to final approach course.

NOTE: Chart not to scale.

SE-2, 25 FEB 2021 to 25 MAR 2021

# WORXS TWO ARRIVAL(RNAV)

GREER, SOUTH CAROLINA