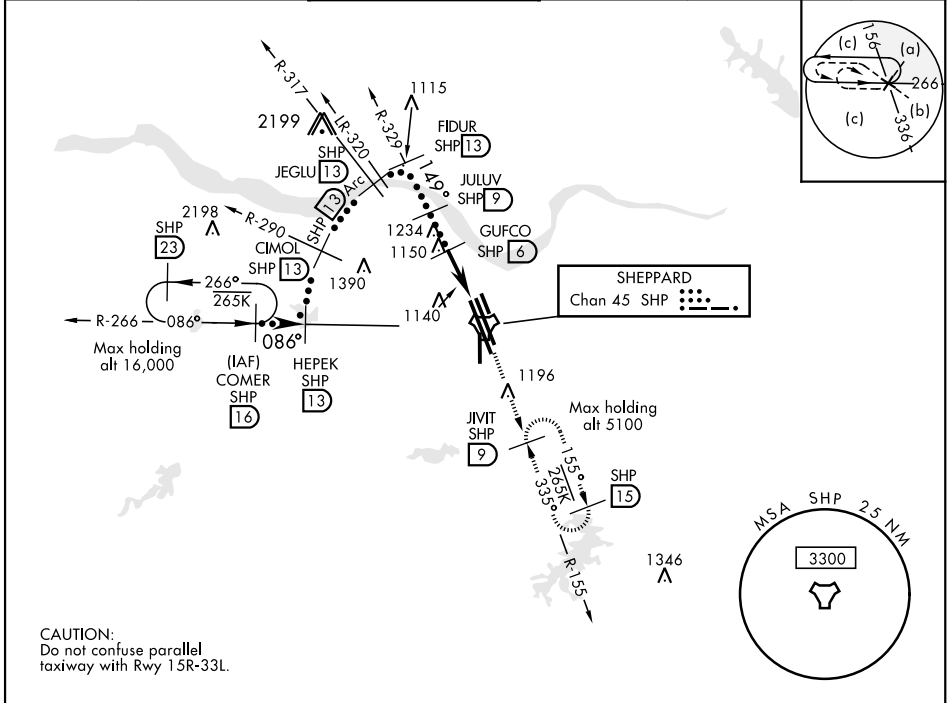


# HI-TACAN RWY 15R

|  |                  |   |                |  |
|--|------------------|---|----------------|--|
| TACAN SHP<br>Chan 45   | APCH CRS<br>149° | Rwy Idg 13,100<br>THRE 998<br>Arprt Elev 1019 | JAL-454 [USAF] | SHEPPARD AFB/WICHITA FALLS MUNI (KSPS)   |
| * When ALS inop, increase CAT CDE vis to 1¼ miles.<br>** Circling not authorized W of Rwy 15R-33L. |                  |   | MALSR<br>(A5)  | MISSED APPROACH: Climb and maintain 3100, intercept SHP TACAN R-155 to SHP R-155/9 DME (JIVIT) and hold. |

|                        |                                   |   |                        |                           |     |
|------------------------|-----------------------------------|---|------------------------|---------------------------|-----|
| ATIS *<br>132.05 269.9 | SHEPPARD APP CON<br>118.2 269.025 | SHEPPARD TOWER *<br>119.75 279.525 (CTAF) | GND CON<br>125.5 289.4 | CLNC DEL<br>121.2 282.225 | ASR |
|------------------------|-----------------------------------|---|------------------------|---------------------------|-----|



SC-2, 25 FEB 2021 to 25 MAR 2021

SC-2, 25 FEB 2021 to 25 MAR 2021

|  |  |   |             |
|--|--|---|-------------|
| EMERG SAFE ALT 100 NM 4600   |  | ELEV 1019   | THRE 998    |
| COMER R-266 HEPEK R-290 CIMOL R-290 JEGLU R-317 FIDUR R-329 JULUV GUFACO ZUKUL TACAN<br>VGS1 and Descent Angle not coincident. |  | 3100 SHP R-155  | JIVIT SHP 9 |
| CATEGORY C D E<br>S-15R* 1420-¾ 422 (500-¾)<br>CIRCLING** 1480-1½ (500-1½) 2020-3 (1100-3) 2080-3 (1100-3)                     |  | REIL Rwy 15L, 33R, and 35<br>HIRL all Rwy<br>TWR 1160<br>1261 |             |

# HI-TACAN RWY 15R