

RNAV (GPS) RWY 15C

APCH CRS	Rwy Idg	10.002
153°	TDZE	1003
	Arprt Elev	1019

AL-454 [USAF]

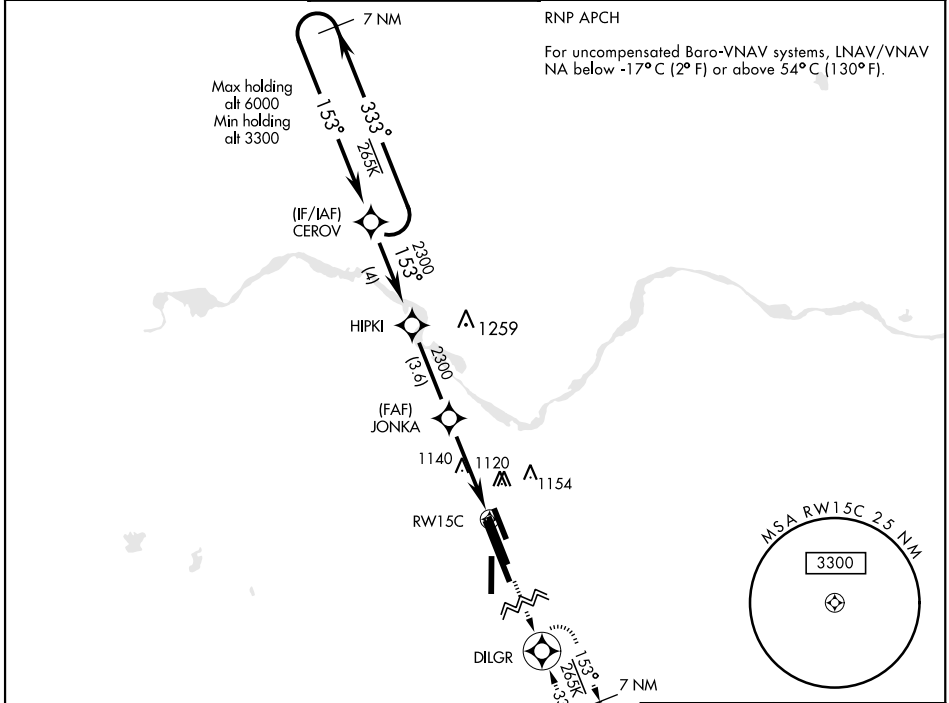
SHEPPARD AFB/WICHITA FALLS MUNI (KSPS)

▼ * When ALS inop, increase vis to 1½ miles.
 ** When ALS inop, increase CAT AB vis to 1 mile; CAT CDE vis to 1½ miles.
 *** Circling NA southwest of Rwy 15R-33L.



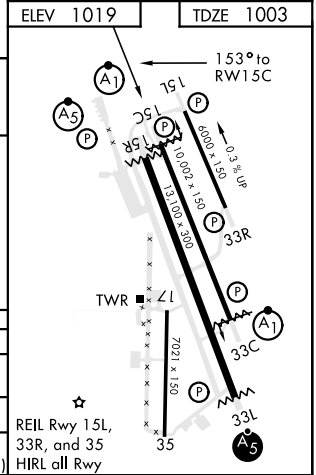
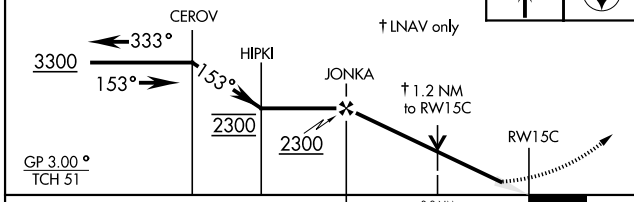
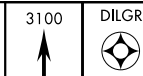
MISSED APPROACH: Climb to 3100 direct DILGR and hold.

ATIS ★	SHEPPARD APP CON	SHEPPARD TOWER ★	GND CON	CLNC DEL	ASR
132.05 269.9	118.2 269.025	119.75 0 279.525 (CTAF)	125.5 289.4	121.2 282.225	



EMERG SAFE ALT 100 NM 4600

VGSI and RNAV glidepath not coincident (VGSI Angle 3.00/TCH 46).



CATEGORY	A	B	C	D	E
LNAV/VNAV DA*	1397-5/8		394	(400-5/8)	
LNAV MDA**	1420-1/2	417 (500-1/2)	1420-3/4	417	(500-3/4)
*** CIRCLING	1440-1	1480-1	1480-1 1/2	2020-3	2080-3
	421 (500-1)	461 (500-1)	461 (500-1 1/2)	1001 (1100-3)	1061 (1100-3)

RNAV (GPS) RWY 15C

SC-2, 25 FEB 2021 to 25 MAR 2021

SC-2, 25 FEB 2021 to 25 MAR 2021