

RNAV (GPS) RWY 15R

APCH CRS	Rwy ldg	13,100
153°	TDZE	998
	Arprt Elev	1019

AL-454 [USAF]

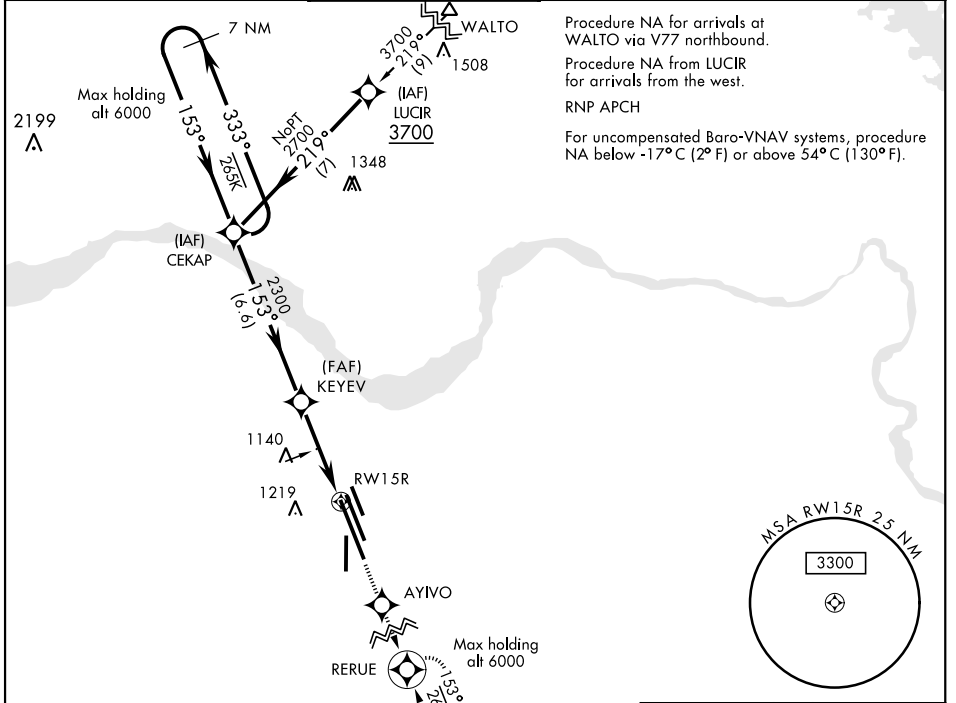
SHEPPARD AFB/WICHITA FALLS MUNI (KSPS)

▼ * When ALS inop, increase CAT A vis to ¾ mile; CAT BCDE vis to ½ mile.
 ** When ALS inop, increase CAT AB vis to 1 mile; CAT CDE vis to 1¼ mile.
 *** Circling NA West of Rwy 15R-33L.

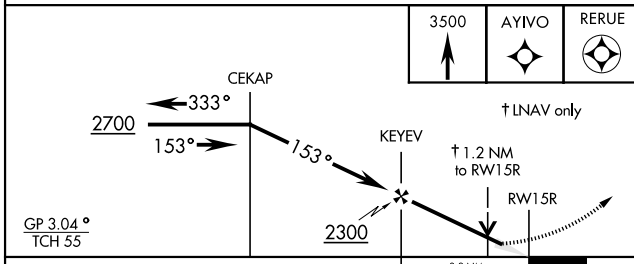


MISSED APPROACH: Climb to 3500 direct AYIVO and via 153° track to RERUE and hold.

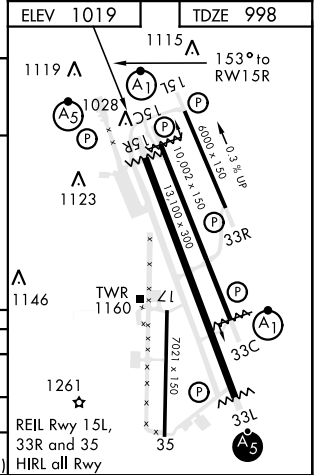
ATIS ★	SHEPPARD APP CON	SHEPPARD TOWER ★	GND CON	CLNC DEL	ASR
132.05 269.9	118.2 269.025	119.75 279.525 (CTAF)	125.5 289.4	121.2 282.225	



EMERG SAFE ALT FROM RWY 15R 100 NM 4600



CATEGORY	A	B	C	D	E
LNAV/VNAV DA*	1255-½ 257 (300-½)	1266-½ 268 (300-½)	1274-½ 276 (300-½)	1285-½ 287 (300-½)	
LNAV MDA**	1420-½	422 (500-½)	1420-¾		422 (500-¾)
*** CIRCLING	1440-1	1480-1	1480-½	2020-3	2080-3
	421 (500-1)	461 (500-1)	461 (500-½)	1001 (1100-3)	1061 (1100-3)



RNAV (GPS) RWY 15R

SC-2, 25 FEB 2021 to 25 MAR 2021

SC-2, 25 FEB 2021 to 25 MAR 2021