

RNAV (GPS) RWY 33C

APCH CRS 333°	Rwy ldg 10,002 TDZE 989 Arprt Elev 1019
-------------------------	--

AL-454 [USAF]

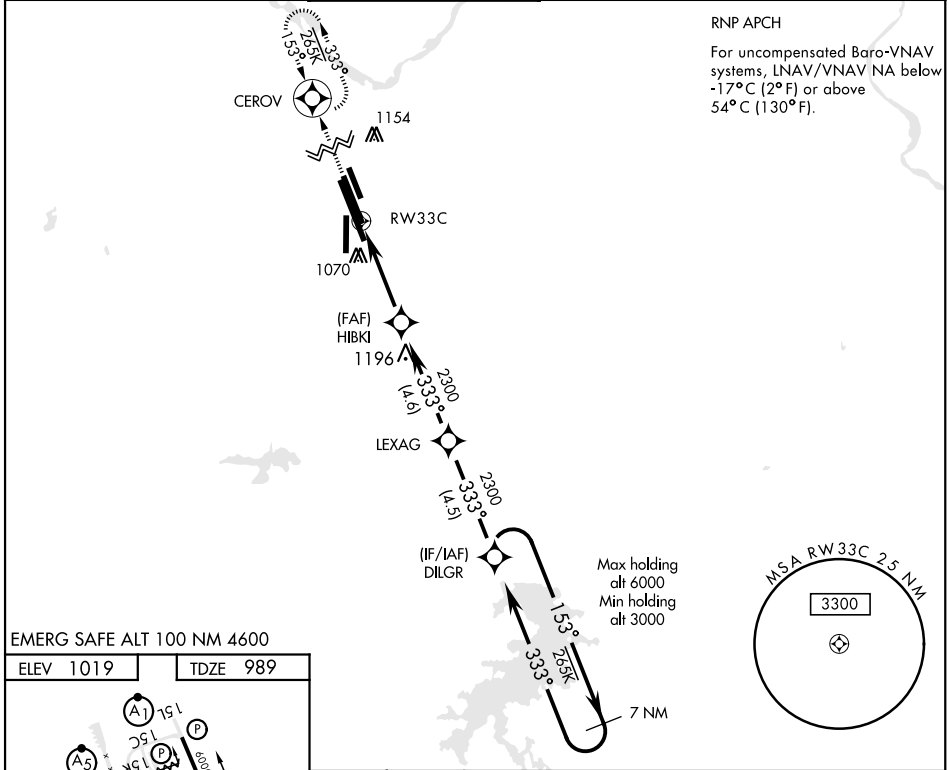
SHEPPARD AFB/WICHITA FALLS MUNI (KSPS)

▼ * When ALS inop, increase vis to 1 mile.
** Circling NA southwest of Rwy 15R-33L.



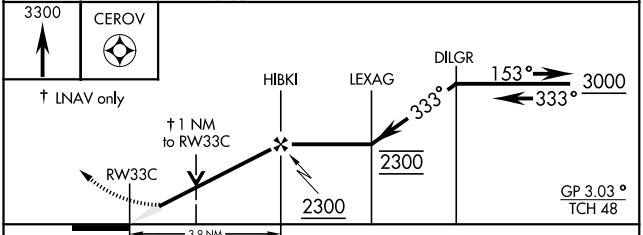
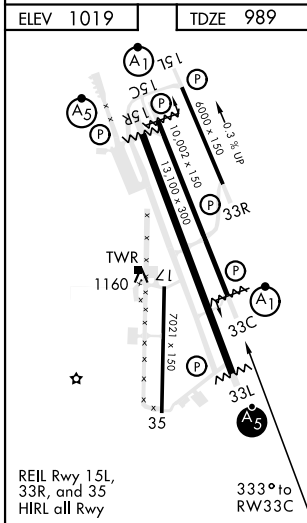
MISSED APPROACH: Climb to 3300 direct CERVO and hold.

ATIS ★ 132.05 269.9	SHEPPARD APP CON 118.2 269.025	SHEPPARD TOWER ★ 119.75 0 279.525 (CTAF)	GND CON 125.5 289.4	CLNC DEL 121.2 282.225	ASR
-------------------------------	--	--	-------------------------------	----------------------------------	-----



RNP APCH
For uncompensated Baro-VNAV systems, LNAV/VNAV NA below -17°C (2°F) or above 54°C (130°F).

EMERG SAFE ALT 100 NM 4600



CATEGORY	A	B	C	D	E
LNAV/VNAV DA *	1322-½		333	(400-½)	
LNAV MDA *	1360-½	371 (400-½)	1360-¾	371 (400-¾)	
C CIRCLING **	1440-1 421 (500-1)	1480-1 461 (500-1)	1480-1½ 461 (500-1½)	2020-3 1001 (1100-3)	2080-3 1061 (1100-3)

RNAV (GPS) RWY 33C

SC-2, 25 FEB 2021 to 25 MAR 2021

SC-2, 25 FEB 2021 to 25 MAR 2021