

RNAV (GPS) RWY 33L

SHEPPARD AFB/WICHITA FALLS MUNI (KSPS)

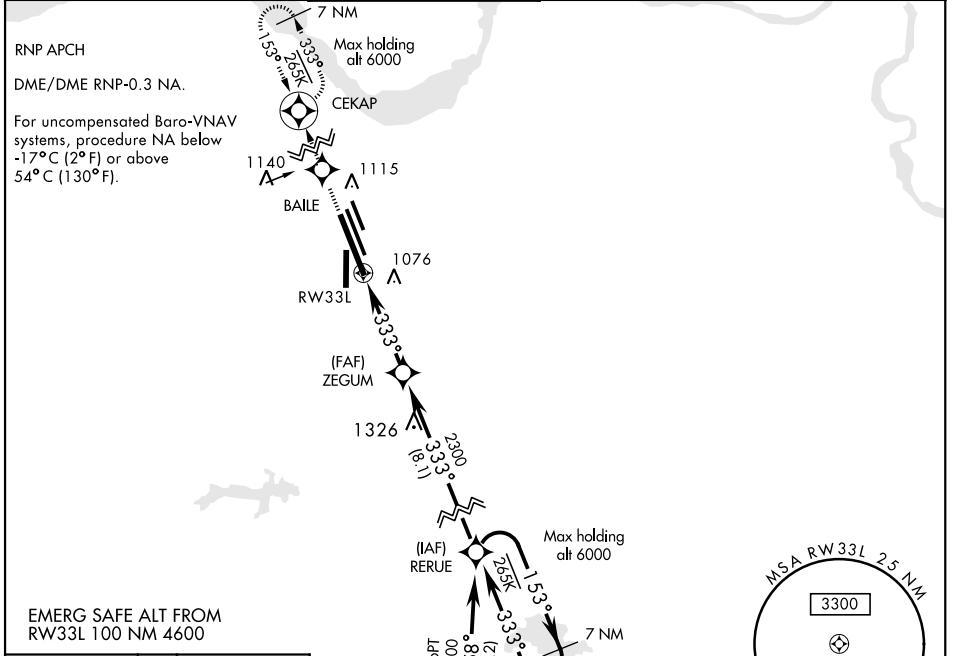
APCH CRS 333°	Rwy ldg 13,100
	TDZE 1000
	Arpt Elev 1019

▽ * When ALS inop, increase vis to 3/4 mile.
 ** When ALS inop, increase vis to 1 mile.
 *** Circling NA West of Rwy 15R-33L.

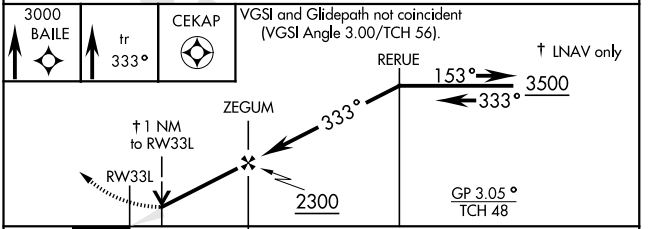
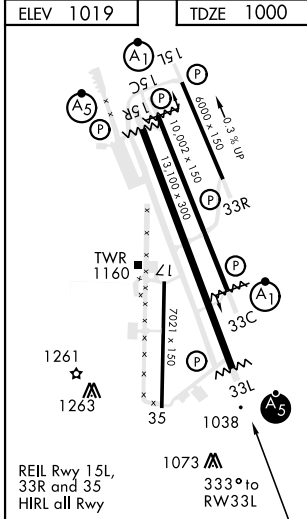


MISSED APPROACH: Climb to 3000 via 333° track to BAILE, and via 333° track to CEKAP and hold.

ATIS * 132.05 269.9	SHEPPARD APP CON 118.2 269.025	SHEPPARD TOWER * 119.75 0 279.525 (CTAF)	GND CON 125.5 289.4	CLNC DEL 121.2 282.225	ASR
-------------------------------	--	--	-------------------------------	----------------------------------	-----



EMERG SAFE ALT FROM RW33L 100 NM 4600



CATEGORY	A	B	C	D	E
LNAV/VNAV DA *	1255-1/2 255 (300-1/2)				
LNAV MDA **	1360-1/2	360 (400-1/2)	1360-5/8	360 (400-3/4)	
*** CIRCLING	1440-1 421 (500-1)	1480-1 461 (500-1)	1480-1 461 (500-1 1/2)	2020-3 1001 (1100-3)	2080-3 1061 (1100-3)

RNAV (GPS) RWY 33L

SC-2, 25 FEB 2021 to 25 MAR 2021

SC-2, 25 FEB 2021 to 25 MAR 2021