

WICHITA FALLS, TEXAS

VOR/DME-E

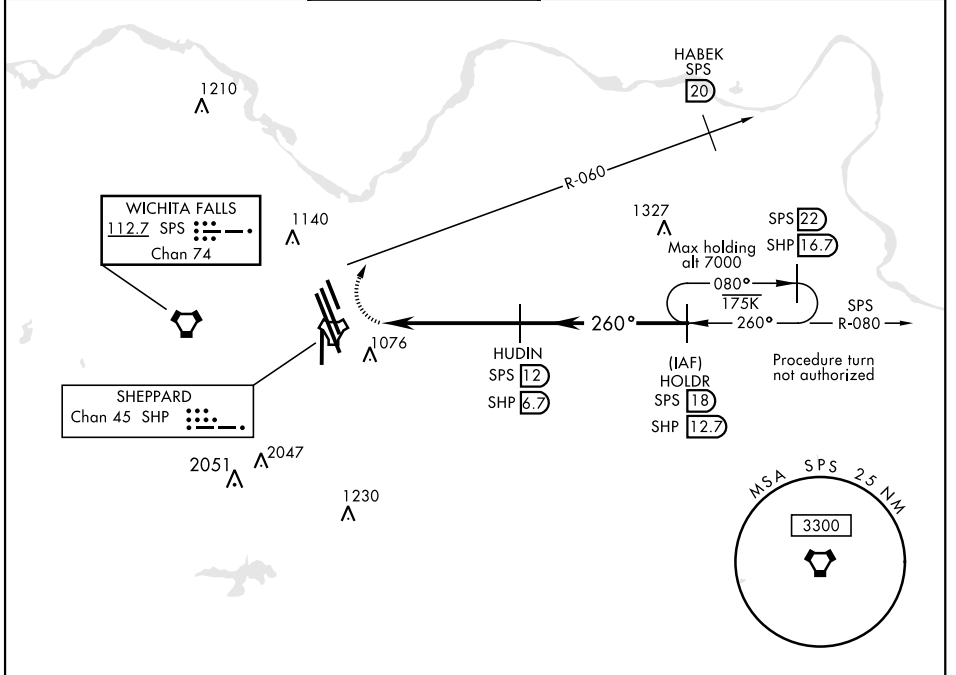
VORTAC SPS 112.7 Chan 74	APCH CRS 260°	Rwy Ildg TDZE N/A Arpt Elev 1019
--	-------------------------	---

AL-454 (USAF)

SHEPPARD AFB/WICHITA FALLS MUNI (KSPS)

⚠ * Circling not authorized W of Rwy 15R-33L. MISSED APPROACH: Climbing right turn to 3200, intcp SPS VORTAC R-060 to 20 DME (HABEK). Expect radar vectors.

ATIS ★ 132.05 269.9	SHEPPARD APP CON 118.2 269.025	SHEPPARD TOWER ★ 119.75 0 279.525 (CTAF)	GND CON 125.5 289.4	CLNC DEL 121.2 282.225	ASR
-------------------------------	--	---	-------------------------------	----------------------------------	-----

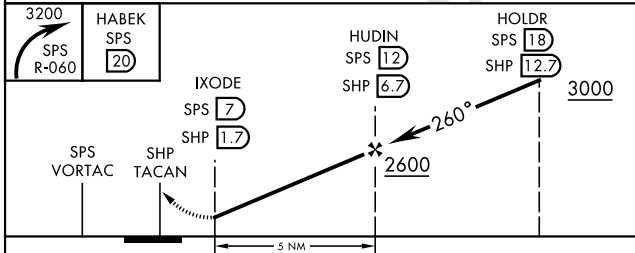


SC-2, 25 FEB 2021 to 25 MAR 2021

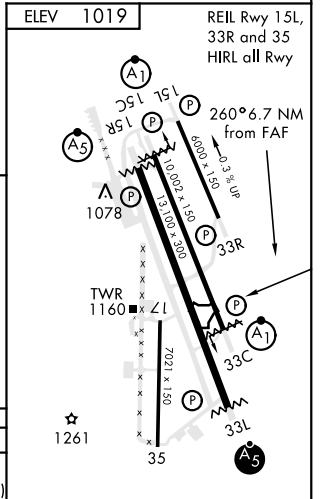
SC-2, 25 FEB 2021 to 25 MAR 2021

RADAR REQUIRED

EMERG SAFE ALT 100 NM 4600



CATEGORY	A	B	C	D	E
CIRCLING*	1440-17/8 421(500-17/8)	1480-17/8 461 (500-17/8)	2020-3 1001(1100-3)	2080-3 1061(1100-3)	



WICHITA FALLS, TEXAS

33°59'N-98°30'W

SHEPPARD AFB/WICHITA FALLS MUNI (KSPS)

Amdt 8 16JUL20

VOR/DME-E