

LOC I-SPW <b>110.9</b>	APP CRS <b>121°</b>	Rwy Idg <b>6001</b>
		TDZE <b>1339</b>
		Apt Elev <b>1339</b>

ILS or LOC RWY 12  
SPENCER MUNI (SPW)

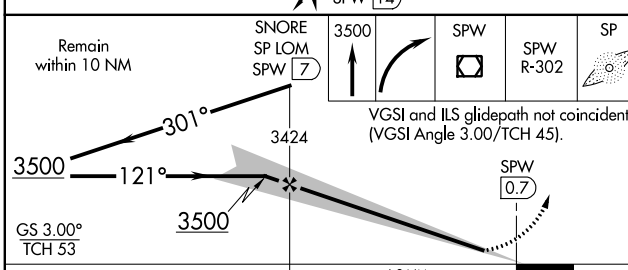
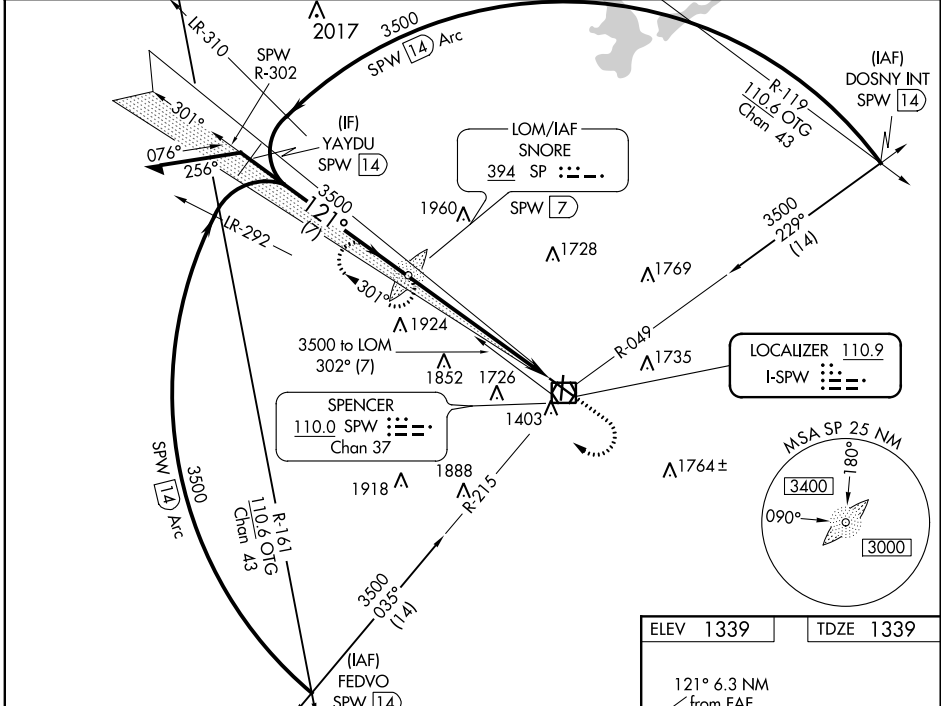
▼ For Inop ALS, increase S-LOC 12 Cats C/D visibility to 1½ SM. When local altimeter setting not received, use Estherville altimeter setting: increase DA and all MDAs 60 feet, increase visibility S-LOC 12 Cats C and D and Circling Cats C and D ½ SM. For inop ALS, when using Estherville altimeter setting, increase S-ILS 12 all Cats visibility to 1 SM and S-LOC 12 Cats C/D visibility to 1½ SM. ADF or DME required.

MALSR

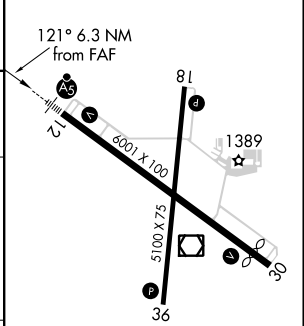


**MISSED APPROACH:** Climb to 3500 then right turn direct SPW VOR/DME, then via SPW VOR/DME R-302 to SNORE LOM/SPW VOR/DME 7 DME and hold.

<b>ASOS 126.625</b>	<b>MINNEAPOLIS CENTER 127.75 257.7</b>	<b>UNICOM 123.0 (CTAF) 0</b>
-------------------------	--------------------------------------------	----------------------------------



ELEV 1339	TDZE 1339
-----------	-----------



CATEGORY	A	B	C	D
S-ILS 12		1539-½	200 (200-½)	
S-LOC 12	1840-½	501 (600-½)	1840-1	501 (600-1)
CIRCLING	1840-1	501 (600-1)	2100-2¼ 761 (800-2¼)	2100-2½ 761 (800-2½)

REIL Rwy 18, 30 and 36					
MIRL Rwy 12-30 and 18-36					
FAF to MAP 6.3 NM					
Knots	60	90	120	150	180
Min:Sec	6:18	4:12	3:09	2:31	2:06

SPENCER MUNI (SPW)  
ILS or LOC RWY 12

NC-3, 25 FEB 2021 to 25 MAR 2021

NC-3, 25 FEB 2021 to 25 MAR 2021