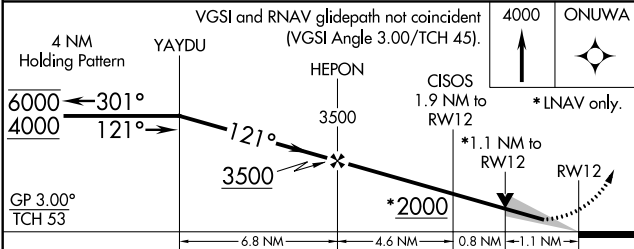
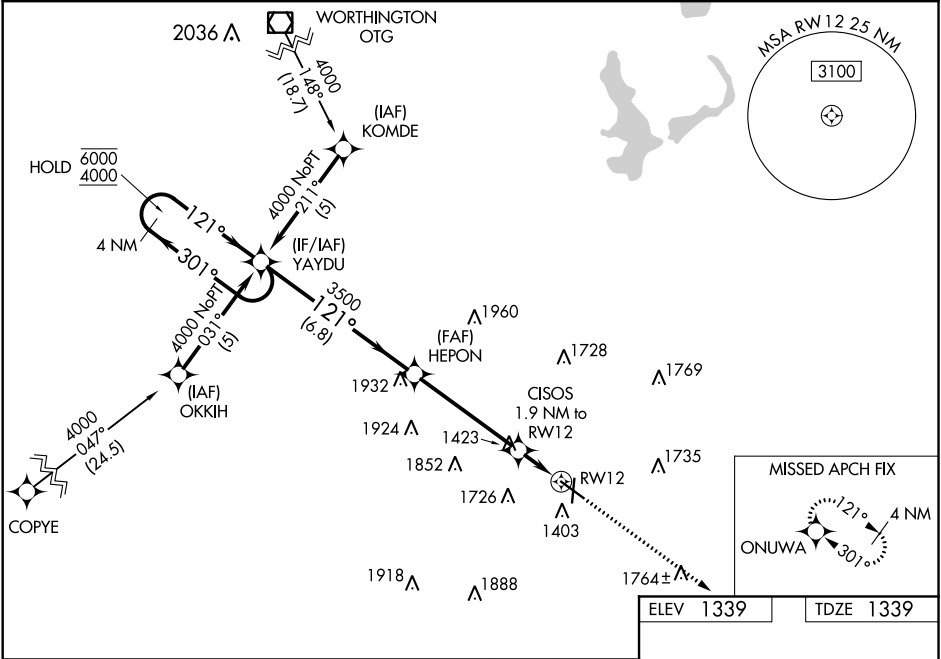


WAAS CH <b>56517</b> <b>W12A</b>	APP CRS <b>121°</b>	Rwy Idg TDZE Apt Elev	<b>6001</b> <b>1339</b> <b>1339</b>
--	------------------------	-----------------------------	---

# RNAV (GPS) RWY 12

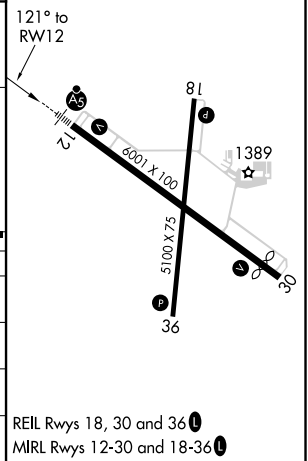
SPENCER MUNI (SPW)

RNP APCH.		MALSR	MISSED APPROACH: Climb to 4000 direct ONUWA and hold.
<p>For uncompensated Baro-VNAV systems, LNAV/VNAV NA below -17°C or above 54°C. For inop ALS, increase LNAV/VNAV all Cats visibility to 1½ SM and LNAV Cat C/D to 1½ SM.</p> <p>-32°C</p>			
ASOS <b>126.625</b>	MINNEAPOLIS CENTER <b>127.75 257.7</b>	UNICOM <b>123.0 (CTAF)</b>	



ELEV 1339	TDZE 1339
-----------	-----------

CATEGORY	A	B	C	D
LPV DA		1539-½	200 (200-½)	
LNAV/VNAV DA		1734-¾	395 (400-¾)	
LNAV MDA	1740-½	401 (500-½)	1740-¾ 401 (500-¾)	1740-1 401 (500-1)
CIRCLING	1740-1 401 (500-1)	1800-1 461 (500-1)	2100-2¼ 761 (800-2¼)	2100-2½ 761 (800-2½)



REIL Rwy 18, 30 and 36  
MRL Rwy 12-30 and 18-36

NC-3, 25 FEB 2021 to 25 MAR 2021

NC-3, 25 FEB 2021 to 25 MAR 2021