

WAAS CH <b>61333</b> <b>W18A</b>	APP CRS <b>181°</b>	Rwy Idg TDZE <b>1338</b> Apt Elev <b>1339</b>	<b>5100</b>
--	------------------------	---	-------------

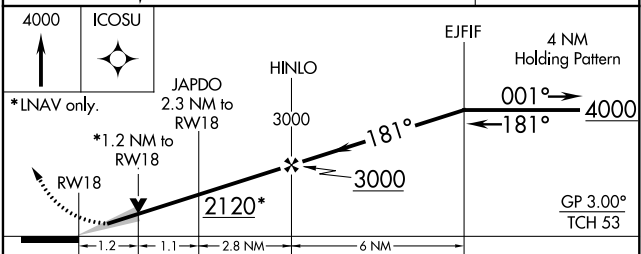
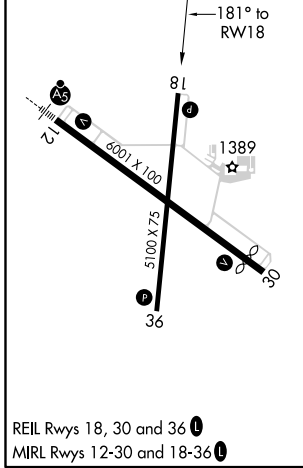
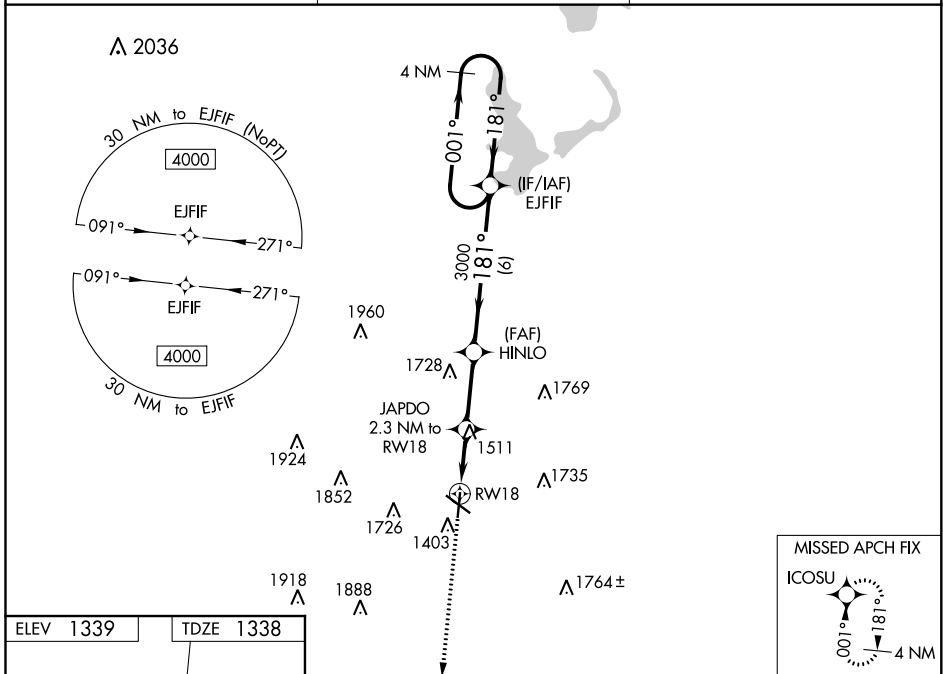
# RNAV (GPS) RWY 18

SPENCER MUNI (SPW)

**⚠** Baro-VNAV and VDP NA when using Estherville altimeter setting. For uncompensated Baro-VNAV systems, LNAV/VNAV NA below -20°C (-4°F) or above 54°C (130°F). DME/DME RNP-0.3 NA. When local altimeter setting not received, use Estherville altimeter setting and increase all DA/MDA 60 feet; increase LNAV/VNAV all Cnts visibility to 1 1/8 mile.

**MISSED APPROACH:**  
Climb to 4000 direct ICOSU and hold.

ASOS <b>126.625</b>	MINNEAPOLIS CENTER <b>127.75 257.7</b>	UNICOM <b>123.0 (CTAF)</b> <b>Ⓛ</b>
------------------------	---	--



CATEGORY	A	B	C	D
LPV DA	1588-1	250 (300-1)		NA
LNAV/VNAV DA	1608-1	270 (300-1)		NA
LNAV MDA	1780-1	442 (500-1)		NA
<b>C</b> CIRCLING	1780-1 441 (500-1)	1820-1 481 (500-1)		NA

NC-3, 25 FEB 2021 to 25 MAR 2021

NC-3, 25 FEB 2021 to 25 MAR 2021