

VOR/DME SPW <b>110.0</b> Chan <b>37</b>	APP CRS <b>292°</b>	Rwy Idg TDZE Apt Elev	<b>5501</b> <b>1338</b> <b>1339</b>
---	------------------------	-----------------------------	---

# VOR RWY 30

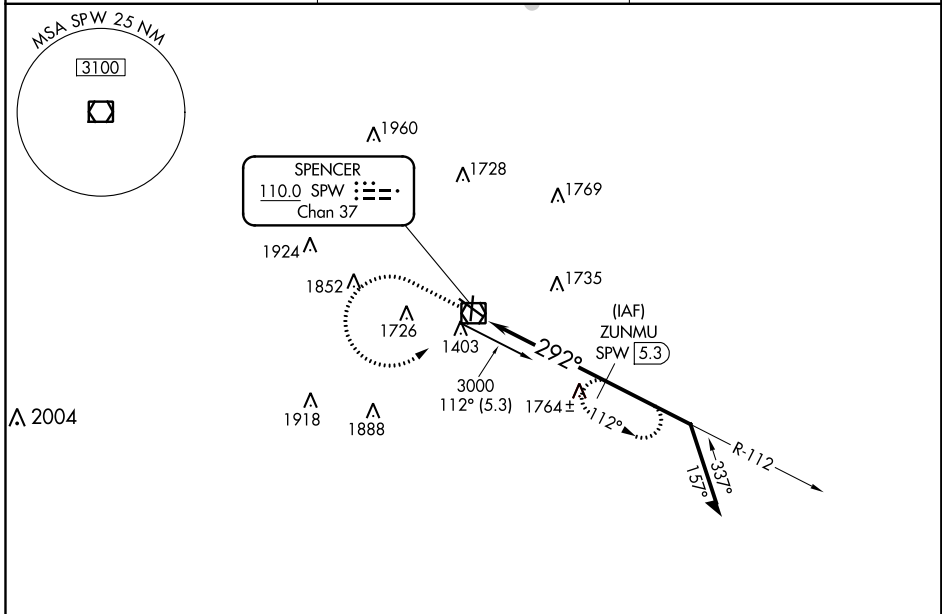
SPENCER MUNI (SPW)

DME required.

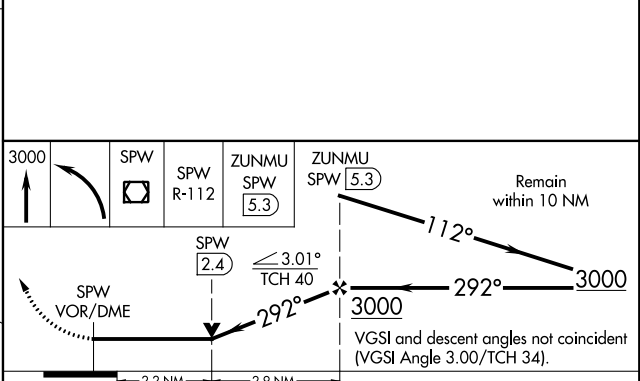
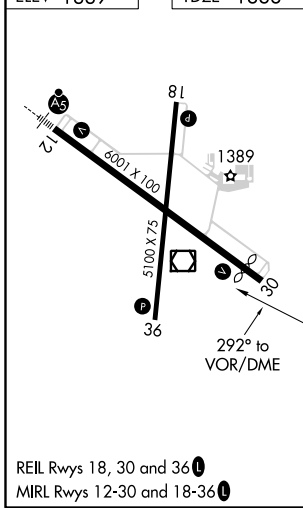
VDP NA when using Estherville altimeter setting.  
When local altimeter setting not received, use Estherville altimeter setting and increase all MDA 60 feet and increase S-30 Cat C/D visibility  $\frac{1}{2}$  SM and Circling Cat C/D visibility  $\frac{1}{4}$  SM.

MISSED APPROACH: Climb to 3000, then left turn direct SPW VOR/DME, then on SPW VOR/DME R-112 to ZUNMU/SPW 5.3 DME and hold.

ASOS <b>126.625</b>	MINNEAPOLIS CENTER <b>127.75 257.7</b>	UNICOM <b>123.0 (CTAF) 0</b>
------------------------	---	---------------------------------



ELEV 1339	TDZE 1338
-----------	-----------



CATEGORY	A	B	C	D
S-30	2080-1 742 (800-1)	2080-1¼ 742 (800-1¼)	2080-2	742 (800-2)
CIRCLING	2080-1 741 (800-1)	2080-1¼ 741 (800-1¼)	2100-2¼ 761 (800-2¼)	2100-2½ 761 (800-2½)

NC-3, 25 FEB 2021 to 25 MAR 2021

NC-3, 25 FEB 2021 to 25 MAR 2021