

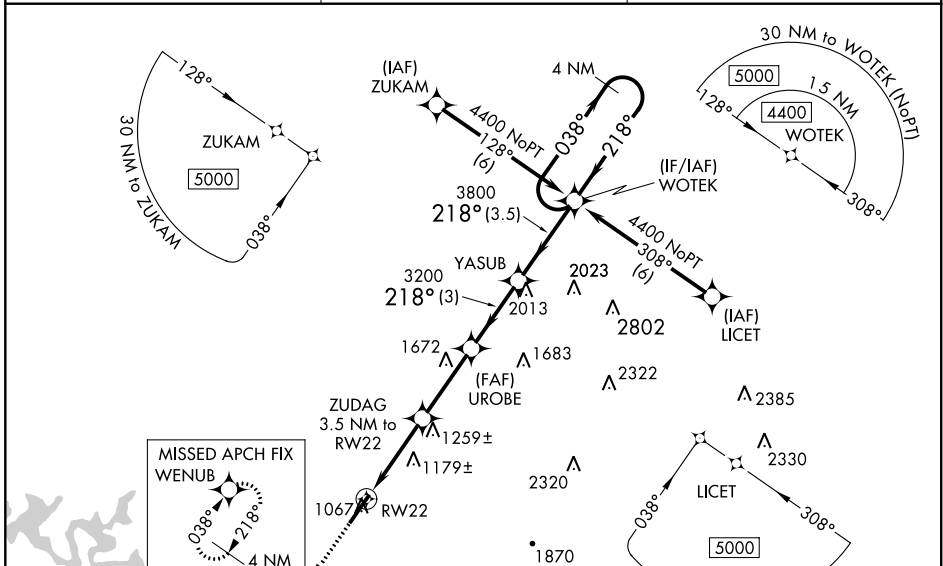
WAAS CH 82311 W22A	APP CRS 218°	Rwy Idg TDZE Apt Elev	6000 1025 1025
--	------------------------	-----------------------------	---

RNAV (GPS) RWY 22
UPPER CUMBERLAND RGNL (SR.B)

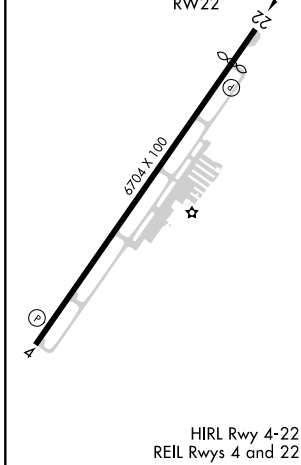
⚠ Baro-VNAV NA when using Crossville altimeter setting. For uncompensated Baro-VNAV NA systems, LNAV/VNAV NA below -17°C (2°F) or above 54°C (130°F). DME/DME RNP-0.3 NA. When local altimeter setting not received, use Crossville altimeter setting and increase LPV DA to 1447, LNAV/VNAV DA to 1633. Increase LPV and LNAV/VNAV visibility 3/4 mile. Increase all MDA 180 feet and LNAV Cat C visibility 1/4 mile, Cat D 1/2 mile. Increase Circling Cat C/D visibility 1/4 mile. VDP NA when using Crossville altimeter setting.

MISSED APPROACH: Climb to 4000 direct WENUB and hold.

AWOS-3 128.25	MEMPHIS CENTER 132.9 290.3	UNICOM 122.975 (CTAF)
-------------------------	--------------------------------------	---------------------------------



ELEV 1025	D	TDZE 1025
-----------	----------	-----------



4000	WENUB	VGSI and RNAV glidepath not coincident (VGSI Angle 3.00/TCH 25).		4 NM
		WOTEK	Holding Pattern	
*LNAV only	ZUDAG 3.5 NM to RW22	UROBE 3200	YASUB	038° → 4400
	*1.2 NM to RW22	*2200	3800	← 218°
			3200	GP 3.00° TCH 55
	1.2 NM	2.3 NM	3 NM	3 NM
CATEGORY	A	B	C	D
LPV DA	1275-3/4		250 (300-3/4)	
LNAV/VNAV DA	1461-1 1/2		436 (500-1 1/2)	
LNAV MDA	1440-1	415 (500-1)	1440-1 1/4	415 (500-1 1/4)
CIRCLING	1480-1	455 (500-1)	1480-1 1/2	1580-2
			455 (500-1 1/2)	555 (600-2)

SE-1, 25 FEB 2021 to 25 MAR 2021

SE-1, 25 FEB 2021 to 25 MAR 2021