

WAAS CH <b>81824</b> <b>W01A</b>	APP CRS <b>011°</b>	Rwy Idg TDZE <b>253</b> Apt Elev <b>265</b>	<b>6008</b>
--	------------------------	---	-------------

# RNAV (GPS) RWY 1

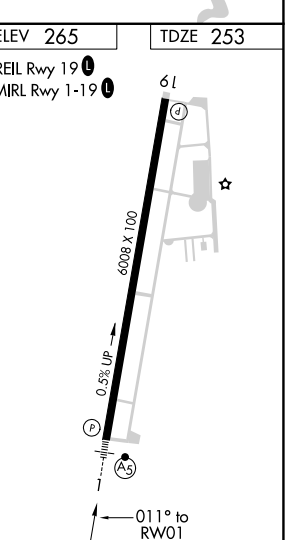
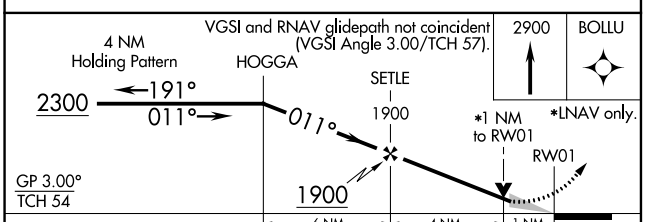
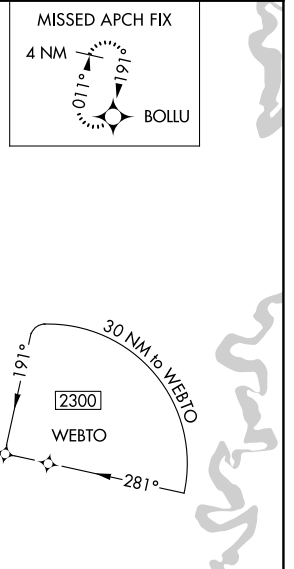
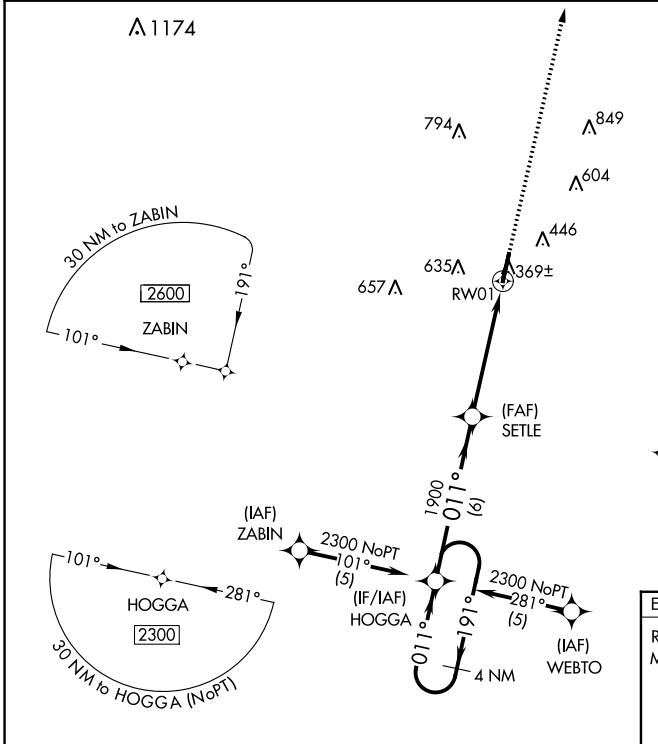
SEARCY MUNI (SRC)

**⚠** Circling NA for Cat C west of Rwy 1-19. DME/DME RNP-0.3 NA. VDP NA with Little Rock Bill and Hillary Clinton National/Adams Field altimeter setting. When local altimeter setting not received, use Little Rock Bill and Hillary Clinton National/Adams Field altimeter setting and increase all DA 87 feet and all MDA 100 feet, increase LPV all Cats and LNAV Cat C visibility ¼ mile. For inoperative MALSAR, increase LPV all Cats visibility to 1 ½ mile. For inoperative MALSAR, when using Little Rock Bill and Hillary Clinton National/Adams Field altimeter setting, increase LPV all Cats visibility to 1 ½ mile.

**MALSAR**  
AS

**MISSED APPROACH:**  
Climb to 2900 direct BOLLU and hold.

AWOS-3PT <b>128.325</b>	LITTLE ROCK APP CON <b>119.75 291.775</b>	CLNC DEL <b>119.75</b>	UNICOM <b>122.7 (CTAF)</b>
----------------------------	--	---------------------------	-------------------------------



CATEGORY	A	B	C	D
LPV DA	573-¾	320 (400-¾)		NA
LNAV MDA	620-½	367 (400-½)		NA
CIRCLING	760-1	495 (500-1)	760-1½ 495 (500-1½)	NA

SC-1, 25 FEB 2021 to 25 MAR 2021

SC-1, 25 FEB 2021 to 25 MAR 2021