


# ILS or LOC RWY 14

SARASOTA/BRADENTON INTL (SRQ)

LOC I-FFV <b>111.3</b>	APP CRS <b>139°</b>	Rwy Idg <b>7540</b> TDZE <b>23</b> Apt Elev <b>30</b>
---------------------------	------------------------	-------------------------------------------------------------

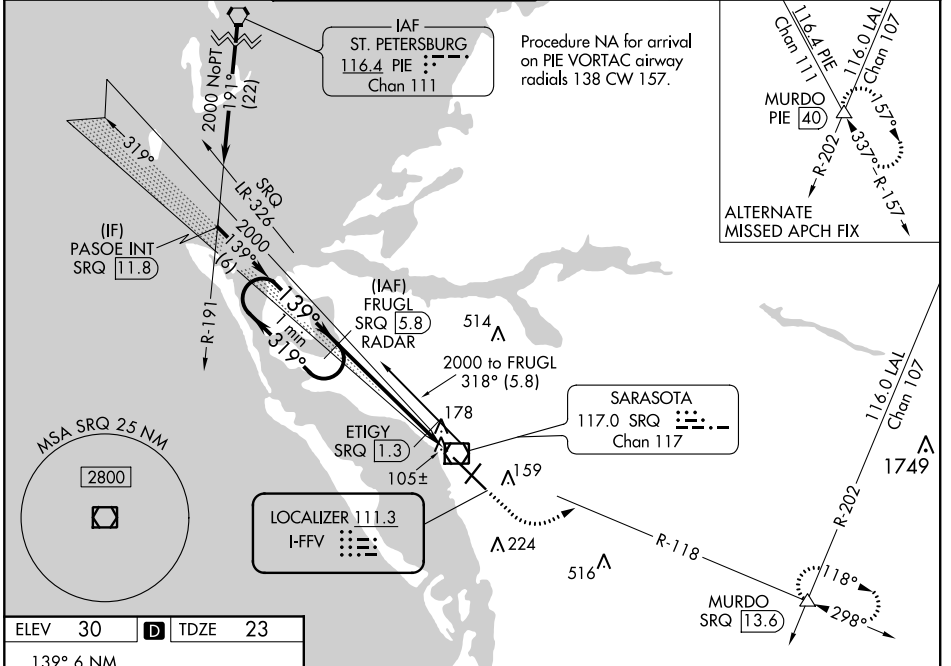
DME or RADAR required for LOC only.

When control tower closed, S-ILS 14 Minimums NA; increase S-LOC 14 Cats A and B and ETIGY Fix Minimums S-LOC 14 all Cats visibility to 1 mile. When control tower closed, inop table does not apply to S-LOC 14 Cats A and B and ETIGY Fix Minimums S-LOC 14 all Cats.

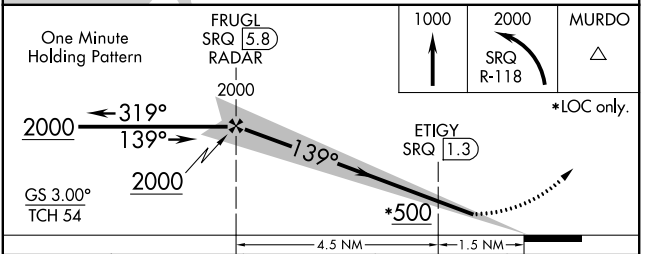
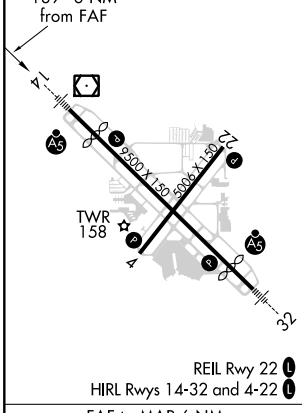
MALSR 

MISSED APPROACH: Climb to 1000 then climbing left turn to 2000 on SRQ VOR/DME R-118 to MURDO INT/SRQ 13.6 DME and hold.

ATIS <b>124.375</b>	TAMPA APP CON <b>119.65 353.575</b>	SARASOTA TOWER ★ <b>120.1(CTAF) 0 256.8</b>	GND CON <b>121.9 273.6</b>	CLNC DEL <b>118.25</b>	UNICOM <b>122.95</b>
------------------------	----------------------------------------	------------------------------------------------	-------------------------------	---------------------------	-------------------------



ELEV 30	<b>D</b>	TDZE 23
---------	----------	---------



CATEGORY	A	B	C	D
S-ILS 14	223-½ 200 (200-½)			
S-LOC 14	500-½	477 (500-½)	500-1	477 (500-1)
CIRCLING	500-1	470 (500-1)	500-1½ 470 (500-½)	580-2 550 (600-2)
ETIGY FIX MINIMUMS				
S-LOC 14	360-½ 337 (400-½)			
CIRCLING	500-1	470 (500-1)	500-1½ 470 (500-½)	580-2 550 (600-2)

SE-3, 25 FEB 2021 to 25 MAR 2021

SE-3, 25 FEB 2021 to 25 MAR 2021