

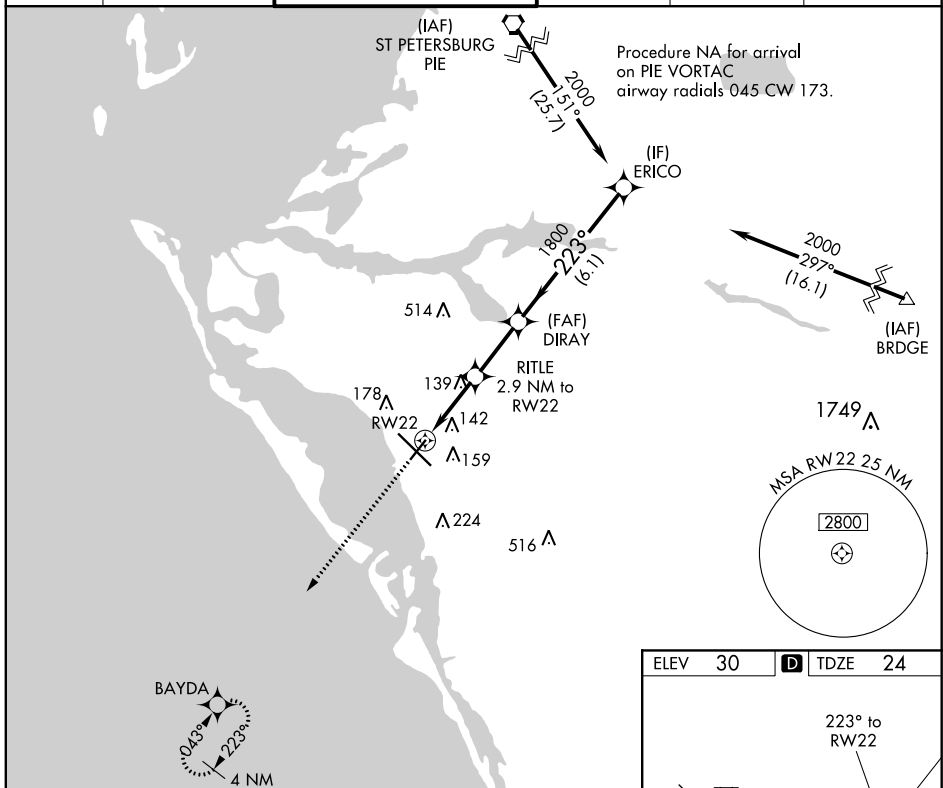
APP CRS	Rwy Idg	<b>5006</b>
<b>223°</b>	TDZE	<b>24</b>
	Apt Elev	<b>30</b>

# RNAV (GPS) RWY 22

SARASOTA/BRADENTON INTL (SRQ)

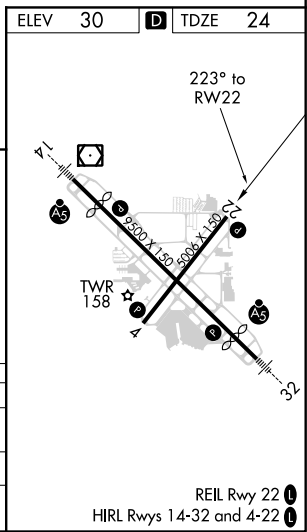
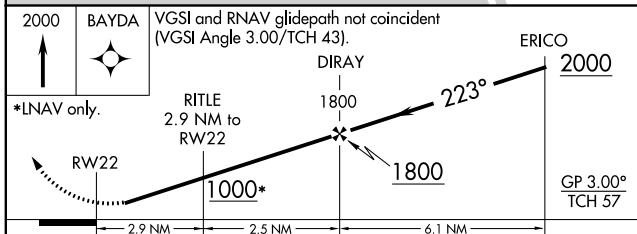
RNP APCH.		MISSED APPROACH: Climb to 2000 direct BAYDA and hold.	
<p><b>▼</b> Rwy 22 helicopter visibility reduction below 1 SM NA. For uncompensated Baro-VNAV systems, LNAV/VNAV NA below -15°C or above 43°C.</p>			

ATIS <b>124.375</b>	TAMPA APP CON <b>119.65 353.575</b>	SARASOTA TOWER★ <b>120.1(CTAF) 256.8</b>	GND CON <b>121.9 273.6</b>	CLNC DEL <b>118.25</b>	UNICOM <b>122.95</b>
------------------------	--	---	-------------------------------	---------------------------	-------------------------



SE-3, 25 FEB 2021 to 25 MAR 2021

SE-3, 25 FEB 2021 to 25 MAR 2021



CATEGORY	A	B	C	D
LNAV/VNAV DA		303-1	279 (300-1)	
LNAV MDA		400-1	376 (400-1)	
CIRCLING	500-1	470 (500-1)	500-1½ 470 (500-1½)	580-2 550 (600-2)