

# HI-TACAN Z RWY 4L

TACAN SSC Chan <b>38</b>	APCH CRS <b>043°</b>	Rwy Idg <b>10,014</b>	4R <b>8014</b>
		TDZE <b>240</b>	<b>236</b>
		Arprt Elev <b>241</b>	<b>241</b>

JAL-409 [USAF]

SHAW AFB (KSSC)

ALSIF-1
 


 MISSED APPROACH: Climbing to 2000, intercept SSC TACAN R-042 to GABLE and hold.

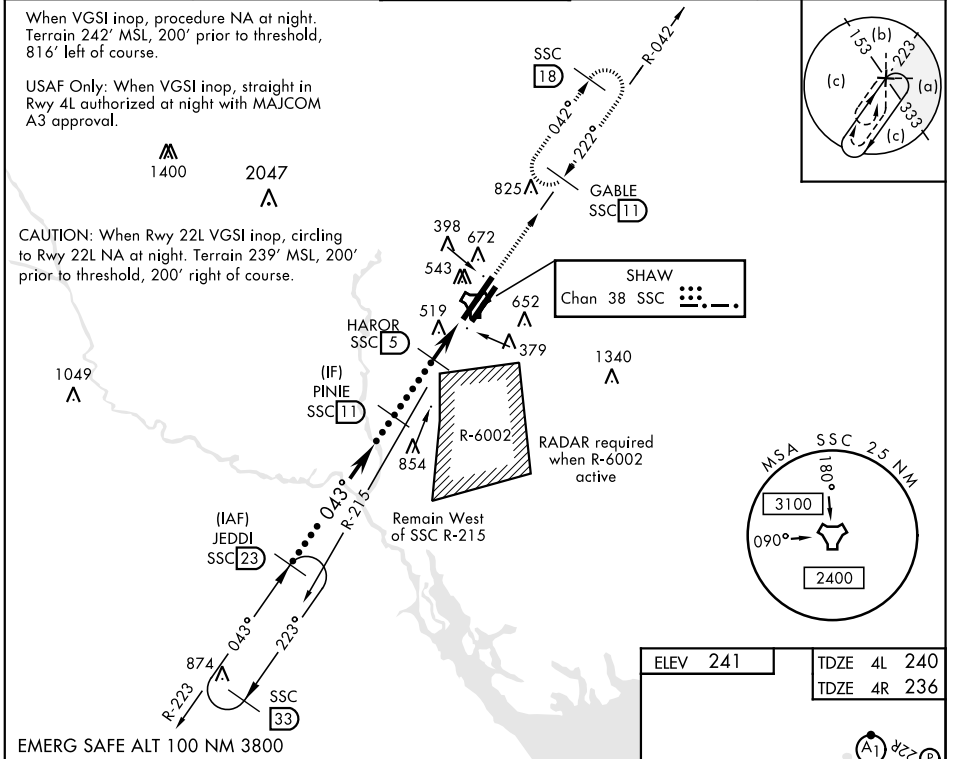
\* When ALS inop, increase vis to 1 1/2 miles.

ATIS ★ <b>132.125 270.1</b>	SHAW APP CON <b>125.4 318.1</b>	SHAW TOWER ★ <b>126.65 254.25</b>	GND CON <b>126.1 275.8</b>	CLNC DEL <b>126.1 275.8</b>
--------------------------------	------------------------------------	--------------------------------------	-------------------------------	--------------------------------

When VGSI inop, procedure NA at night. Terrain 242' MSL, 200' prior to threshold, 816' left of course.

USAF Only: When VGSI inop, straight in Rwy 4L authorized at night with MAJCOM A3 approval.

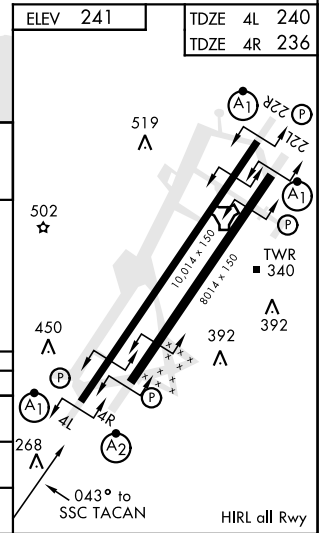
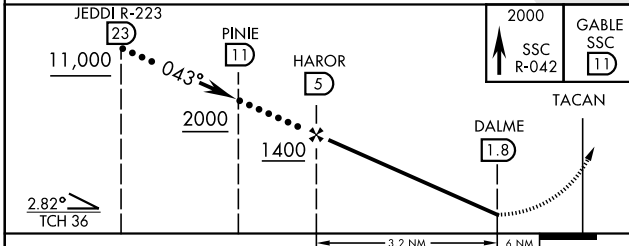
CAUTION: When Rwy 22L VGSI inop, circling to Rwy 22L NA at night. Terrain 239' MSL, 200' prior to threshold, 200' right of course.



SE-2, 25 FEB 2021 to 25 MAR 2021

SE-2, 25 FEB 2021 to 25 MAR 2021

EMERG SAFE ALT 100 NM 3800



ELEV 241	TDZE 4L 240	TDZE 4R 236	
CATEGORY	C	D	E
S-4L *	800/60	560 (600-1 1/2)	
SIDESTEP 4R *	800-1 1/8	564 (600-1 1/8)	
CIRCLING	1000-2 1/4 759 (800-2 1/4)	1000-2 1/2 759 (800-2 1/2)	1000-2 3/4 759 (800-2 3/4)

# HI-TACAN Z RWY 4L