

APP CRS	Rwy Idg	<b>3500</b>
<b>316°</b>	TDZE	<b>1233</b>
	Apt Elev	<b>1233</b>

# RNAV (GPS) RWY 32

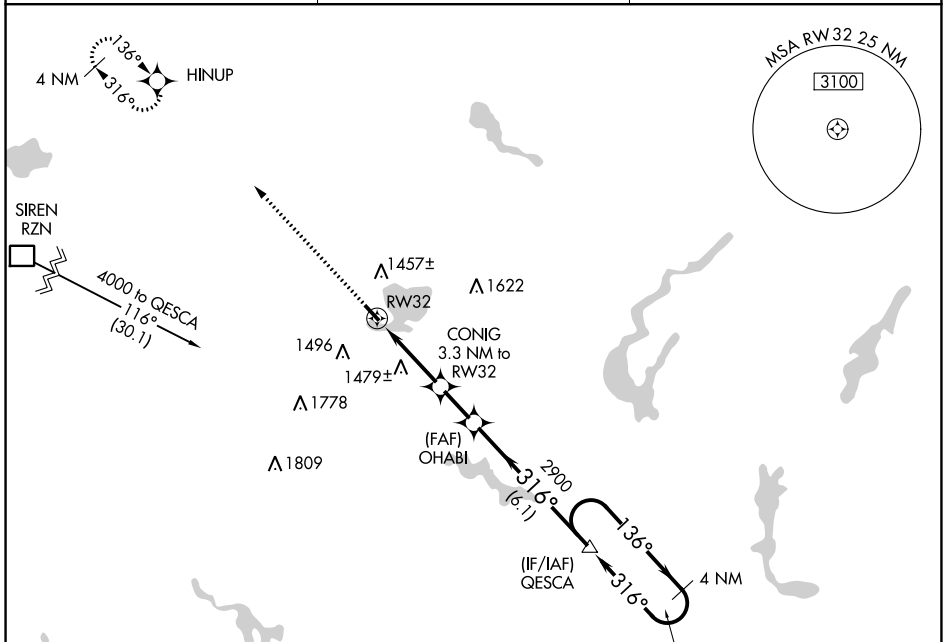
SHELL LAKE MUNI (SSQ)

RNP APCH.

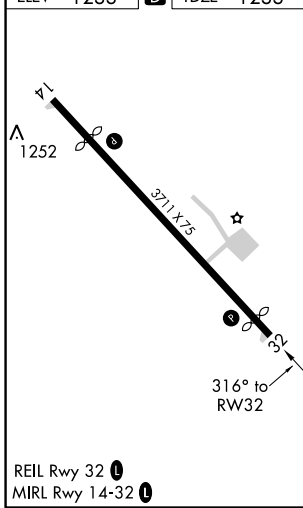
**▼** Procedure NA at night. Rwy 32 helicopter visibility reduction below 1 SM NA.  
**▲ NA** Use Cumberland altimeter setting.

MISSED APPROACH: Climb to 4000 direct HINUP and hold.

UBE AWOS-3PT <b>119.175</b>	MINNEAPOLIS CENTER <b>126.45 276.4</b>	UNICOM <b>122.8 (CTAF) 0</b>
--------------------------------	---	---------------------------------



ELEV 1233	<b>D</b>	TDZE 1233
-----------	----------	-----------



4000 HINUP	VGSI and descent angles not coincident (VGSI Angle 3.00/TCH 23).			
CONIG 3.3 NM to RWY 32	OHABI	QESCA	4 NM Holding Pattern	
RWY 32	2320	2900	6000/4000	
3.3 NM	1.8 NM	6.1 NM		
CATEGORY	A	B	C	D
LNAV MDA	1800-1	567 (600-1)	1800-1½ 567 (600-1½)	1800-1¾ 567 (600-1¾)
CIRCLING	1840-1	607 (700-1)	1840-1¾ 607 (700-1¾)	1860-2 627 (700-2)

EC-3, 25 FEB 2021 to 25 MAR 2021

EC-3, 25 FEB 2021 to 25 MAR 2021