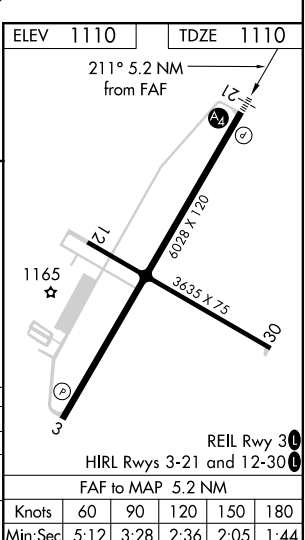
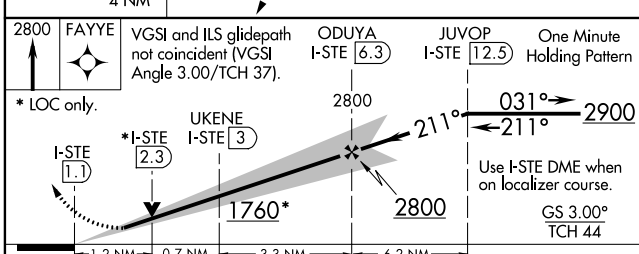
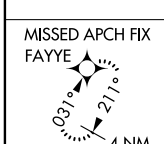
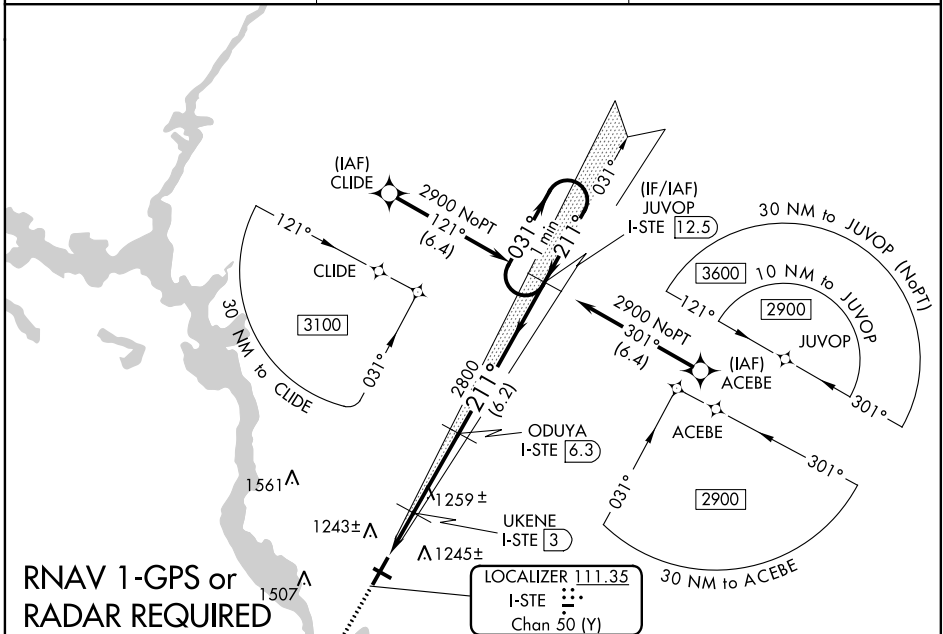


LOC/DME I-STE	APP CRS	Rwy Idg	6028
111.35	211°	TDZE	1110
Chan 50(Y)		Apt Elev	1110

ILS or LOC RWY 21
STEVENS POINT MUNI (STE)

<p>▽ DME required. RNAV 1-GPS required. For inoperative ALS, increase S-LOC 21 Cat C/D visibility to 1/8 SM. Inoperative table does not apply to S-ILS 21 all Cats.</p> <p>▲ NA</p>	<p>MALS</p> <p>⊖</p> <p>⊕</p>	<p>MISSED APPROACH: Climb to 2800 direct FAYYE and hold.</p>
<p>AWOS-3</p> <p>119.275</p>	<p>MINNEAPOLIS CENTER</p> <p>124.4 317.7</p>	<p>UNICOM</p> <p>122.7 (CTAF) 0</p>



CATEGORY	A	B	C	D
S-ILS 21		1360-3/4	250 (300-3/4)	
S-LOC 21	1520-3/4	410 (500-3/4)	1520-1	410 (500-1)
C CIRCLING	1580-1 470 (500-1)	1600-1 490 (500-1)	1820-2 710 (800-2)	1820-2 1/4 710 (800-2 1/4)

Knots	60	90	120	150	180
Min:Sec	5:12	3:28	2:36	2:05	1:44

EC-3, 25 FEB 2021 to 25 MAR 2021

EC-3, 25 FEB 2021 to 25 MAR 2021