

APP CRS	Rwy Idg	<b>3635</b>
<b>121°</b>	TDZE	<b>1108</b>
	Apt Elev	<b>1110</b>

# RNAV (GPS) RWY 12

STEVENS POINT MUNI (STE)

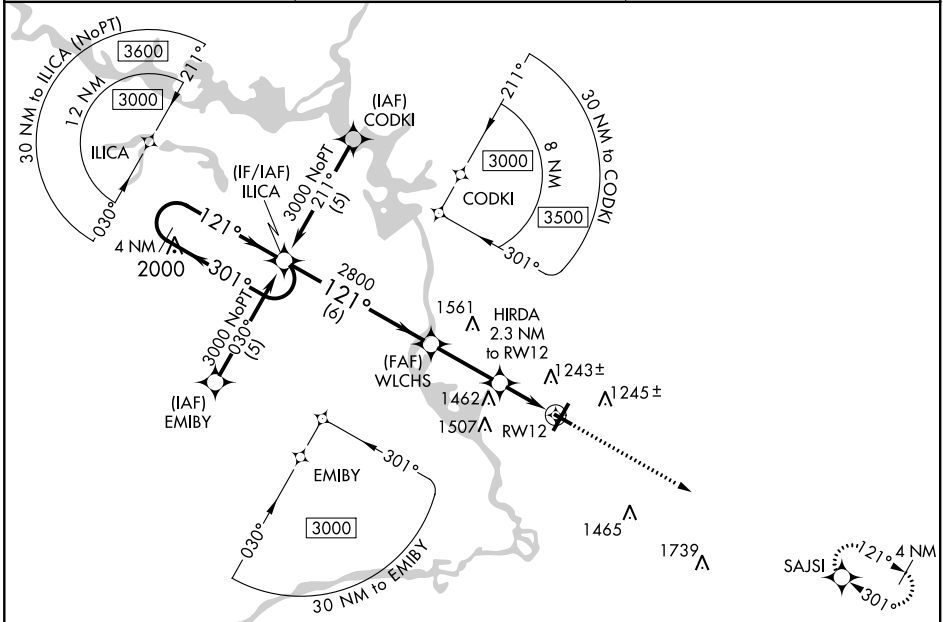
**⚠** DME/DME RNP-0.3 NA. Rwy 12 helicopter visibility reduction below ¼ SM NA. When local altimeter setting not received, use Mosinee altimeter setting and increase all MDA 60 feet, increase LNAV Cat C and D visibility ¼ mile and Circling Cat C and D visibility ½ mile. VDP NA when using Mosinee altimeter setting.

**MISSED APPROACH:** Climb to 3000 direct SAJSI and hold.

AWOS-3  
**119.275**

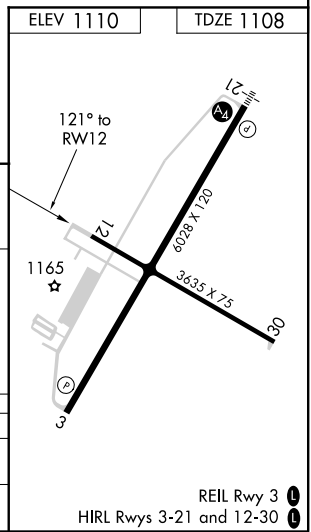
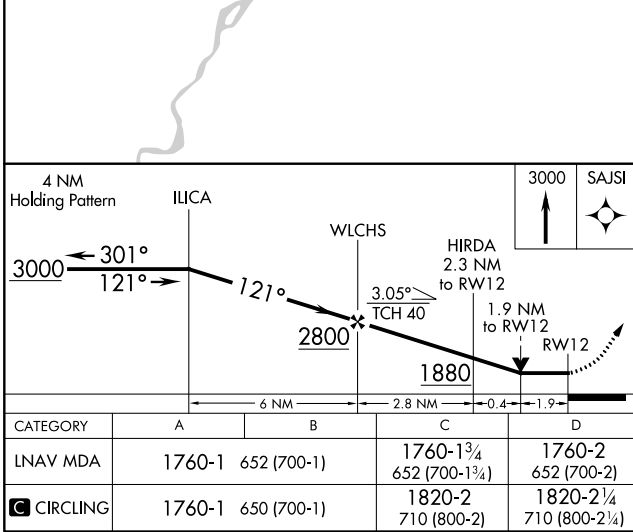
MINNEAPOLIS CENTER  
**124.4 317.7**

UNICOM  
**122.7 (CTAF) 0**



EC-3, 25 FEB 2021 to 25 MAR 2021

EC-3, 25 FEB 2021 to 25 MAR 2021



CATEGORY	A	B	C	D
LNAV MDA	1760-1	652 (700-1)	1760-1¼ 652 (700-1¼)	1760-2 652 (700-2)
<b>C</b> CIRCLING	1760-1	650 (700-1)	1820-2 710 (800-2)	1820-2¼ 710 (800-2¼)

REIL Rwy 3 0  
HIRL Rwy 3-21 and 12-30 0