

WAAS CH 86511 W21A	APP CRS 211°	Rwy Idg TDZE 1110 Apt Elev 1110	6028
--	------------------------	---	-------------

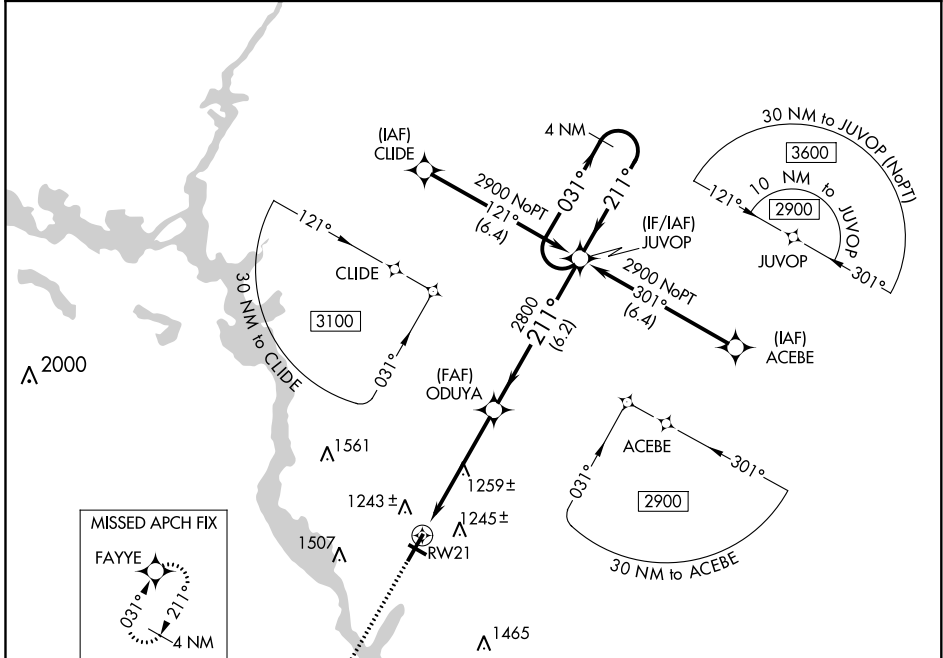
RNAV (GPS) RWY 21

STEVENS POINT MUNI (STE)

⚠ For uncompensated Baro-VNAV systems, LNAV/VNAV NA below -17°C (2°F) or above 54°C (130°F). DME/DME RNP-0.3 NA. Inoperative table does not apply to LPV all Cats. For inoperative ALS, increase LNAV Cat C and D visibility to 1½ SM.

MALS $\frac{A_2}{A_1} =$ **MISSED APPROACH:** Climb to 2800 direct FAYYE and hold.

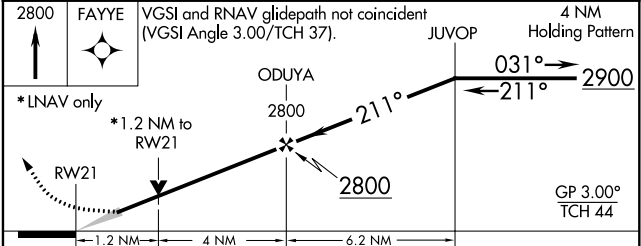
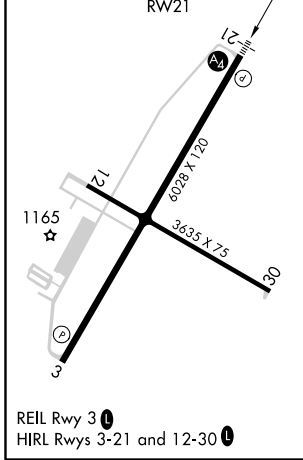
AWOS-3 119.275	MINNEAPOLIS CENTER 124.4 317.7	UNICOM 122.7 (CTAF) 0
--------------------------	--	---------------------------------



EC-3, 25 FEB 2021 to 25 MAR 2021

EC-3, 25 FEB 2021 to 25 MAR 2021

ELEV 1110	TDZE 1110
-----------	-----------



CATEGORY	A	B	C	D
LPV DA		1360-¾	250 (300-¾)	
LNAV/VNAV DA		1457-7/8	347 (400-7/8)	
LNAV MDA	1520-¾	410 (500-¾)	1520-1	410 (500-1)
C CIRCLING	1580-1 470 (500-1)	1600-1 490 (500-1)	1820-2 710 (800-2)	1820-2¼ 710 (800-2¼)