

APP CRS	Rwy Idg	3635
301°	TDZE	1108
	Apt Elev	1110

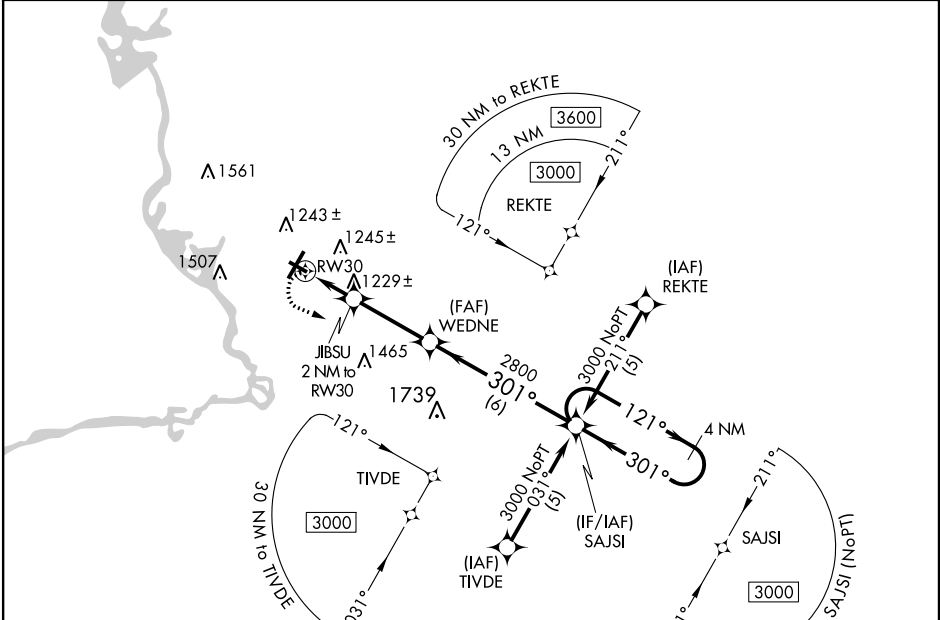
RNAV (GPS) RWY 30

STEVENS POINT MUNI (STE)

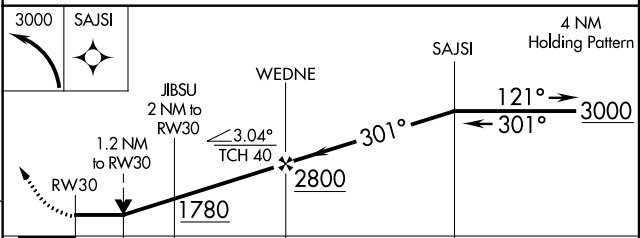
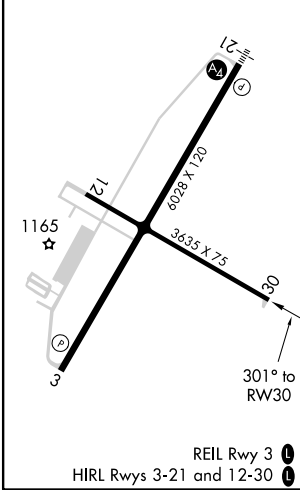
⚠ DME/DME RNP-0.3 NA. Rwy 30 helicopter visibility reduction below 3/4 SM NA.
⚠ When local altimeter setting not received, use Mosinee altimeter setting and increase all MDA 60 feet, increase LNAV Cat D visibility 1/4 mile and Circling Cat C and D visibility 1/4 mile. VDP NA when using Mosinee altimeter setting.

MISSED APPROACH: Climbing left turn to 3000 direct SAJSI and hold.

AWOS-3 119.275	MINNEAPOLIS CENTER 124.4 317.7	UNICOM 122.7 (CTAF) 0
--------------------------	--	---------------------------------



ELEV 1110	TDZE 1108
-----------	-----------



CATEGORY	A	B	C	D
LNAV MDA	1520-1	412 (500-1)	1520-1 1/4	412 (500-1 1/4)
C CIRCLING	1580-1 470 (500-1)	1600-1 490 (500-1)	1820-2 710 (800-2)	1820-2 1/4 710 (800-2 1/4)

EC-3, 25 FEB 2021 to 25 MAR 2021

EC-3, 25 FEB 2021 to 25 MAR 2021