

(BERYY5.BERYY) 18312

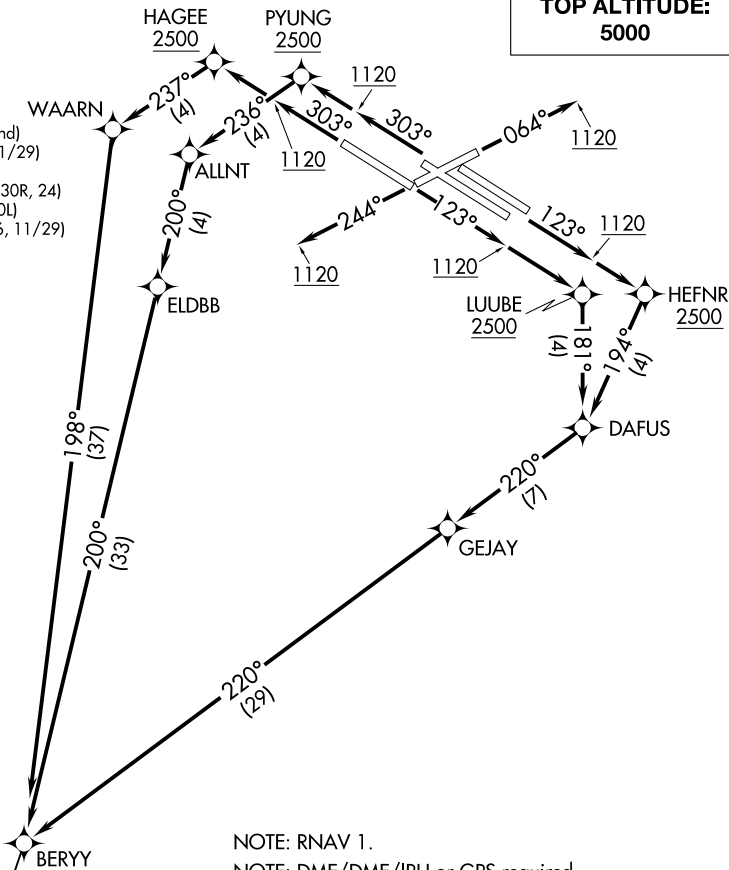
# BERYY FIVE DEPARTURE (RNAV)

ST LOUIS LAMBERT INTL (STL)  
ST. LOUIS, MISSOURI

AL-360 (FAA)

**TOP ALTITUDE:  
5000**

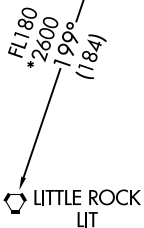
D-ATIS  
125.025 379.925  
CLNC DEL  
119.5 363.1  
CPDLC  
GND CON  
121.9 348.6 (Inbound)  
121.65 377.175 (Outbound)  
118.925 227.125 (Rwy 11/29)  
ST. LOUIS TOWER  
120.05 284.6 (Rwys 12L/30R, 24)  
118.5 257.7 (Rwy 12R/30L)  
132.475 239.275 (Rwys 6, 11/29)  
ST. LOUIS DEP CON  
128.1 307.05



- NOTE: RNAV 1.
- NOTE: DME/DME/IRU or GPS required.
- NOTE: RADAR required.
- NOTE: For use by turbojet aircraft only.

### TAKEOFF MINIMUMS

- Rwys 6, 24: Standard with minimum climb of 500' per NM to 1120 then minimum climb of 280' per NM to 5000.
- Rwy 11: Standard with minimum climb of 500' per NM to LUUBE.
- Rwys 12L/R: Standard with minimum climb of 500' per NM to HEFN.
- Rwy 29: Standard with minimum climb of 500' per NM to HAGEE.
- Rwys 30L/R: Standard with minimum climb of 500' per NM to PYUNG.



(NARRATIVE ON FOLLOWING PAGE)

NOTE: Chart not to scale.

# BERYY FIVE DEPARTURE (RNAV)

(BERYY5.BERYY) 19JUL18

ST. LOUIS, MISSOURI  
ST LOUIS LAMBERT INTL (STL)

NC-3, 25 FEB 2021 to 25 MAR 2021

NC-3, 25 FEB 2021 to 25 MAR 2021