

(CHUUC5.CHUUC) 18312

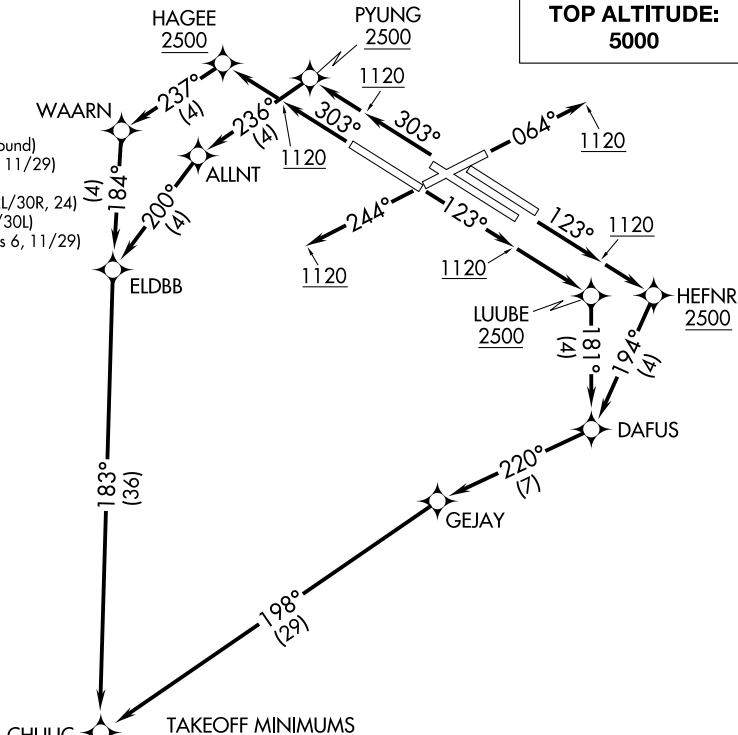
# CHUUC FIVE DEPARTURE (RNAV)

ST LOUIS LAMBERT INTL (STL)  
ST. LOUIS, MISSOURI

AL-360 (FAA)

D-ATIS  
125.025 379.925  
CLNC DEL  
119.5 363.1  
CPDLC  
GND CON  
121.9 348.6 (Inbound)  
121.65 377.175 (Outbound)  
118.925 227.125 (Rwy 11/29)  
ST. LOUIS TOWER  
120.05 284.6 (Rwys 12L/30R, 24)  
118.5 257.7 (Rwy 12R/30L)  
132.475 239.275 (Rwys 6, 11/29)  
ST. LOUIS DEP CON  
128.1 307.05

**TOP ALTITUDE:  
5000**



### TAKEOFF MINIMUMS

Rwy 6: Standard with minimum climb of 500' per NM to 1120 then minimum climb of 240' per NM to 5000.

Rwy 24: Standard with minimum climb of 500' per NM to 1120 then minimum climb of 260' per NM to 5000.

Rwy 11: Standard with minimum climb of 500' per NM to LUUBE.

Rwys 12L/R: Standard with minimum climb of 500' per NM to HEFNR.

Rwy 29: Standard with minimum climb of 500' per NM to HAGEE.

Rwys 30L/R: Standard with minimum climb of 500' per NM to PYUNG.

- NOTE: RNAV 1.
- NOTE: DME/DME/IRU or GPS required.
- NOTE: RADAR required.
- NOTE: For use by turbojet aircraft only.

(NARRATIVE ON FOLLOWING PAGE)

NOTE: Chart not to scale.

# CHUUC FIVE DEPARTURE (RNAV)

(CHUUC5.CHUUC) 19JUL18

ST. LOUIS, MISSOURI  
ST LOUIS LAMBERT INTL (STL)

NC-3, 25 FEB 2021 to 25 MAR 2021

NC-3, 25 FEB 2021 to 25 MAR 2021