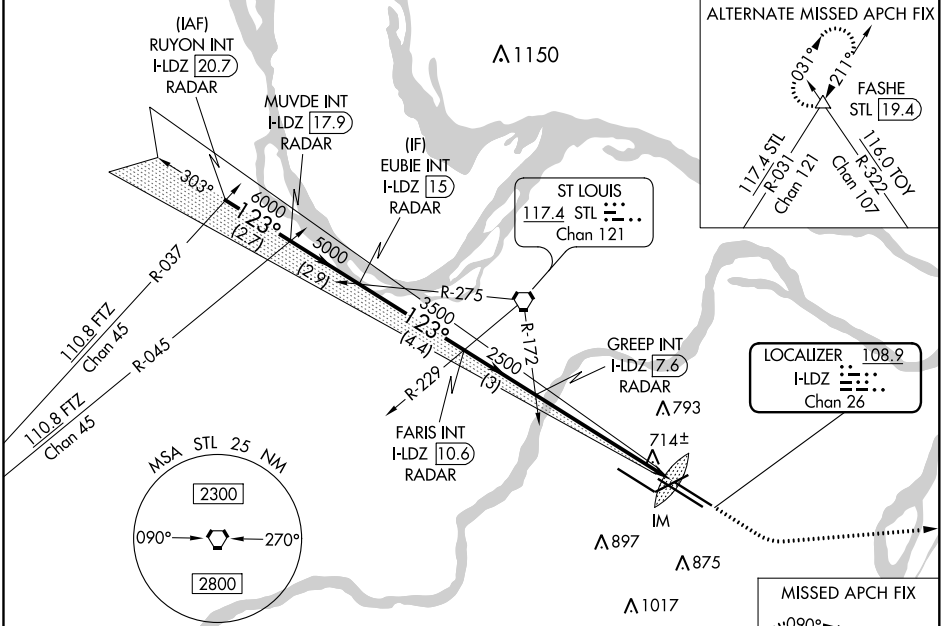


LOC/DME I-LDZ <b>108.9</b> Chan 26	APP CRS <b>123°</b>	Rwy Idg TDZE Apt Elev	<b>9003</b> <b>541</b> <b>618</b>
--	------------------------	-----------------------------	---

# ILS RWY 12L (CAT II & III)

ST LOUIS LAMBERT INTL (STL)

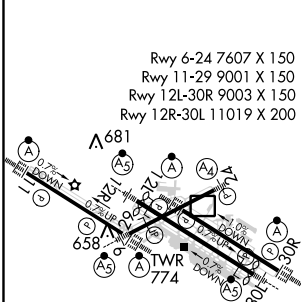
D-ATIS <b>125.025</b> <b>379.925</b>	ST. LOUIS APP CON <b>132.125 360.6</b>	ST. LOUIS TOWER <b>120.05 284.6</b>	GND CON <b>121.9 348.6</b> (Inbound)	CLNC DEL <b>119.5 363.1</b>	CPDLC
			<b>121.65 377.175</b> (Outbound)		



NC-3, 25 FEB 2021 to 25 MAR 2021

NC-3, 25 FEB 2021 to 25 MAR 2021

ELEV 618	D	TDZE 541
----------	---	----------



## RADAR and DME REQUIRED

RUYON INT I-LDZ 20.7 RADAR	MUVDE INT I-LDZ 17.9 RADAR	EUBIE INT I-LDZ 15 RADAR	FARIS INT I-LDZ 10.6 RADAR	GREEP INT I-LDZ 7.6 RADAR	2500	3000	TOY
					IM	639	
					GS 3.00° TCH 54		
					2.7 NM	2.9 NM	4.4 NM
					3 NM	5.9 NM	999'

CATEGORY	A	B	C	D
S-ILS 12L	CAT II RA 112/12 100 DA 641			
S-ILS 12L	CAT III RVR 06			

## CATEGORY II & III ILS - SPECIAL AIRCREW & AIRCRAFT CERTIFICATION REQUIRED

HIRL all Rwys  
TDZ/CL Rwys 11, 12L, 12R, 29, and 30R

38°45'N-90°22'W

# ST LOUIS LAMBERT INTL (STL) ILS RWY 12L (CAT II & III)