

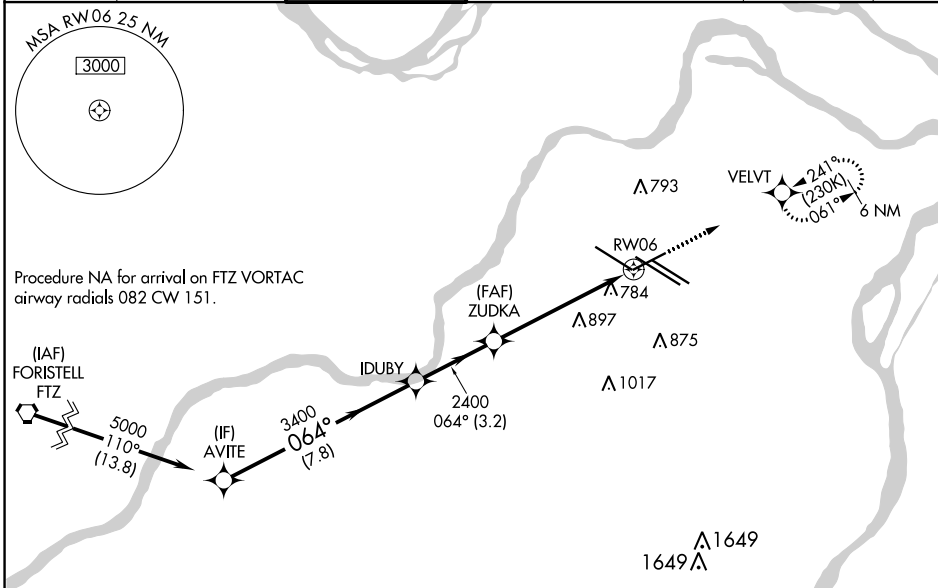
APP CRS	Rwy ldg	<b>7352</b>
<b>064°</b>	TDZE	<b>551</b>
	Apt Elev	<b>618</b>

# RNAV (GPS) RWY 6

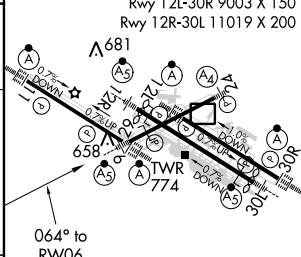
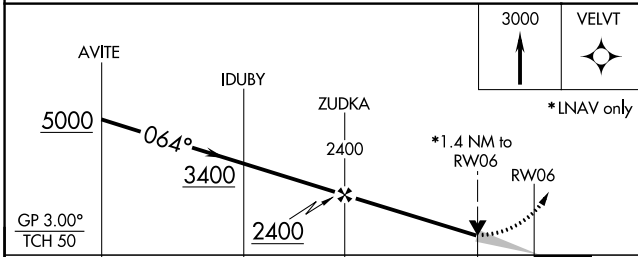
ST LOUIS LAMBERT INTL (STL)

RNP APCH.	MALSR	MISSED APPROACH: Climb to 3000 direct VELVT and hold, continue climb-in-hold to 3000.
▼ WAAS VNAV NA. For uncompensated Baro-VNAV systems, LNAV/VNAV NA below -18°C or above 54°C. For inop ALS increase LNAV/VNAV Cat E visibility to 1 1/2 SM and LNAV Cats C/D/E visibility to 1 3/8 SM.		

D-ATIS	ST. LOUIS APP CON	ST. LOUIS TOWER	GND CON	CLNC DEL	CPDLC
<b>125.025</b>	<b>132.125 360.6</b>	<b>132.475 239.275</b>	<b>121.9 348.6</b> (Inbound)	<b>119.5 363.1</b>	
<b>379.925</b>			<b>121.65 377.175</b> (Outbound)		
			<b>118.925 227.125</b> (Rwy 11/29)		



ELEV 618	<b>D</b> TDZE 551
----------	-------------------



CATEGORY	A	B	C	D	E
LNAV/VNAV	1103/60 552 (500-1 1/4)				
LNAV MDA	1040/24 489 (500-1/2)		1040/50 489 (500-1)		

HIRL all Rwys  
TDZ/CL Rwys 11, 12L, 12R, 29, and 30R

NC-3, 25 FEB 2021 to 25 MAR 2021

NC-3, 25 FEB 2021 to 25 MAR 2021