

APP CRS <b>303°</b>	Rwy Idg TDZE Apt Elev	<b>9001</b> <b>580</b> <b>618</b>
------------------------	-----------------------------	---

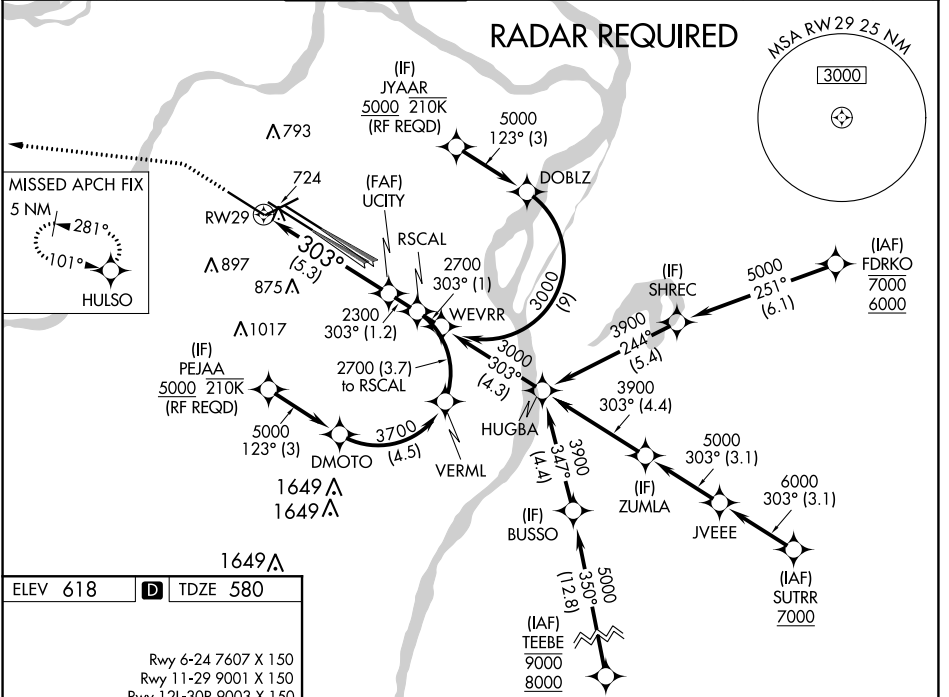
# RNAV (RNP) Z RWY 29

ST LOUIS LAMBERT INTL (STL)

▼ For uncompensated Baro-VNAV systems, procedure NA below -16°C (4°F) or above 54°C (130°F). Simultaneous approach authorized with Rwy 30L/R. Use of FD or AP providing RNAV track guidance required during simultaneous operations. GPS required. For inop ALS, increase RNP 0.12 all Cats visibility to RVR 6000, increase RNP 0.17 all Cats visibility to 1½, and increase RNP 0.30 all Cats visibility to 1¼.

ALSF-2  
 MISSED APPROACH: Climb to 1100 then climbing left turn to 3000 direct HULSO and hold.

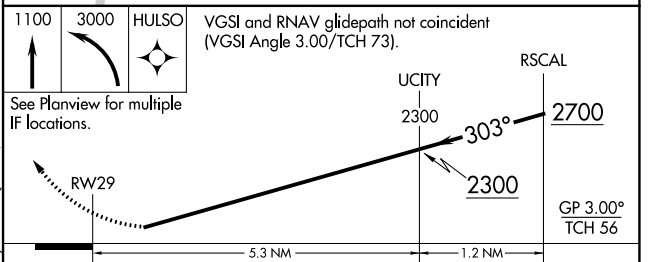
D-ATIS <b>125.025</b> <b>379.925</b>	ST. LOUIS APP CON <b>132.125 360.6</b>	ST. LOUIS TOWER <b>132.475 239.275</b>	GND CON <b>121.9 348.6</b> (Inbound) <b>121.65 377.175</b> (Outbound) <b>118.925 227.125</b> (Rwy 11/29)	CLNC DEL <b>119.5 363.1</b>	CPDLC
--	---	---	---	--------------------------------	-------



ELEV 618 **D** TDZE 580

Rwy 6-24 7607 X 150  
 Rwy 11-29 9001 X 150  
 Rwy 12L-30R 9003 X 150  
 Rwy 12R-30L 11019 X 200

HIRL all Rwy  
 TDZ/CL Rwy 11, 12L, 12R, 29, and 30R



CATEGORY	A	B	C	D
RNP 0.12 DA		963/50	383 (400-1)	
RNP 0.17 DA		1035/50	455 (500-1)	
RNP 0.30 DA		1088/60	508 (500-1¼)	

## AUTHORIZATION REQUIRED

NC-3, 25 FEB 2021 to 25 MAR 2021

NC-3, 25 FEB 2021 to 25 MAR 2021