


APP CRS Rwy Idg **10818**
 TDZE **583**
 Apt Elev **618**

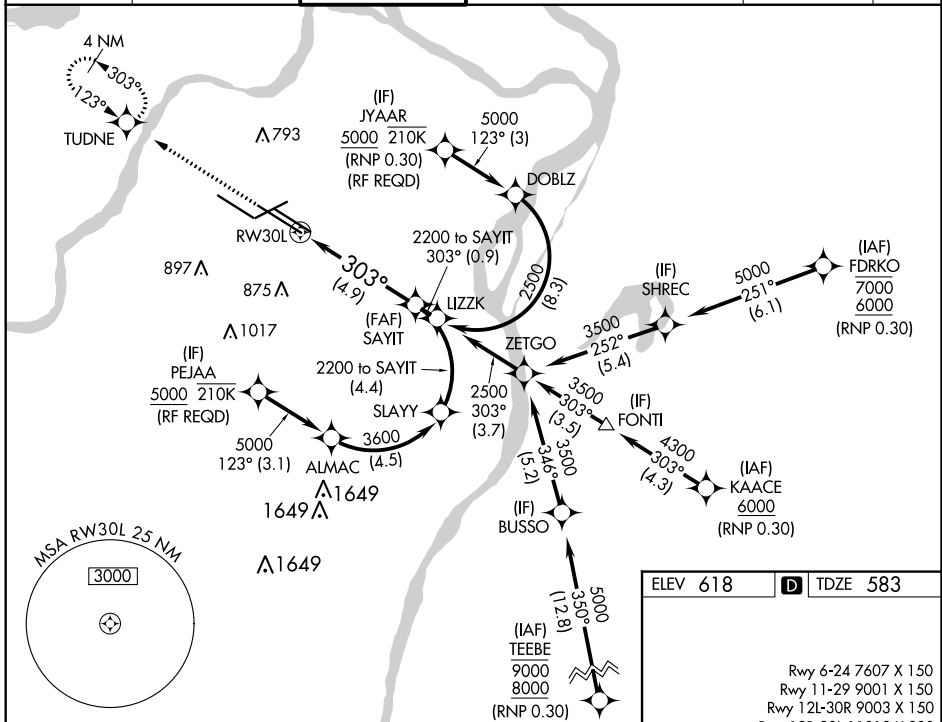
RNAV (RNP) Z RWY 30L

ST LOUIS LAMBERT INTL (STL)

RNP AR APCH.
 ▼ Use of FD or AP required during simultaneous operations. Simultaneous approach authorized with Rwy 29, except for arrivals at JYAAR and PEJAA. For uncompensated Baro-VNAV systems, procedure NA below -18°C or above 54°C. For inop ALS, increase RNP 0.15 all Cats visibility to RVR 5500 and RNP 0.30 all Cats visibility to RVR 6000.

MALSR

 MISSED APPROACH: Climb to 3000 direct TUDNE and hold, continue climb-in-hold to 3000.

D-ATIS 125.025 379.925	ST. LOUIS APP CON 132.125 360.6	ST. LOUIS TOWER 118.5 257.7	GND CON 121.9 348.6 (Inbound) 121.65 377.175 (Outbound) 118.925 227.125 (Rwy 11/29)	CLNC DEL 119.5 363.1	CPDLC
--	---	---------------------------------------	---	--------------------------------	-------

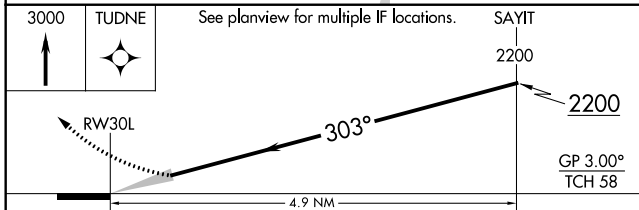


NC-3, 25 FEB 2021 to 25 MAR 2021

NC-3, 25 FEB 2021 to 25 MAR 2021

ELEV 618 **D** TDZE 583

Rwy 6-24 7607 X 150
 Rwy 11-29 9001 X 150
 Rwy 12L-30R 9003 X 150
 Rwy 12R-30L 11019 X 200



CATEGORY	A	B	C	D
RNP 0.15 DA		947/35	364 (400-5/6)	
RNP 0.30 DA		998/40	415 (400-3/4)	

AUTHORIZATION REQUIRED

