

WAAS CH 78121 W12B	APP CRS 123°	Rwy ldg 10552 TDZE 540 Apt Elev 618
--	------------------------	--

RNAV (GPS) Y RWY 12R

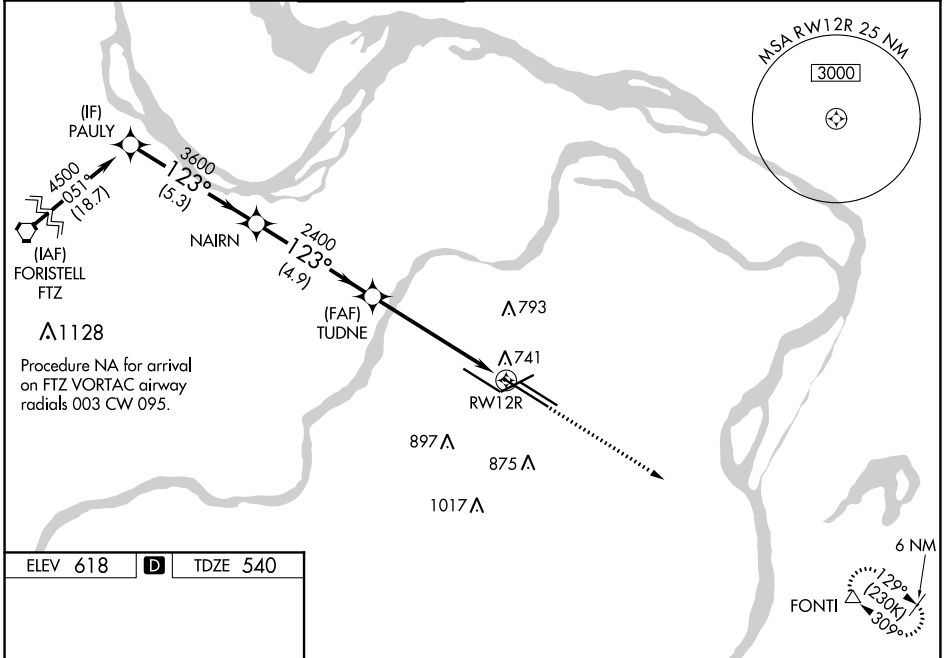
ST LOUIS LAMBERT INTL (STL)

V For uncompensated Baro-VNAV systems, LNAV/VNAV NA below -16°C (4°F) or above 54°C (130°F). DME/DME RNP-0.3 NA. For inop ALS, increase LPV Cat E visibility to RVR 4000, LNAV Cats A/B visibility to RVR 5000, and LNAV Cat E visibility to 1 1/2 SM. Inop table does not apply to LNAV/VNAV. Simultaneous approach authorized with Rwy 11. LNAV procedure NA during simultaneous operations. Use of FD or AP required during simultaneous operations.

MALSR

MISSED APPROACH:
Climb to 5000 direct FONTI and hold, continue climb-in-hold to 5000.

D-ATIS 125.025 379.925	ST. LOUIS APP CON 132.125 360.6	ST. LOUIS TOWER 118.5 257.7	GND CON 121.9 348.6 (Inbound) 121.65 377.175 (Outbound) 118.925 227.125 (Rwy 11/29)	CLNC DEL 119.5 363.1	CPDLC
--	---	---------------------------------------	---	--------------------------------	-------



NC-3, 25 FEB 2021 to 25 MAR 2021

NC-3, 25 FEB 2021 to 25 MAR 2021

ELEV 618	D	TDZE 540
----------	----------	----------

123° to RWY 12R

Rwy 6-24 7607 X 150
Rwy 11-29 9001 X 150
Rwy 12L-30R 9003 X 150
Rwy 12R-30L 11019 X 200

HIRL all Rwys
TDZ/CL Rwys 11, 12L, 12R, 29, and 30R

	PAULY	NAI RN	TUDNE	FONTI	
	4500		2400	5000	FONTI
	123°				
	3600				
	2400				
					* 1.3 NM to RWY 12R
					RWY 12R
	-5.3 NM		-4.9 NM	-4.4 NM	-1.3
CATEGORY	A	B	C	D	E
LPV DA	740/18		200 (200-1/2)		
LNAV/VNAV DA	1103-2		563 (500-2)		
LNAV MDA	1000/40		460 (400-3/4)		1000/50 460 (400-1)