

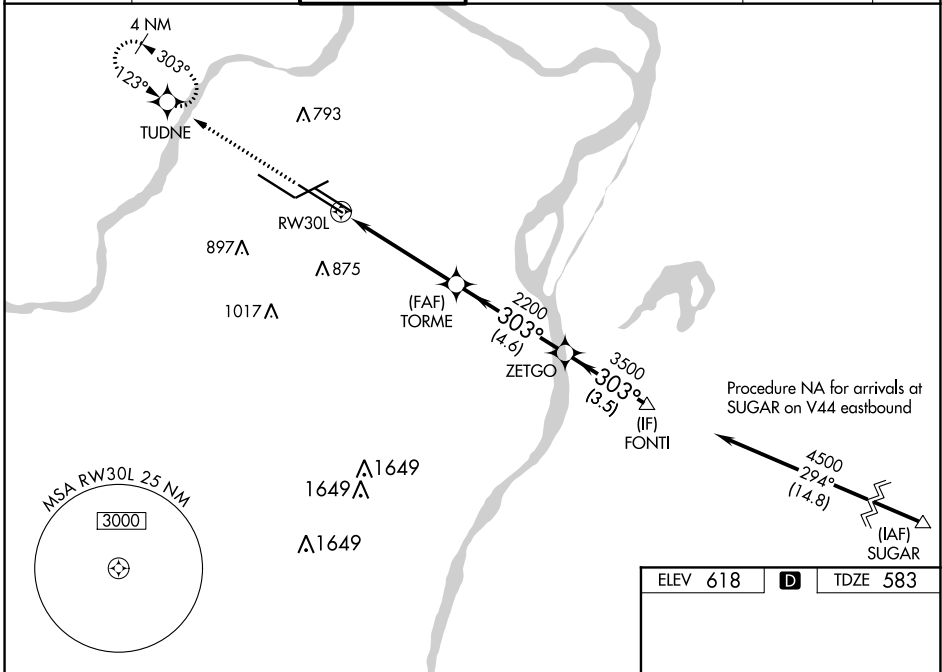
WAAS CH 99621 W30B	APP CRS 303°	Rwy Idg 10818 TDZE 583 Apt Elev 618
--	------------------------	--

RNAV (GPS) Y RWY 30L

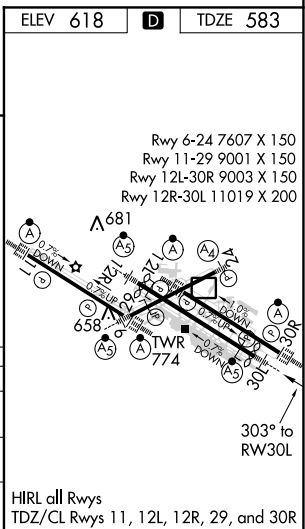
ST LOUIS LAMBERT INTL (STL)

RNP APCH.	MALSRL	MISSED APPROACH: Climb to 3000 direct TUDNE and hold, continue climb-in-hold to 3000.
<p>▼ LNAV procedure NA during simultaneous operations. Use of FD or AP required during simultaneous operations. Simultaneous approach authorized with Rwy 29. For uncompensated Baro-VNAV systems, LNAV/VNAV NA below -18°C or above 54°C. For inop ALS, increase LNAV Cat C/D visibility to 1½ SM. # RVR 1800 authorized with use of FD or AP or HUD to DA.</p>		

D-ATIS 125.025 379.925	ST. LOUIS APP CON 132.125 360.6	ST. LOUIS TOWER 118.5 257.7	GND CON 121.9 348.6 (Inbound) 121.65 377.175 (Outbound) 118.925 227.125 (Rwy 11/29)	CLNC DEL 119.5 363.1	CPDLC
--	---	---------------------------------------	---	--------------------------------	-------



3000	TUDNE	FONTI
*LNAV only	TORME	ZETGO
	2200	4500
	3500	2200
	GP 3.00°	TCH 58
	1.4 NM	3.5 NM
	4.6 NM	3.5 NM
CATEGORY	A	B
LPV DA#	783/24	200 (200-½)
LNAV/VNAV DA	974/35	391 (400-¾)
LNAV MDA	1100/24 517 (500-½)	1100/55 517 (500-1)



NC-3, 25 FEB 2021 to 25 MAR 2021

NC-3, 25 FEB 2021 to 25 MAR 2021